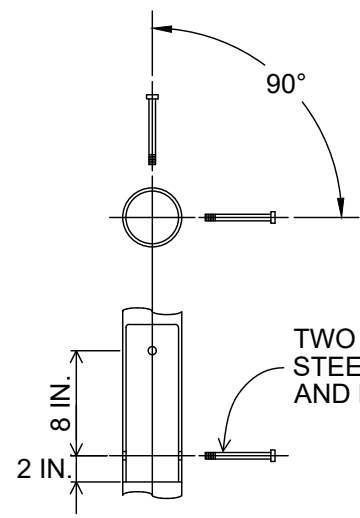
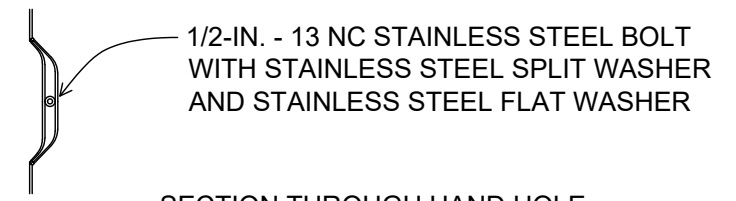


HAPCO RTA SERIES AND VALMONT RTA POLES MEET THIS STANDARD.



DAVIT ARM ATTACHMENT DETAIL



SECTION THROUGH HAND HOLE

NOTES

1. POLE ASSEMBLIES SHALL MEET ALL STRENGTH REQUIREMENTS OF THE CURRENT EDITION OF AASHTO FOR 115 MPH ISOTACH WHEN USED WITH A LUMINAIRE WEIGHING 60 POUNDS WITH E.P.A. 1.5 SQUARE FEET.
2. 4043 FILLER WIRE SHALL BE USED FOR WELDING.
3. ONLY THE BASE FLANGE WELDS ARE HEAT-TREATED.
4. BASE FLANGE SHALL ACCOMMODATE AND 11- TO 12-INCH BOLT CIRCLE.
5. SEE FOUNDATION DETAIL, SHEET 61 FOR ANCHOR BOLT INFORMATION.
6. THE CITY MAY ACCEPT OTHER BEND RADII AND DAVIT ARM MOUNTING ANGLES.
7. THE HAND HOLE SHALL BE ROTATED 90 DEGREES FROM THE DAVIT ARM.

(NOT TO SCALE)

100% DESIGN

CITY OF Federal Way
Centered on Opportunity
33325 8th Avenue South
Federal Way, WA 98003-6325
(253) 835-2700
www.cityoffederalway.com

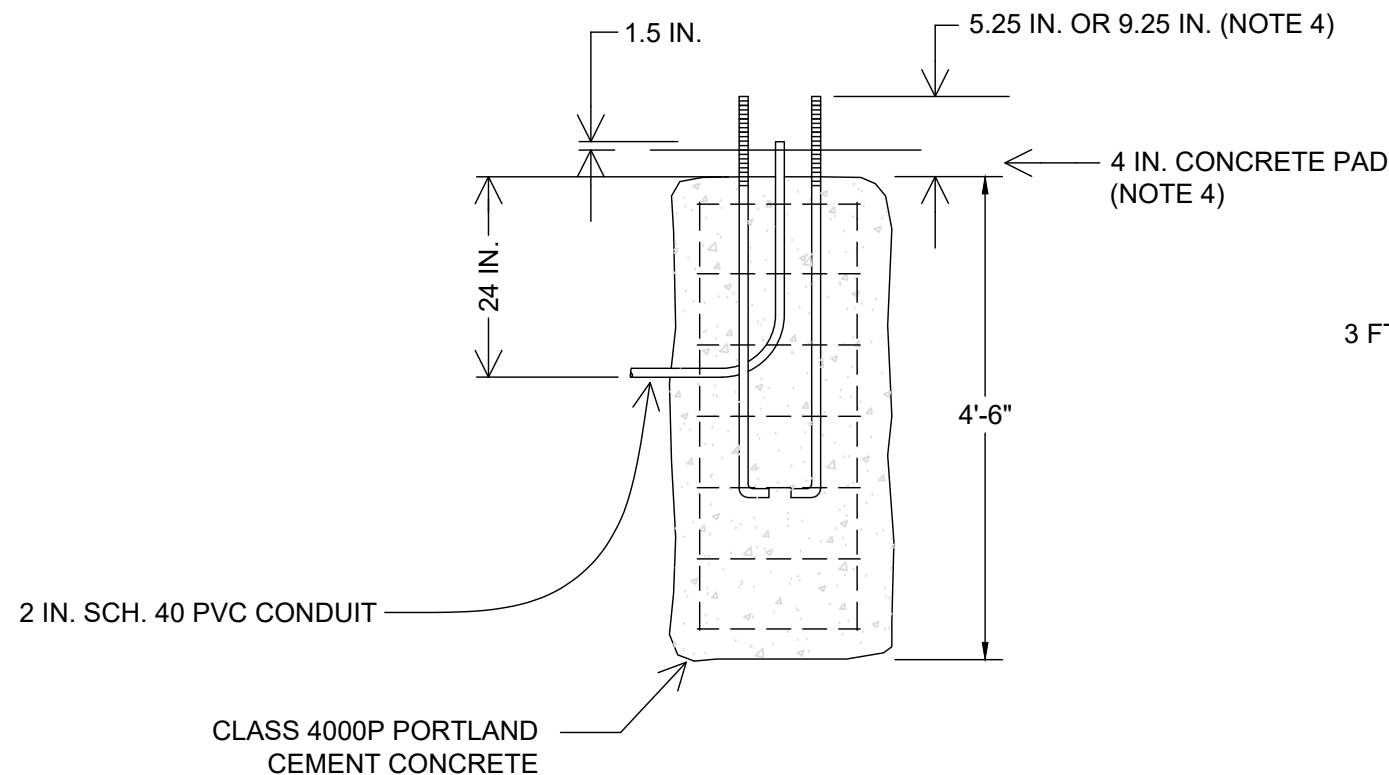
811
Know what's below.
Call 811 before you dig.

DRAFTED: D. MCINTOSH
DESIGNED: K. DAVIS, P.E.
REVIEWED: R. PEREZ, P.E.
APPROVED: R. PEREZ, P.E.

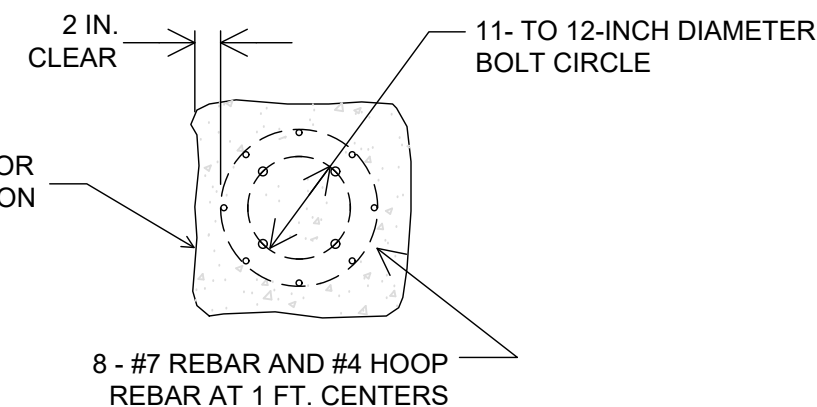
DRAWING VERSION / REVISION LOG		
NO.	DATE	REVISION

STREET LIGHT INFILL
ILLUMINATION SYSTEM DETAILS
LIGHT STANDARD

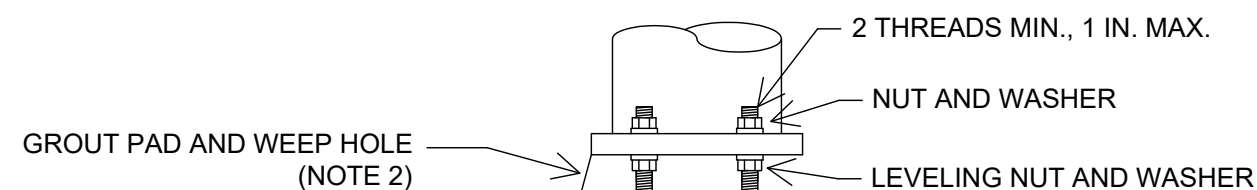
CITY PROJECT #:
26775
SHT. **60**
OF **76**



ELEVATION



PLAN



ANCHOR BOLT / NUT / WASHER CONFIGURATION

NOTES

1. ANCHOR BOLTS FOR ALUMINUM LIGHT STANDARDS:
 - SHALL MEET ASTM F1554 GRADE 55 AND BE HOT DIP GALVANIZED
 - SHALL BE 36 IN. IN LENGTH AND INCLUDE A 4-IN. RIGHT HOOK AT THE UNTHREADED END
 - THREAD SHALL BE 1-IN. 8NC FOR 12 IN.
 - EACH ANCHOR BOLT SHALL INCLUDE:
 - 2 HEAVY HEX NUTS IN ACCORDANCE WITH ASTM A563 GRADE A
 - 2 FLAT WASHERS IN ACCORDANCE WITH ASTM F436
2. A GROUT PAD SHALL BE INSTALLED BETWEEN THE TOP OF FOUNDATION AND THE LIGHT STANDARD BASE PLATE. A WEEP HOLE SHALL BE INSTALLED IN THE GROUT PAD ON THE DOWNHILL SIDE OF THE FOUNDATION.
3. ANCHOR BOLTS SHALL NOT BE LOCATED WITHIN THE SIDEWALK.
4. FOR ANY LOCATION WHERE A CONCRETE PAD (SHEET 63) IS NOT REQUIRED ON TOP OF THE FOUNDATION, THERE SHOULD BE 5.25 IN. OF ANCHOR BOLT EXPOSED AT TOP OF FOUNDATION. LOCATIONS WITH A CONCRETE PAD WILL REQUIRE 9.25 IN. OF ANCHOR BOLT EXPOSED AT TOP OF FOUNDATION.

(NOT TO SCALE)

100% DESIGN



DRAFTED: D. MCINTOSH
 DESIGNED: K. DAVIS, P.E.
 REVIEWED: R. PEREZ, P.E.
 APPROVED: R. PEREZ, P.E.

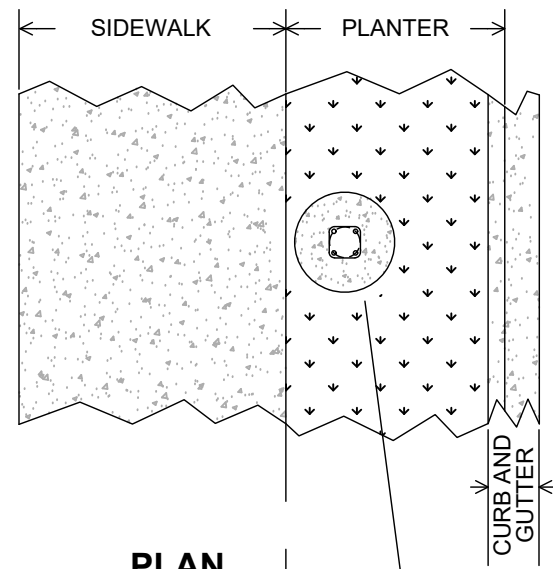


DRAWING VERSION / REVISION LOG		
NO.	DATE	REVISION

STREET LIGHT INFILL
ILLUMINATION SYSTEM DETAILS
LIGHT STANDARD FOUNDATION

CITY PROJECT #:
26775
 SH. 61
 OF 76

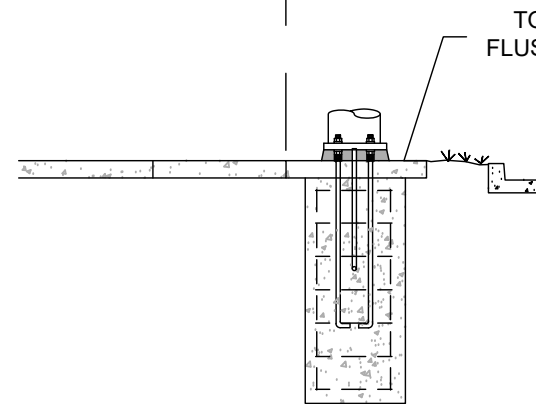
IN PLANTER STRIP



PLAN

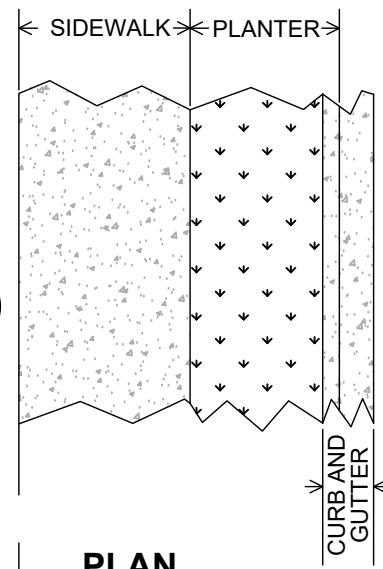
FRONT EDGE OF WALK

IN AREAS WITH SIDEWALK, PLACE FOUNDATION WHERE THERE IS A MINIMUM OF 6 FEET FROM CENTER OF POLE TO FACE OF CURB. DAMAGE TO SIDEWALK IS THE CONTRACTOR'S RESPONSIBILITY. CONCRETE PAD NOT SHOWN FOR CLARITY. SEE DETAILS, BELOW AND ON SHEET 61



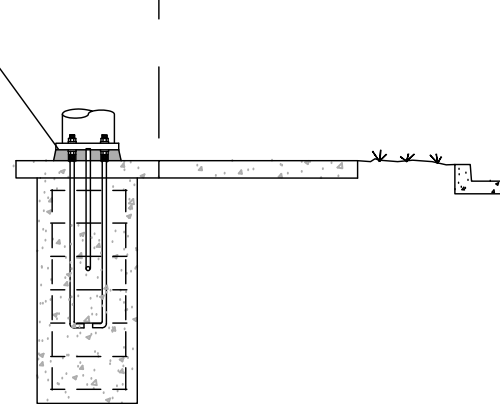
ELEVATION

BEHIND SIDEWALK



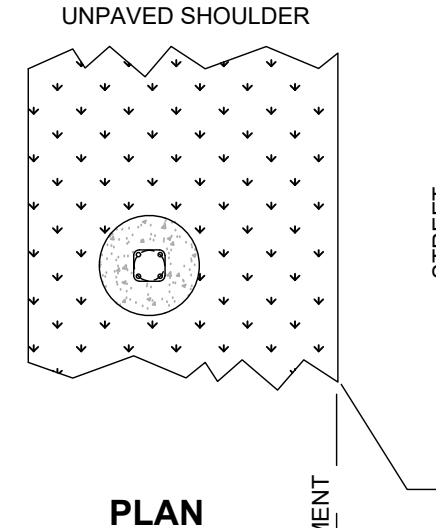
PLAN

BACK EDGE OF WALK



ELEVATION

AREAS WITHOUT SIDEWALK



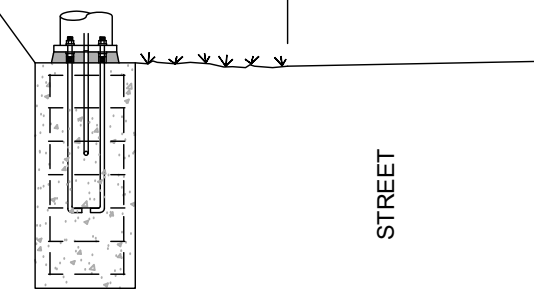
PLAN

EDGE LINE OR EDGE OF PAVEMENT

STREET

IN AREAS WITHOUT SIDEWALK, PLACE FOUNDATION WHERE THERE IS A MINIMUM OF 6 FEET FROM EDGE LINE STRIPING. IF NO EDGE LINE, USE A MINIMUM OF 6 FEET FROM EDGE OF STREET. DAMAGE TO PAVEMENT IS THE CONTRACTOR'S RESPONSIBILITY. CONCRETE PAD IS REQUIRED ONLY FOR THE JUNCTION BOX IN THESE AREAS AND IS NOT SHOWN FOR CLARITY. SEE DETAILS, BELOW AND ON SHEET 63

NO PAD REQUIRED FOR FOUNDATION - SEE SHEET 63 FOR JUNCTION BOX REQUIREMENTS



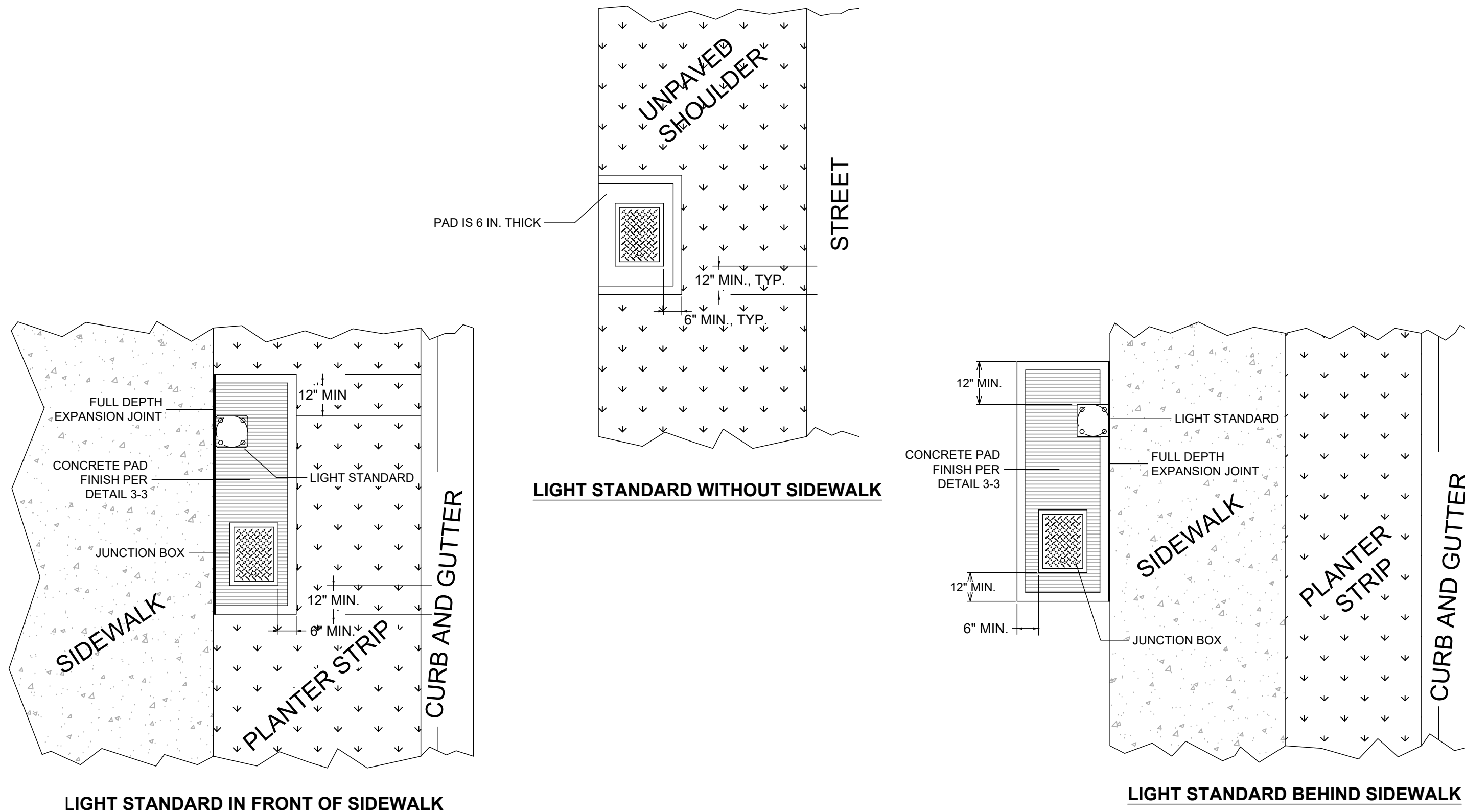
ELEVATION

STREET

(NOT TO SCALE)

100% DESIGN

DRAWING VERSION / REVISION LOG		
NO.	DATE	REVISION



(NOT TO SCALE)

100% DESIGN



33325 8th Avenue South
Federal Way, WA 98003-6325

(253) 835-2700
www.cityoffederalway.com



DRAFTED: D. MCINTOSH

DESIGNED: K. DAVIS, P.E.

REVIEWED: R. PEREZ, P.E.

APPROVED: R. PEREZ, P.E.



DRAWING VERSION / REVISION LOG

NO.	DATE	REVISION

STREET LIGHT INFILL

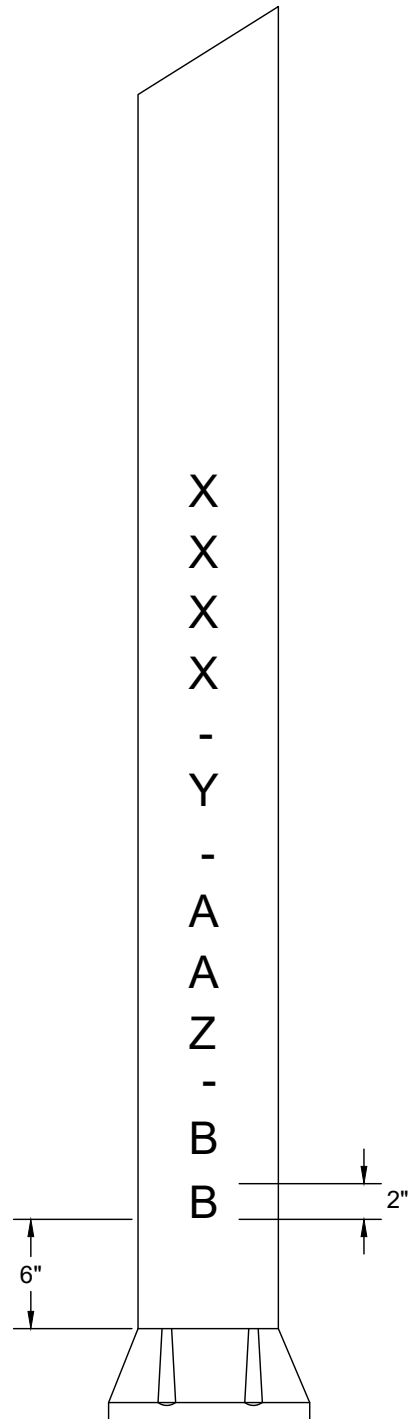
ILLUMINATION SYSTEM DETAILS
LIGHT STANDARD CONCRETE PAD

CITY PROJECT #:

26775

SHT. 63

OF 76



NOTES

ALL LIGHT STANDARDS AND SERVICE CABINETS INSTALLED BY THIS PROJECT SHALL BE MARKED/IDENTIFIED IN ACCORDANCE WITH THIS DETAIL.

XXXX = SERVICE CABINET LOCATION NUMBER BASED UPON A CITY-DEFINED COORDINATE SYSTEM - SEE PLANS

Y = THE SERVICE NUMBER, TYPICALLY 1 - SEE PLANS

AAZ = CIRCUIT NUMBER, TYPICALLY SL1, SL2, OR SL3 - SEE PLANS

BB = POLE NUMBER WITHIN CIRCUIT - SEE PLANS

LEADING ZEROS SHALL BE OMITTED.

PAINT SHALL BE BLACK ALKYD GLOSS CONFORMING TO FEDERAL SPECIFICATION TT-E-489.

FOR LIGHT STANDARDS:

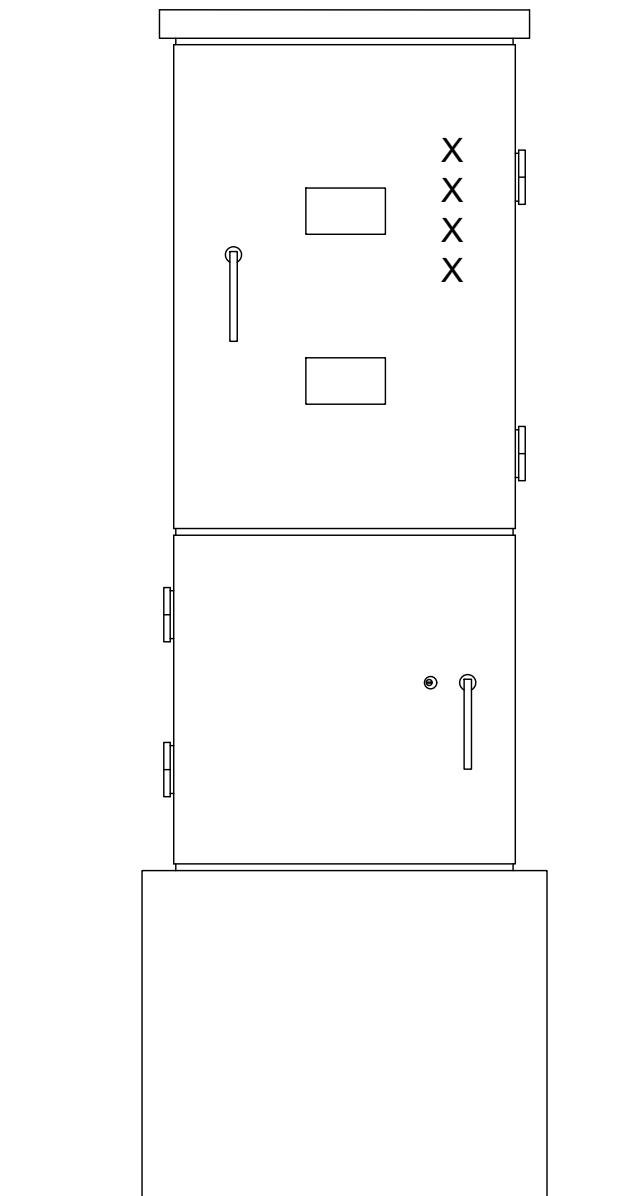
ALL NUMBERS/LETTERS SHALL BE 2 INCHES HIGH WITH 2-INCH VERTICAL SPACING.

ALL NUMBERS/LETTERS SHALL BE PAINTED ON THE POLE FACE NEAREST THE STREET.

FOR SERVICE CABINETS:

ALL NUMBERS SHALL BE 1-INCH HIGH WITH 0.5-INCH VERTICAL SPACING.

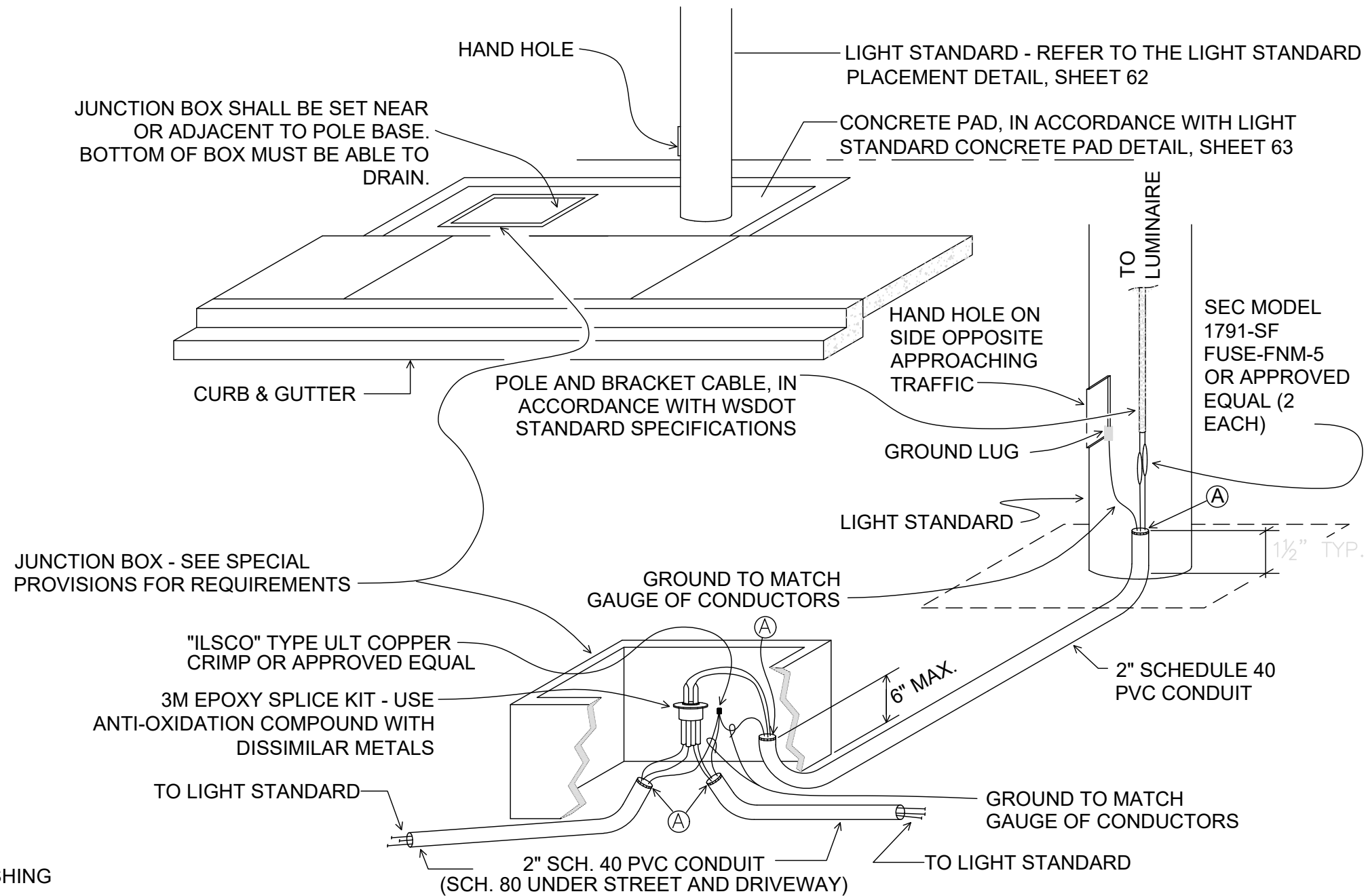
ALL NUMBERS SHALL BE PAINTED ON THE METER DOOR OF THE SERVICE CABINET.



(NOT TO SCALE)

100% DESIGN

DRAWING VERSION / REVISION LOG		
NO.	DATE	REVISION



Ⓐ = BELL END PVC BUSHING

NOTES

- 1) JUNCTION BOX LID TO BE WELDED SHUT AFTER FINAL INSPECTION WITH TWO 1-INCH LONG WELDS AT OPPOSITE CORNERS.
- 2) EXCEPT AS NOTED, ALL WIRING METHODS SHALL CONFORM TO THE NATIONAL ELECTRICAL CODE (NEC) AND APPLICABLE SECTIONS OF THE WSDOT STANDARD SPECIFICATIONS

(NOT TO SCALE)

100% DESIGN



33325 8th Avenue South
Federal Way, WA 98003-6325
(253) 835-2700
www.cityoffederalway.com



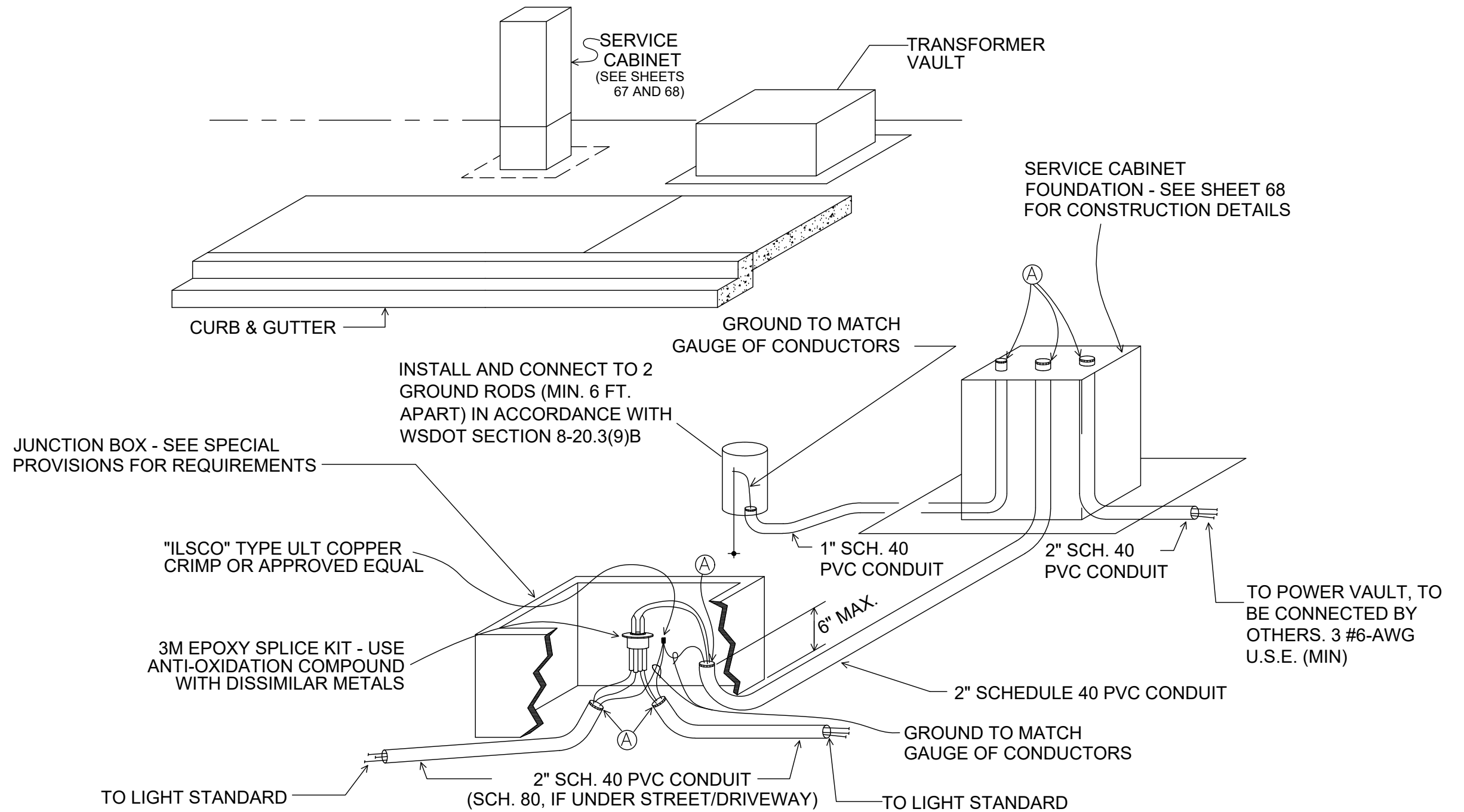
DRAFTED: D. MCINTOSH
DESIGNED: K. DAVIS, P.E.
REVIEWED: R. PEREZ, P.E.
APPROVED: R. PEREZ, P.E.



DRAWING VERSION / REVISION LOG		
NO.	DATE	REVISION

STREET LIGHT INFILL
ILLUMINATION SYSTEM DETAILS
LIGHT STANDARD WIRING

CITY PROJECT #:
26775
SHT. 65
OF 76



Ⓐ = BELL END PVC BUSHING

NOTES

- 1) JUNCTION BOX LID TO BE WELDED SHUT AFTER FINAL INSPECTION WITH TWO 1-INCH LONG WELDS AT OPPOSITE CORNERS.
- 2) EXCEPT AS NOTED, ALL WIRING METHODS SHALL CONFORM TO THE NATIONAL ELECTRICAL CODE (NEC) AND APPLICABLE SECTIONS OF THE WSDOT STANDARD SPECIFICATIONS

(NOT TO SCALE)

100% DESIGN



33325 8th Avenue South
Federal Way, WA 98003-6325
(253) 835-2700
www.cityoffederalway.com



DRAFTED: D. MCINTOSH
DESIGNED: K. DAVIS, P.E.
REVIEWED: R. PEREZ, P.E.
APPROVED: R. PEREZ, P.E.



DRAWING VERSION / REVISION LOG		
NO.	DATE	REVISION

**STREET LIGHT INFILL
ILLUMINATION SYSTEM DETAILS
SERVICE CABINET WIRING**

CITY PROJECT #:
26775
SHT. 66
OF 76

CONTRACTOR TO VERIFY REQUIREMENTS AND ACCEPTABILITY WITH SERVING UTILITY

COMPONENT SCHEDULE

METERBASE: 100 AMP, 4 JAW, B-LINE U264 BY-PASS TYPE, 5TH JAW AT 9:00 POSITION
THE CONTRACTOR SHALL VERIFY THE SERVING UTILITY'S REQUIREMENTS PRIOR TO FABRICATION AND INSTALLATION OF THE SERVICE EQUIPMENT.

PANELBOARD: 120/240 VAC, 100-AMP, 1-PHASE, 3-WIRE, COPPER BUS
EATON BAB BOLT-ON BREAKERS:

- 1-100/2 MAIN
- 3-15/2 ILLUMINATION BRANCH
- 1-50/1 SIGNAL BRANCH
- 1-20/1 GROUND FAULT RECEPTACLE BRANCH
- 1-15/1 CONTROL CKT BRANCH

CONTACTOR: LIGHTING RATED, 2-POLE, 120 VAC COIL, 3 REQUIRED (OR IN ACCORDANCE WITH THE PLAN REQUIREMENTS - WHICHEVER IS GREATER)

TERMINAL BLOCK, THREE-POINT FOR REMOTE PHOTOCELL

PHOTOCELL BYPASS SWITCH, SPST, 15 AMP, 277 VAC

GROUND FAULT RECEPTACLE, 120 VAC, DUPLEX, 20A

THE METER DOOR IS REMOVABLE AND SHALL BE HINGED ON THE RIGHT SIDE

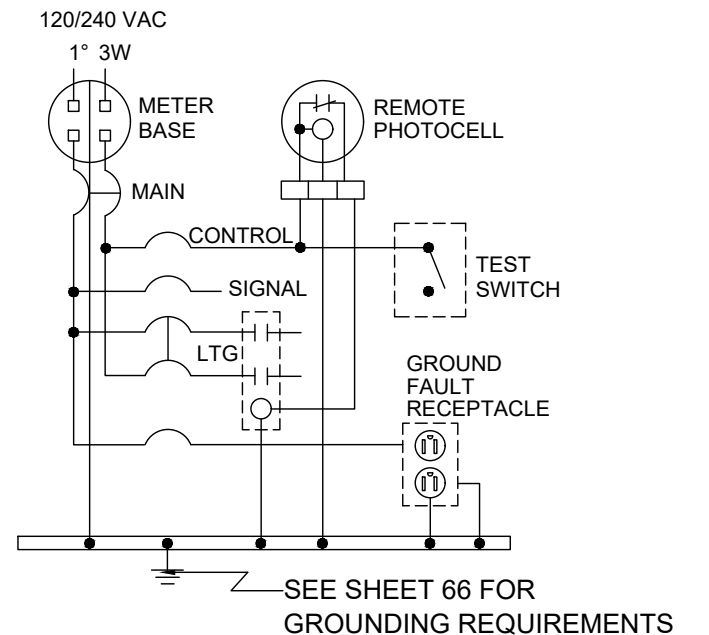
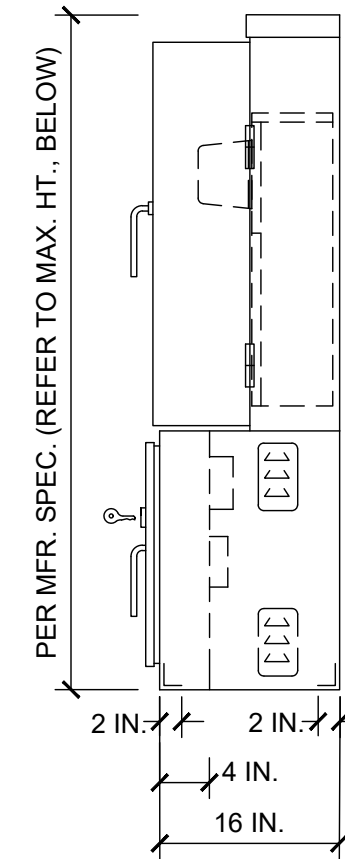
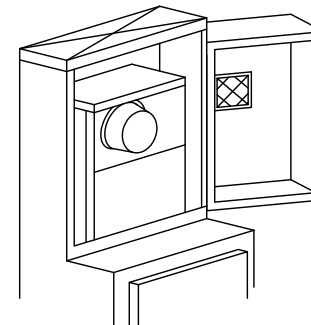
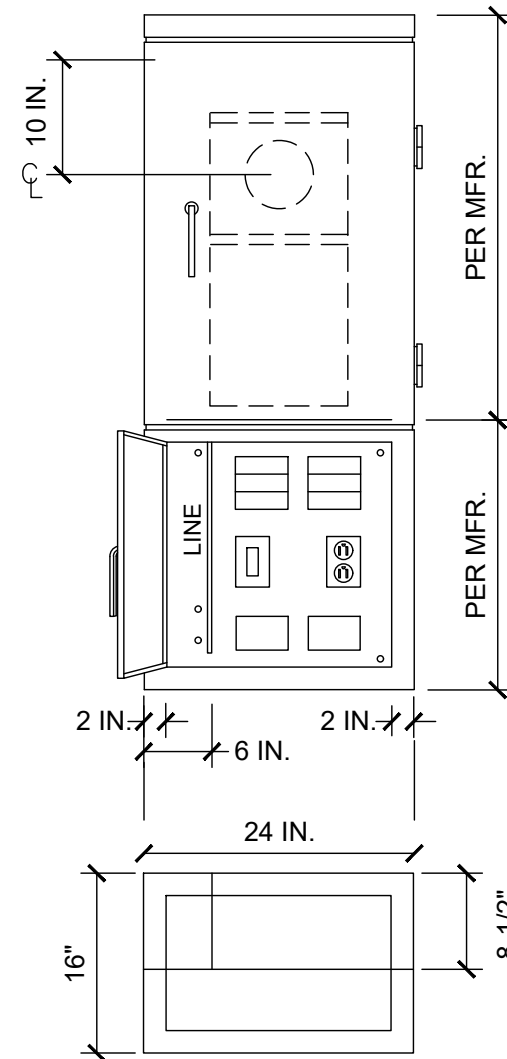
CABINET: NEMA 3R, PADMOUNT, 1/8TH INCH ALUMINUM CONSTRUCTION, TYPE 5052-H32
2 SCREENED AND GASKETED VENTS

DOORS: HEAVY DUTY WELDED HINGES (LIFT-OFF TYPE), OPENS TO THE RIGHT
STAINLESS STEEL VAULT HANDLES, PADLOCKABLE METER DOOR
POLISHED WIRE GLASS WINDOW IN METER DOOR
BEST CX LOCK (BLUE CORE) ON DISTRIBUTION DOOR, OPENS TO THE LEFT
CLOSED CELL NEOPRENE GASKET, CARD HOLDER

FINISH: BARE ALUMINUM (MILL FINISH) OUTSIDE, WHITE INSIDE

WIRED AND LABELED IN ACCORDANCE WITH UL STANDARD #508A, SUITABLE FOR USE AS A SERVICE ENTRANCE.

SHALL MEET EUSERC SPECIFICATIONS.



WIRING DIAGRAM

(NOT TO SCALE)

100% DESIGN



33325 8th Avenue South
Federal Way, WA 98003-6325
(253) 835-2700
www.cityoffederalway.com



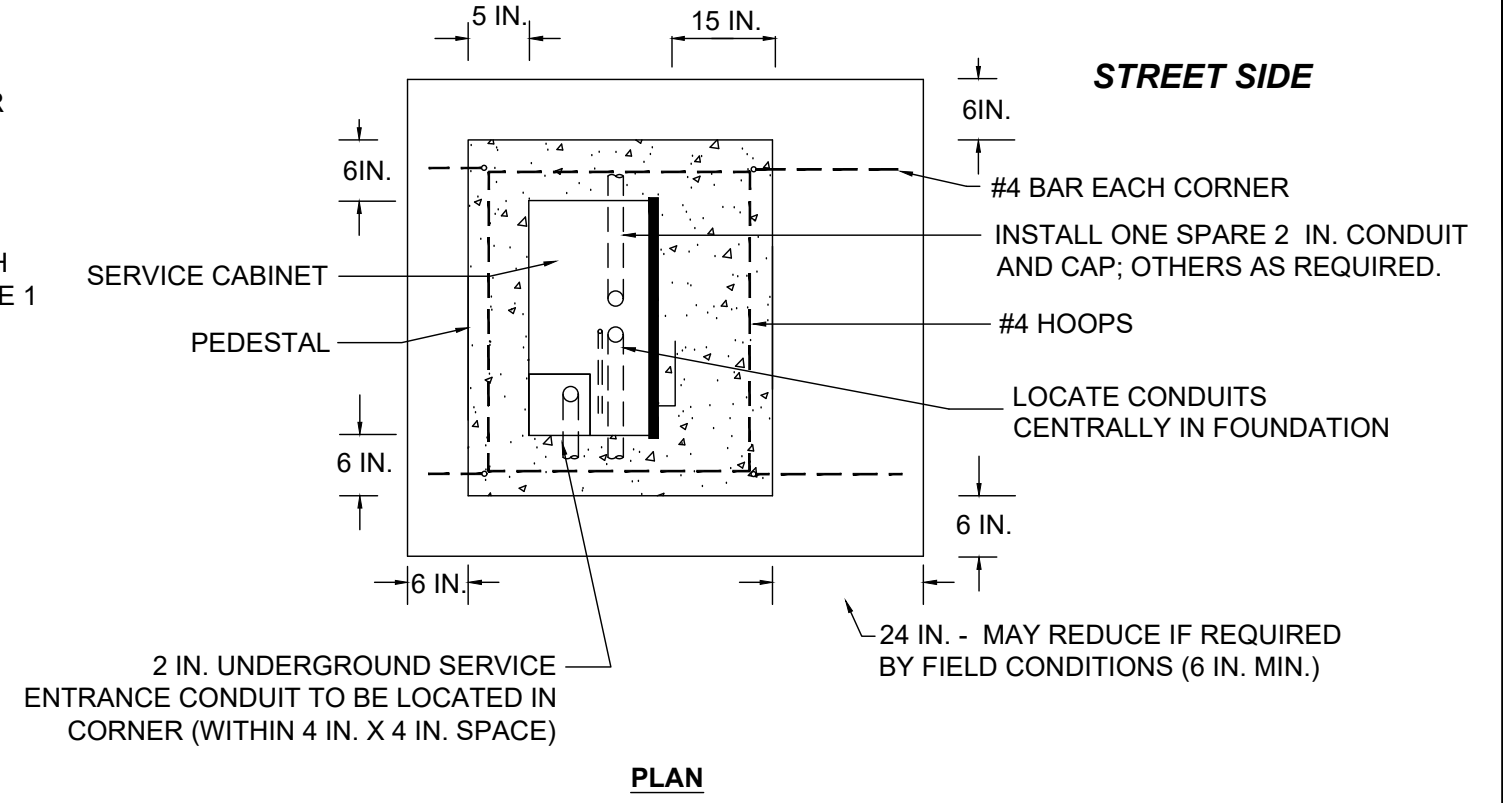
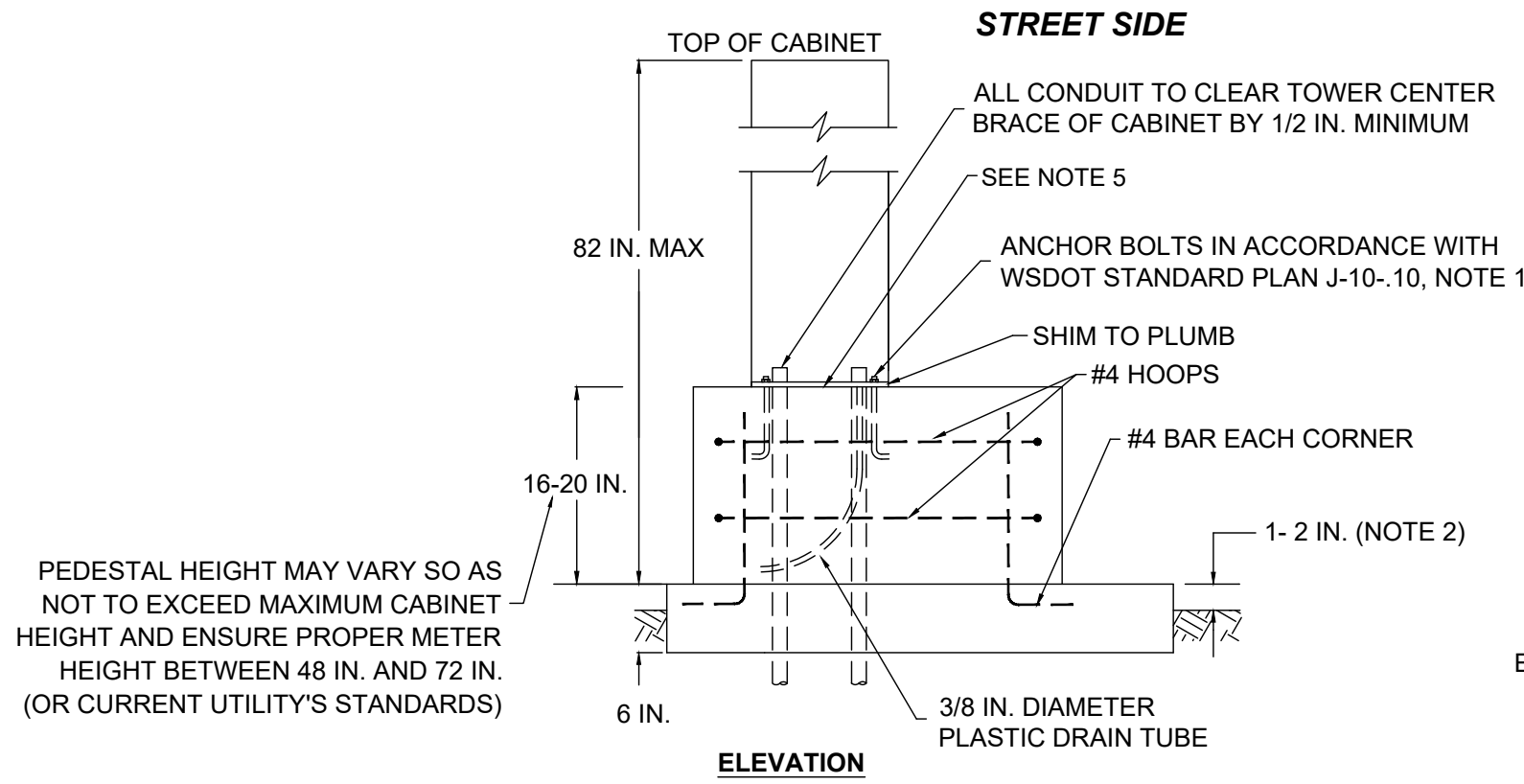
DRAFTED: D. MCINTOSH
DESIGNED: K. DAVIS, P.E.
REVIEWED: R. PEREZ, P.E.
APPROVED: R. PEREZ, P.E.



DRAWING VERSION / REVISION LOG		
NO.	DATE	REVISION

**STREET LIGHT INFILL
ILLUMINATION SYSTEM DETAILS
SERVICE CABINET**

CITY PROJECT #:
26775
SHT. 67
OF 76



SERVICE CABINET FOUNDATION DETAIL

NOTES

1. FOUNDATION SHALL BE CONSTRUCTED WITH CLASS 3000 CONCRETE UNLESS OTHERWISE NOTED IN THE PLANS.
2. WHERE FOUNDATION IS LOCATED IN OR ADJACENT TO SIDEWALK, TOP OF BASE PAD SHALL BE FLUSH WITH TOP OF SIDEWALK, AND OMIT CHAMFER WHERE PAD AND SIDEWALK MEET. FACE OF PEDESTAL SHALL BE A MINIMUM OF 6 INCHES FROM SIDEWALK.
3. FOUNDATION SHALL BE LOCATED A MINIMUM OF 6 FEET FROM THE NEAREST STREET EDGE LINE, EDGE OF PAVEMENT, OR FACE OF CURB. FOUNDATION AND CABINET SHALL BE LOCATED SUCH THAT THEY WILL NOT INTERFERE WITH SIGHT DISTANCE, SIGN VISIBILITY, OR USPS ACCESS.
4. FOUNDATION, INCLUDING PEDESTAL, IS TYPICAL. CONTRACTOR SHALL USE CABINET MANUFACTURER'S SPECIFICATIONS TO ASSURE PROPER FIT OF CABINET ON BASE WITH RESPECT TO CONDUIT PLACEMENT. CONTRACTOR SHALL SUBMIT FOR APPROVAL A PROPOSED DESIGN WITH PLAN, ELEVATION, AND RELEVANT SECTION VIEWS.
5. PLACE SILICONE SEAL BETWEEN THE CABINET AND CABINET FOUNDATION.
6. ORIENT FACE OF CABINET DOORS TOWARD THE STREET SIDE.
7. CONTRACTOR SHALL COORDINATE WITH POWER COMPANY REGARDING SERVICE CONNECTION.
8. CONTRACTOR SHALL OBTAIN AN ELECTRICAL PERMIT FROM THE CITY BUILDING DEPARTMENT.
9. WHEN SIGNAL CABINET, SERVICE CABINET, OR UPS/BBS AUXILIARY CABINET ARE INSTALLED NEXT TO EACH OTHER, REFER TO CITY OF FEDERAL WAY DRAWING NUMBER 3-45C FOR FOUNDATION DETAIL. METER DOOR MUST OPEN 180 DEGREES.
10. PUGET SOUND ENERGY OR OTHER FRANCHISE UTILITY POWER PROVIDER'S STANDARDS MAY CHANGE PERIODICALLY. IT IS THE CONTRACTOR'S RESPONSIBILITY TO ENSURE THE CABINET MEETS THOSE STANDARDS.

(NOT TO SCALE)

100% DESIGN

 Centered on Opportunity <small>33325 8th Avenue South Federal Way, WA 98003-6325</small> <small>(253) 835-2700 www.cityoffederalway.com</small>	 Know what's below. Call 811 before you dig.	<small>DRAFTED: D. MCINTOSH</small> <small>DESIGNED: K. DAVIS, P.E.</small> <small>REVIEWED: R. PEREZ, P.E.</small> <small>APPROVED: R. PEREZ, P.E.</small>	 <small>RICHARD A. PEREZ</small> <small>STATE OF WASHINGTON</small> <small>REGISTERED PROFESSIONAL ENGINEER</small> <small>12/12/2023</small>	<small>DRAWING VERSION / REVISION LOG</small> <table border="1" style="width: 100%; border-collapse: collapse;"> <thead> <tr> <th style="width: 5%;">NO.</th> <th style="width: 10%;">DATE</th> <th style="width: 85%;">REVISION</th> </tr> </thead> <tbody> <tr><td> </td><td> </td><td> </td></tr> <tr><td> </td><td> </td><td> </td></tr> <tr><td> </td><td> </td><td> </td></tr> <tr><td> </td><td> </td><td> </td></tr> </tbody> </table>	NO.	DATE	REVISION													<h2 style="margin: 0;">STREET LIGHT INFILL</h2> <h3 style="margin: 0;">ILLUMINATION SYSTEM DETAILS</h3> <h3 style="margin: 0;">SERVICE CABINET FOUNDATION</h3>	<small>CITY PROJECT #:</small> 26775 <small>SHT. OF</small> 68 76
				NO.	DATE	REVISION															
<p>*** PLAN CENTER COPY *** Official bid documents, plan holder's list, and addenda (if applicable) are available on BXWA.com</p>																					

MINIMUM LANE CLOSURE TAPER LENGTH = L (feet)										
LANE WIDTH (feet)	Posted Speed (mph)									
	25	30	35	40	45	50	55	60	65	70
10	105	150	205	270	450	500	550	-	-	-
11	115	165	225	295	495	550	605	660	-	-
12	125	180	245	320	540	600	660	720	780	840

MINIMUM SHOULDER TAPER LENGTH = L/3 (feet)										
SHOULDER WIDTH (feet)	Posted Speed (mph)									
	25	30	35	40	45	50	55	60	65	70
8'	40	40	60	90	120	130	150	160	170	190
10'	40	60	90	90	150	170	190	200	220	240

USE A MINIMUM 3 DEVICES TAPER FOR SHOULDER LESS THEN 8'.

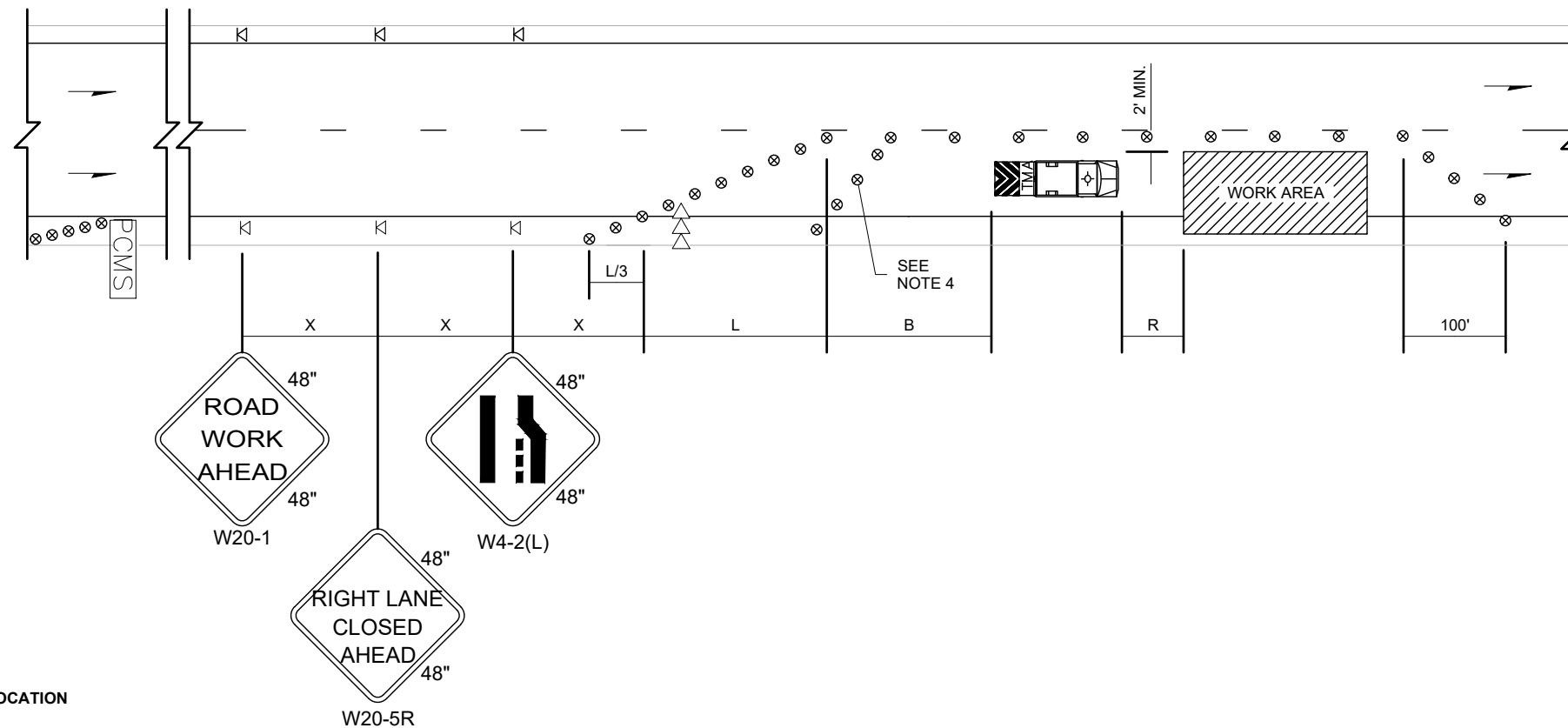
SIGN SPACING = X (1)		
FREEWAYS & EXPRESSWAYS	55 / 70 MPH	1500'
RURAL HIGHWAYS	60 / 65 MPH	800'
RURAL ROADS	45 / 55 MPH	500'
RURAL ROADS & URBAN ARTERIALS	35 / 40 MPH	350'
RURAL ROADS & URBAN ARTERIALS	25 / 30 MPH	200' (2)
RESIDENTIAL & BUSINESS DISTRICTS		
URBAN STREETS	25 MPH OR LESS	100' (2)

(1) ALL SPACING MAY BE ADJUSTED TO ACCOMMODATE INTERCHANGE RAMP, AT-GRADE INTERSECTIONS AND DRIVEWAYS.
(2) THIS SPACING MAY BE REDUCED IN URBAN AREAS TO FIT ROADWAY CONDITIONS.

CHANNELIZATION DEVICE SPACING (feet)		
MPH	TAPER	TANGENT
50/70	40	80
35/45	30	60
25/30	20	40

BUFFER DATA										
LONGITUDINAL BUFFER SPACE = B										
LENGTH (feet)	25	30	35	40	45	50	55	60	65	70
		155	200	250	305	360	425	495	570	645

BUFFER VEHICLE ROLL AHEAD DISTANCE = R	
TRANSPORTABLE ATTENUATOR	30 FEET MIN. TO 100 FEET MAX.
MINIMUM HOST VEHICLE WEIGHT 15,000 LBS. THE MAXIMUM WEIGHT SHALL BE IN ACCORDANCE WITH THE MANUFACTURERS RECOMMENDATION.	



PCMS	
1	2
RIGHT LANE CLOSURE	1 MILE AHEAD
2.0 SEC	2.0 SEC

FIELD LOCATE 1 MILE IN ADVANCE OF LANE CLOSURE SIGNING.

NOTES:

- SEE SPECIAL PROVISIONS FOR WORK HOUR RESTRICTIONS.
- EXTEND DEVICE TAPER AT L/3 ACROSS SHOULDER.
- DEVICES SHALL NOT ENCROACH INTO THE ADJACENT LANE.
- USE TRANSVERSE DEVICES IN CLOSED LANE EVERY 1000' (FT) (RECOMMENDED).
- DEVICE SPACING FOR THE DOWNSTREAM TAPER SHALL BE 20' (FT).
- ALL SIGNS ARE BLACK ON ORANGE.

LEGEND

- TEMPORARY SIGN LOCATION
- TRAFFIC SAFETY DRUM
- SEQUENTIAL ARROW SIGN
- TRANSPORTABLE ATTENUATOR
- PORTABLE CHANGEABLE MESSAGE SIGN

(NOT TO SCALE)

100% DESIGN



DRAFTED: D. MCINTOSH
DESIGNED: K. DAVIS, P.E.
REVIEWED: R. PEREZ, P.E.
APPROVED: R. PEREZ, P.E.



DRAWING VERSION / REVISION LOG		
NO.	DATE	REVISION

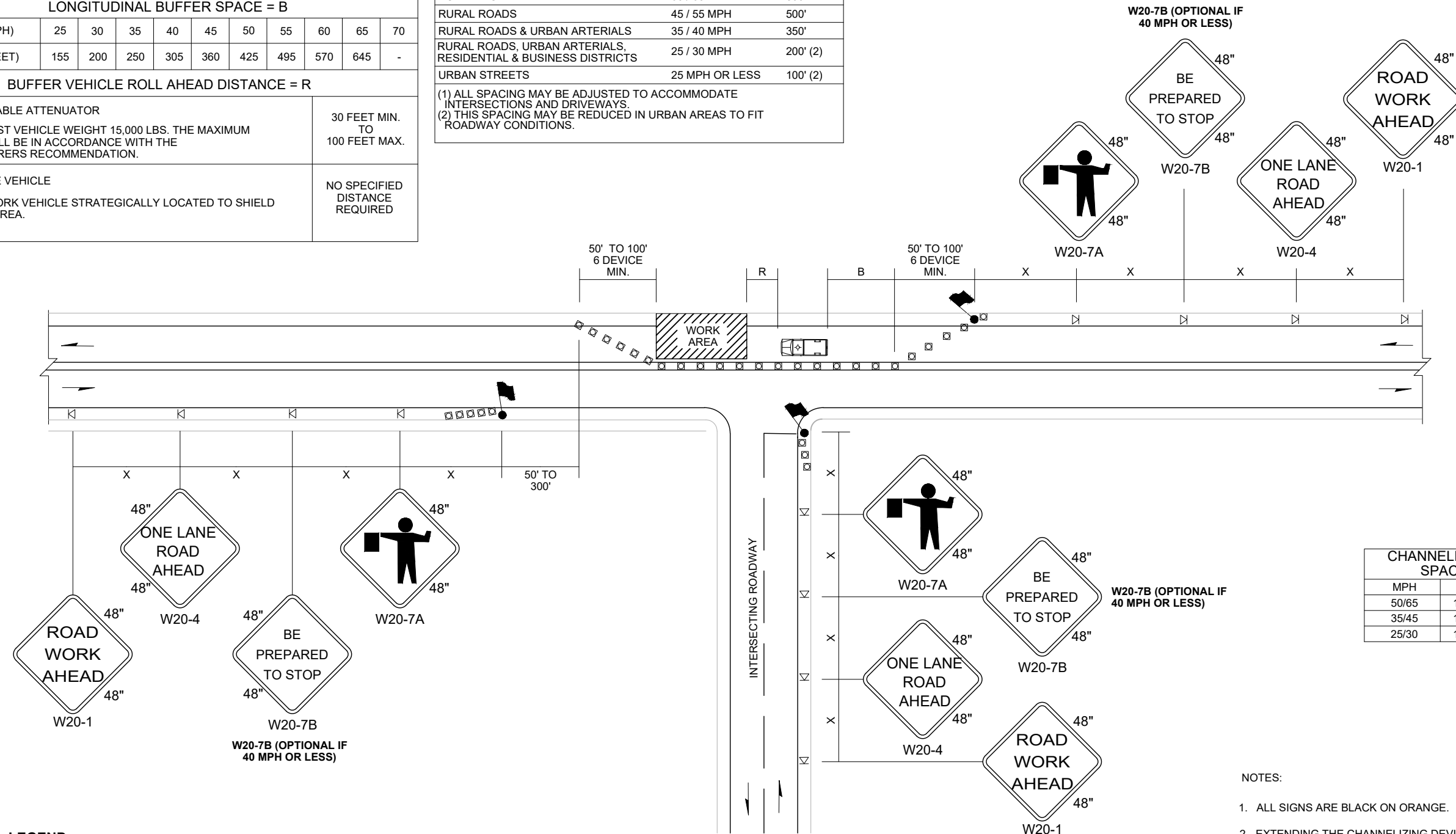
STREET LIGHT INFILL
TRAFFIC CONTROL PLANS
SINGLE-LANE CLOSURE FOR MULTI-LANE ROADWAYS

CITY PROJECT #: 26775
SHT. 69
OF 76

BUFFER DATA										
LONGITUDINAL BUFFER SPACE = B										
SPEED (MPH)	25	30	35	40	45	50	55	60	65	70
LENGTH (FEET)	155	200	250	305	360	425	495	570	645	-
BUFFER VEHICLE ROLL AHEAD DISTANCE = R										
TRANSPORTABLE ATTENUATOR MINIMUM HOST VEHICLE WEIGHT 15,000 LBS. THE MAXIMUM WEIGHT SHALL BE IN ACCORDANCE WITH THE MANUFACTURERS RECOMMENDATION.								30 FEET MIN. TO 100 FEET MAX.		
PROTECTIVE VEHICLE MAY BE A WORK VEHICLE STRATEGICALLY LOCATED TO SHIELD THE WORK AREA.								NO SPECIFIED DISTANCE REQUIRED		

SIGN SPACING = X (1)		
RURAL HIGHWAYS	60 / 65 MPH	800'
RURAL ROADS	45 / 55 MPH	500'
RURAL ROADS & URBAN ARTERIALS	35 / 40 MPH	350'
RURAL ROADS, URBAN ARTERIALS, RESIDENTIAL & BUSINESS DISTRICTS	25 / 30 MPH	200' (2)
URBAN STREETS	25 MPH OR LESS	100' (2)

(1) ALL SPACING MAY BE ADJUSTED TO ACCOMMODATE INTERSECTIONS AND DRIVEWAYS.
(2) THIS SPACING MAY BE REDUCED IN URBAN AREAS TO FIT ROADWAY CONDITIONS.



CHANNELIZATION DEVICE SPACING (FEET)		
MPH	TAPER	TANGENT
50/65	10 TO 20	80
35/45	10 TO 20	60
25/30	10 TO 20	40

- LEGEND**
- FLAGGING STATION
 - TEMPORARY SIGN LOCATION
 - CHANNELIZING DEVICES
 - PROTECTIVE VEHICLE

- NOTES:
- ALL SIGNS ARE BLACK ON ORANGE.
 - EXTENDING THE CHANNELIZING DEVICE TAPER ACROSS SHOULDER IS RECOMMENDED.
 - NIGHT WORK REQUIRES ADDITIONAL ROADWAY LIGHTING AT FLAGGING STATIONS. SEE THE STANDARD SPECIFICATIONS FOR ADDITIONAL DETAILS.
 - SEE SPECIAL PROVISIONS FOR WORK HOUR RESTRICTIONS.

(NOT TO SCALE)

100% DESIGN

DRAWING VERSION / REVISION LOG		
NO.	DATE	REVISION

SIGN SPACING = X (1)		
RURAL ROADS & URBAN ARTERIALS	35 / 40 MPH	350'
RURAL ROADS, URBAN ARTERIALS, RESIDENTIAL & BUSINESS DISTRICTS	25 / 30 MPH	200' (2)
URBAN STREETS	25 MPH OR LESS	100' (2)

(1) ALL SPACING MAY BE ADJUSTED TO ACCOMMODATE INTERSECTIONS AND DRIVEWAYS.
(2) THIS SPACING MAY BE REDUCED IN URBAN AREAS TO FIT ROADWAY CONDITIONS.

MINIMUM SHOULDER TAPER LENGTH = L/3 (feet)										
SHOULDER WIDTH (feet)	Posted Speed (mph)									
	25	30	35	40	45	50	55	60	65	70
8'	40	40	60	90	-	-	-	-	-	-
10'	40	60	90	90	-	-	-	-	-	-

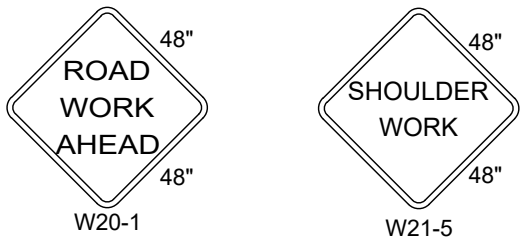
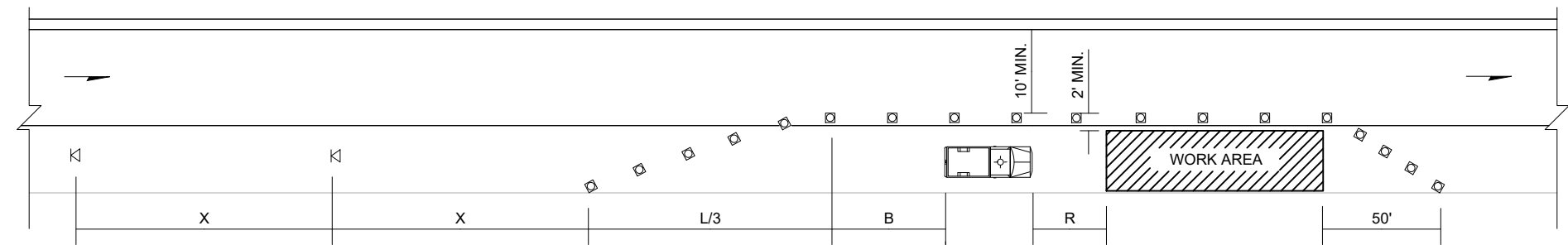
USE A 3 DEVICES TAPER FOR SHOULDERS LESS THEN 8'

CHANNELIZATION DEVICE SPACING (feet)		
MPH	TAPER	TANGENT
35/40	30	60
25/30	20	40

BUFFER DATA										
LONGITUDINAL BUFFER SPACE = B										
SPEED (MPH)	25	30	35	40	45	50	55	60	65	70
LENGTH (feet)	155	200	250	305						

BUFFER VEHICLE ROLL AHEAD DISTANCE = R

TRANSPORTABLE ATTENUATOR MINIMUM HOST VEHICLE WEIGHT 15,000 LBS. THE MAXIMUM WEIGHT SHALL BE IN ACCORDANCE WITH THE MANUFACTURERS RECOMMENDATION.	30 FEET MIN. TO 100 FEET MAX.
PROTECTIVE VEHICLE MAY BE A WORK VEHICLE STRATEGICALLY LOCATED TO SHIELD THE WORK AREA.	NO SPECIFIED DISTANCE REQUIRED



- LEGEND**
- ⊓ TEMPORARY SIGN LOCATION
 - CHANNELIZING DEVICES
 - 🚚 PROTECTIVE VEHICLE

40 MPH OR LESS

- NOTES:
1. DEVICE SPACING FOR THE DOWNSTREAM TAPER SHALL BE 20' (FT).
 2. ALL SIGNS ARE BLACK ON ORANGE.

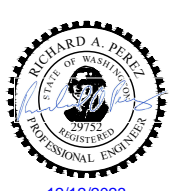
(NOT TO SCALE)

100% DESIGN

CITY OF Federal Way
Centered on Opportunity
33325 8th Avenue South
Federal Way, WA 98003-6325
(253) 835-2700
www.cityoffederalway.com

811
Know what's below.
Call 811 before you dig.

DRAFTED: D. MCINTOSH
DESIGNED: K. DAVIS, P.E.
REVIEWED: R. PEREZ, P.E.
APPROVED: R. PEREZ, P.E.



DRAWING VERSION / REVISION LOG		
NO.	DATE	REVISION

STREET LIGHT INFILL
TRAFFIC CONTROL PLANS
SHOULDER CLOSURE - LOW SPEED

CITY PROJECT #:
26775
SHT. 71
OF 76

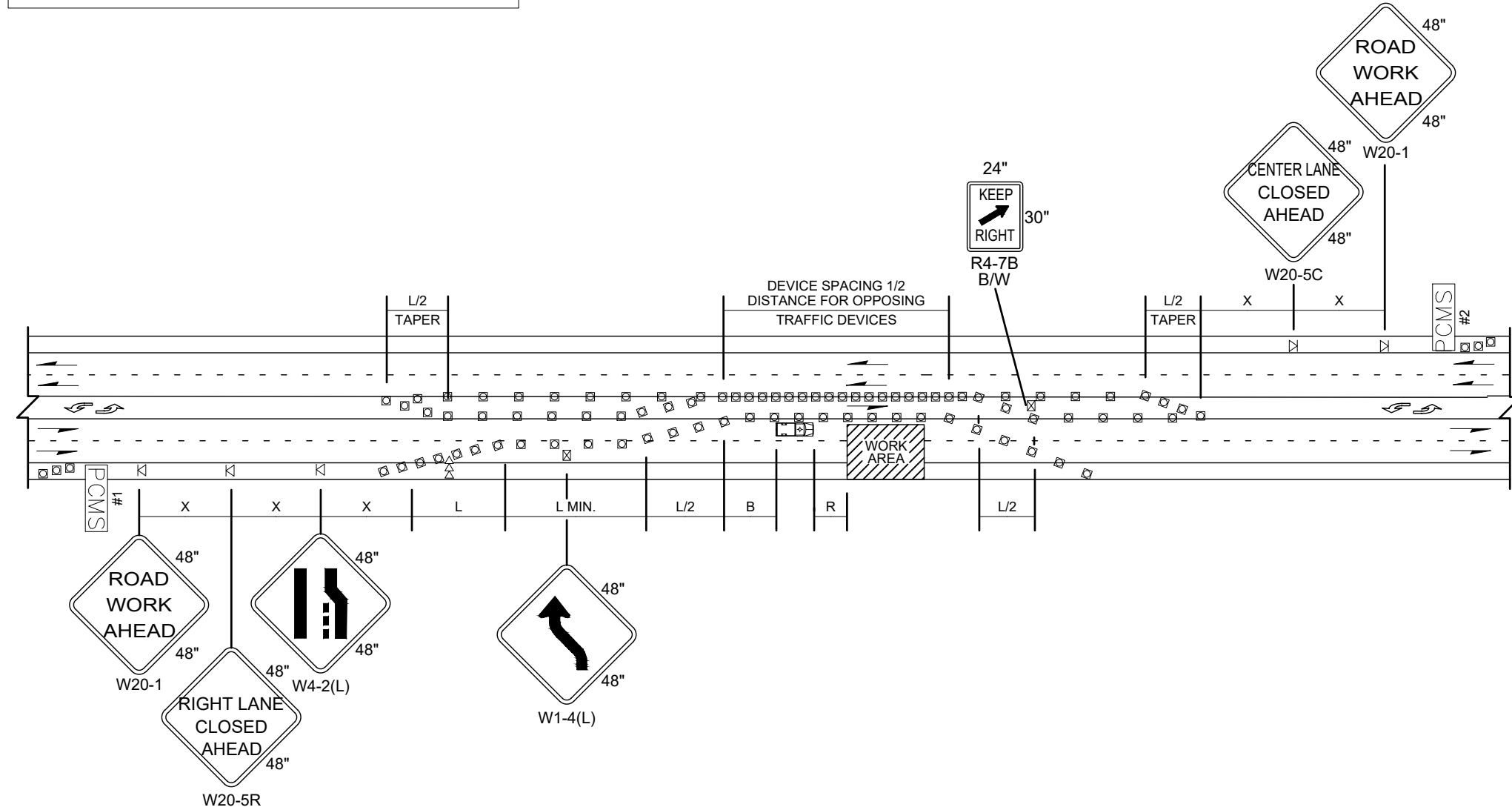
SIGN SPACING = X (1)		
RURAL ROADS	45 / 55 MPH	500'
RURAL ROADS & URBAN ARTERIALS	35 / 40 MPH	350'
RURAL ROADS & URBAN ARTERIALS	25 / 30 MPH	200' (2)
RESIDENTIAL & BUSINESS DISTRICTS		
URBAN STREETS	25 MPH OR LESS	100' (2)

(1) ALL SPACING MAY BE ADJUSTED TO ACCOMMODATE INTERCHANGE RAMP, AT-GRADE INTERSECTIONS AND DRIVEWAYS.
(2) THIS SPACING MAY BE REDUCED IN URBAN AREAS TO FIT ROADWAY CONDITIONS.

MINIMUM TAPER LENGTH = L (feet)											
LANE WIDTH (feet)	Posted Speed (mph)										
	25	30	35	40	45	50	55	60	65	70	
10	105	150	205	270	450	500	-	-	-	-	
11	115	165	225	295	495	550	-	-	-	-	
12	125	180	245	320	540	600	-	-	-	-	

CHANNELIZATION DEVICE SPACING (feet)		
MPH	TAPER	TANGENT
50	40	80
35/45	30	60
25/30	20	40

BUFFER DATA										
LONGITUDINAL BUFFER SPACE = B										
SPEED (MPH)	25	30	35	40	45	50	55	60	65	70
LENGTH (feet)	155	200	250	305	360	425	-	-	-	-
BUFFER VEHICLE ROLL AHEAD DISTANCE = R										
TRANSPORTABLE ATTENUATOR								30 FEET MIN. TO 100 FEET MAX.		
MINIMUM HOST VEHICLE WEIGHT 15,000 LBS. THE MAXIMUM WEIGHT SHALL BE IN ACCORDANCE WITH THE MANUFACTURERS RECOMMENDATION.										
PROTECTIVE VEHICLE								NO SPECIFIED DISTANCE REQUIRED		
MAY BE A WORK VEHICLE STRATEGICALLY LOCATED TO SHIELD THE WORK AREA.										



PCMS #1	
1	2
RIGHT LANE CLOSURE	1 MILE AHEAD
2.0 SEC	2.0 SEC

FIELD LOCATE IN ADVANCE OF TEMPORARY SIGNS.

PCMS #2	
1	2
CENTER LANE CLOSED	NNO LEFT TURNING
2.0 SEC	2.0 SEC

FIELD LOCATE IN ADVANCE OF TEMPORARY SIGNS.

NOTES:

- SEE SPECIAL PROVISIONS FOR WORK HOUR RESTRICTIONS.
- RECOMMEND EXTENDING DEVICE TAPER (L/3) ACROSS SHOULDER.
- FOR POSTED SPEED LIMITS OF 30 MPH OR LESS, USE SIGN W1-3 IN LIEU OF SIGN W1-4.
- ALL SIGNS ARE BLACK ON ORANGE UNLESS OTHERWISE DESIGNATED.

(NOT TO SCALE)

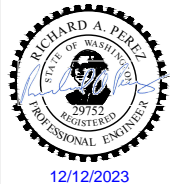
100% DESIGN



33325 8th Avenue South
Federal Way, WA 98003-6325
(253) 835-2700
www.cityoffederalway.com



DRAFTED: D. MCINTOSH
DESIGNED: K. DAVIS, P.E.
REVIEWED: R. PEREZ, P.E.
APPROVED: R. PEREZ, P.E.



DRAWING VERSION / REVISION LOG		
NO.	DATE	REVISION

STREET LIGHT INFILL
TRAFFIC CONTROL PLANS
RIGHT LANE CLOSURE WITH SHIFT - FIVE-LANE ROADWAY

CITY PROJECT #:
26775
SHT. **72**
OF **76**

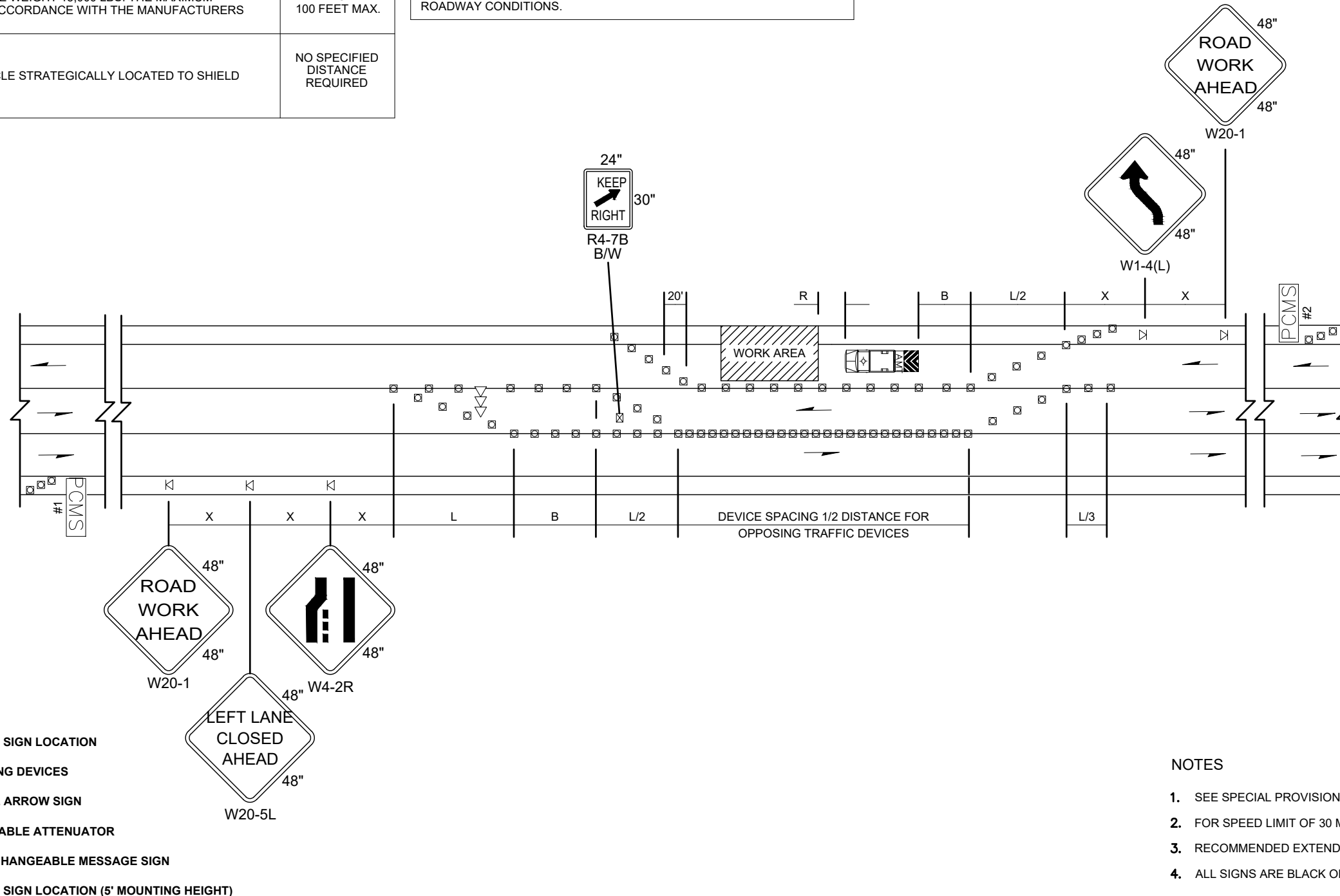
BUFFER DATA										
LONGITUDINAL BUFFER SPACE = B										
SPEED (MPH)	25	30	35	40	45	50	55	60	65	70
LENGTH (feet)	155	200	250	305	360	425	495	570	645	-
BUFFER VEHICLE ROLL AHEAD DISTANCE = R										
TRANSPORTABLE ATTENUATOR MINIMUM HOST VEHICLE WEIGHT 15,000 LBS. THE MAXIMUM WEIGHT SHALL BE IN ACCORDANCE WITH THE MANUFACTURERS RECOMMENDATION.										30 FEET MIN. TO 100 FEET MAX.
PROTECTIVE VEHICLE MAY BE A WORK VEHICLE STRATEGICALLY LOCATED TO SHIELD THE WORK AREA.										NO SPECIFIED DISTANCE REQUIRED

SIGN SPACING = X (1)		
RURAL HIGHWAYS	60 / 65 MPH	800'
RURAL ROADS	45 / 55 MPH	500'
RURAL ROADS & URBAN ARTERIALS	35 / 40 MPH	350'
RURAL ROADS & URBAN ARTERIALS	25 / 30 MPH	200' (2)
RESIDENTIAL & BUSINESS DISTRICTS		
URBAN STREETS	25 MPH OR LESS	100' (2)

(1) ALL SPACING MAY BE ADJUSTED TO ACCOMMODATE INTERCHANGE RAMP, AT-GRADE INTERSECTIONS AND DRIVEWAYS.
(2) THIS SPACING MAY BE REDUCED IN URBAN AREAS TO FIT ROADWAY CONDITIONS.

MINIMUM TAPER LENGTH = L (feet)										
LANE WIDTH (feet)	Posted Speed (mph)									
	25	30	35	40	45	50	55	60	65	70
10	105	150	205	270	450	500	550	-	-	-
11	115	165	225	295	495	550	605	660	-	-
12	125	180	245	320	540	600	660	720	780	-

CHANNELIZATION DEVICE SPACING (feet)		
MPH	TAPER	TANGENT
50/60	40	80
35/45	30	60
25/30	20	40



PCMS #1	
1	2
LEFT LANE CLOSURE	1 MILE AHEAD
2.0 SEC	2.0 SEC

FIELD LOCATE IN ADVANCE OF TEMPORARY SIGNS.

PCMS #2	
1	2
LANE SHIFTS LEFT	1 MILE AHEAD
2.0 SEC	2.0 SEC

FIELD LOCATE IN ADVANCE OF TEMPORARY SIGNS.

(NOT TO SCALE)

100% DESIGN

DRAWING VERSION / REVISION LOG		
NO.	DATE	REVISION

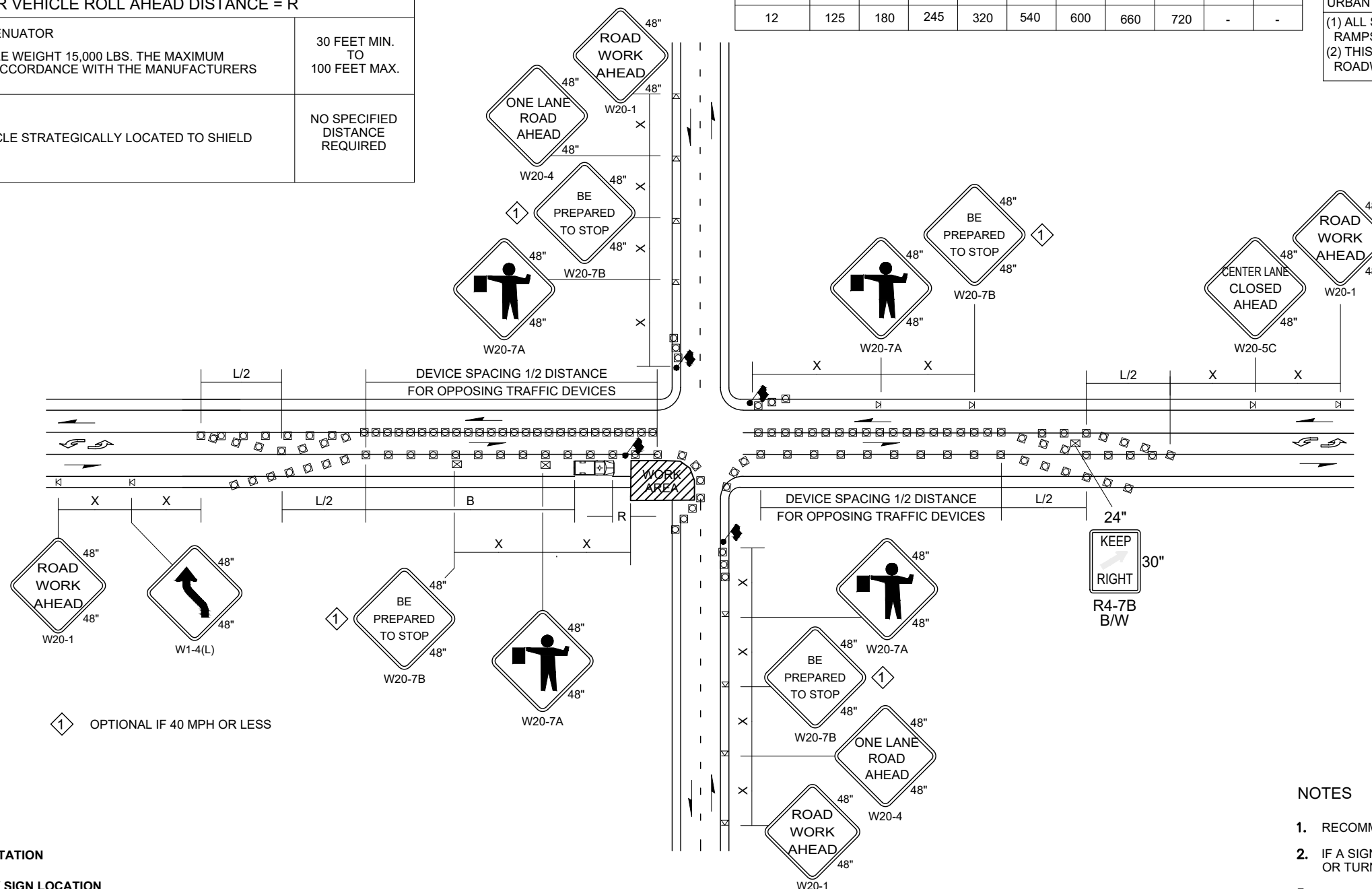
BUFFER DATA										
LONGITUDINAL BUFFER SPACE = B										
SPEED (MPH)	25	30	35	40	45	50	55	60	65	70
LENGTH (feet)	155	200	250	305	360	425	495	570	645	-
BUFFER VEHICLE ROLL AHEAD DISTANCE = R										
TRANSPORTABLE ATTENUATOR MINIMUM HOST VEHICLE WEIGHT 15,000 LBS. THE MAXIMUM WEIGHT SHALL BE IN ACCORDANCE WITH THE MANUFACTURERS RECOMMENDATION.										30 FEET MIN. TO 100 FEET MAX.
PROTECTIVE VEHICLE MAY BE A WORK VEHICLE STRATEGICALLY LOCATED TO SHIELD THE WORK AREA.										NO SPECIFIED DISTANCE REQUIRED

MINIMUM TAPER LENGTH = L (feet)										
LANE WIDTH (feet)	Posted Speed (mph)									
	25	30	35	40	45	50	55	60	65	70
10	105	150	205	270	450	500	550	-	-	-
11	115	165	225	295	495	550	605	660	-	-
12	125	180	245	320	540	600	660	720	-	-

SIGN SPACING = X (1)		
RURAL HIGHWAYS	60 / 65 MPH	800'
RURAL ROADS	45 / 55 MPH	500'
RURAL ROADS & URBAN ARTERIALS	35 / 40 MPH	350'
RURAL ROADS & URBAN ARTERIALS	25 / 30 MPH	200' (2)
RESIDENTIAL & BUSINESS DISTRICTS		
URBAN STREETS	25 MPH OR LESS	100' (2)

(1) ALL SPACING MAY BE ADJUSTED TO ACCOMMODATE INTERCHANGE RAMP, AT-GRADE INTERSECTIONS AND DRIVEWAYS.
(2) THIS SPACING MAY BE REDUCED IN URBAN AREAS TO FIT ROADWAY CONDITIONS.

CHANNELIZATION DEVICE SPACING (feet)		
MPH	TAPER	TANGENT
50/70	40	80
35/45	30	60
25/30	20	40



1 OPTIONAL IF 40 MPH OR LESS

- LEGEND**
- FLAGGING STATION
 - TEMPORARY SIGN LOCATION
 - CHANNELIZING DEVICES
 - PROTECTIVE VEHICLE - RECOMMENDED
 - TEMPORARY SIGN LOCATION (5' MOUNTING HEIGHT)

- NOTES**
1. RECOMMEND EXTENDING DEVICE TAPER (L/3) ACROSS SHOULDER.
 2. IF A SIGNAL IS PRESENT, IT SHALL BE SET TO "RED FLASH MODE" OR TURNED OFF DURING FLAGGING OPERATIONS.
 3. FOR SPEED LIMIT OF 30 MPH OR LESS USE SIGN W1-3 IN LIEU OF SIGN W1-4.
 4. MAINTAIN A MINIMUM OF ONE ACCESS POINT FOR EACH BUSINESS WITHIN WORK AREA LIMITS.
 5. ALL SIGNS ARE BLACK ON ORANGE UNLESS OTHERWISE DESIGNATED.

(NOT TO SCALE)

100% DESIGN

CITY OF Federal Way
Centered on Opportunity

33325 8th Avenue South
Federal Way, WA 98003-6325

(253) 835-2700
www.cityoffederalway.com

811
Know what's below.
Call 811 before you dig.

DRAFTED: D. MCINTOSH
DESIGNED: K. DAVIS, P.E.
REVIEWED: R. PEREZ, P.E.
APPROVED: R. PEREZ, P.E.

RICHARD A. PEREZ
REGISTERED PROFESSIONAL ENGINEER
12/12/2023

DRAWING VERSION / REVISION LOG		
NO.	DATE	REVISION

STREET LIGHT INFILL

TRAFFIC CONTROL PLANS

INTERSECTION LANE CLOSURE - THREE-LANE ROADWAY

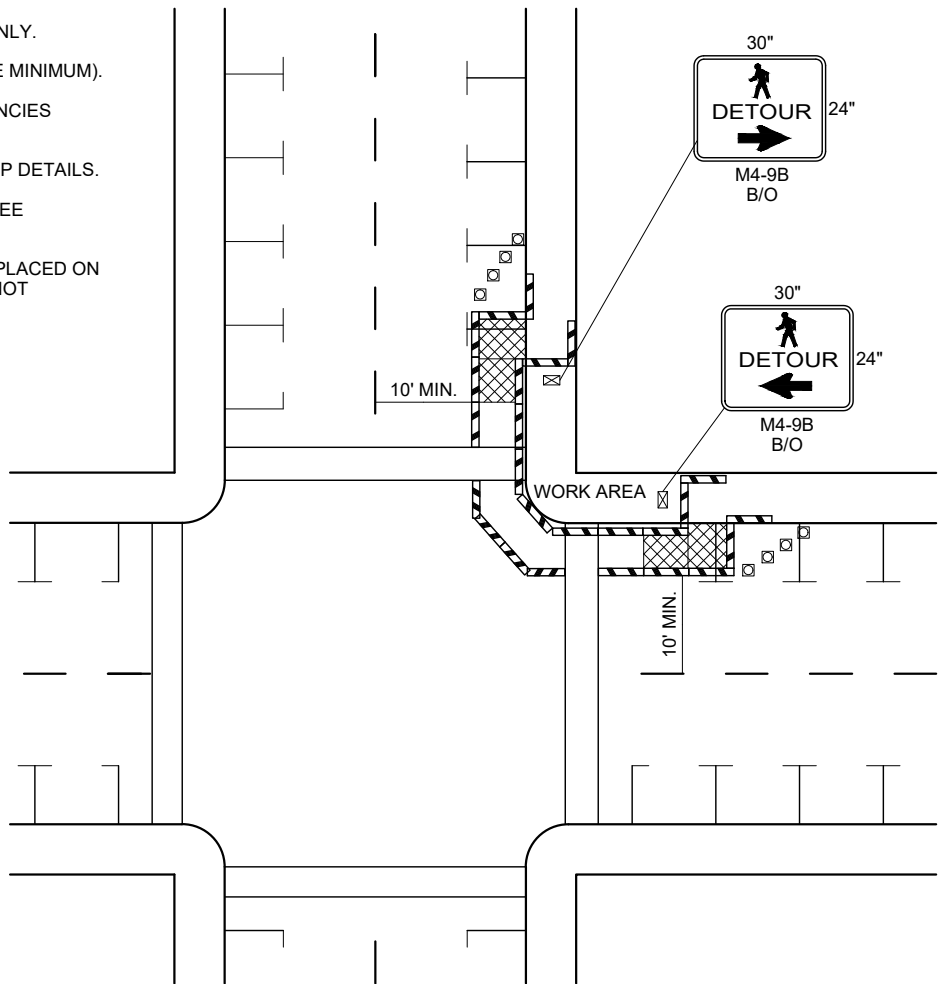
CITY PROJECT #:
26775

SHT. **74**
OF **76**

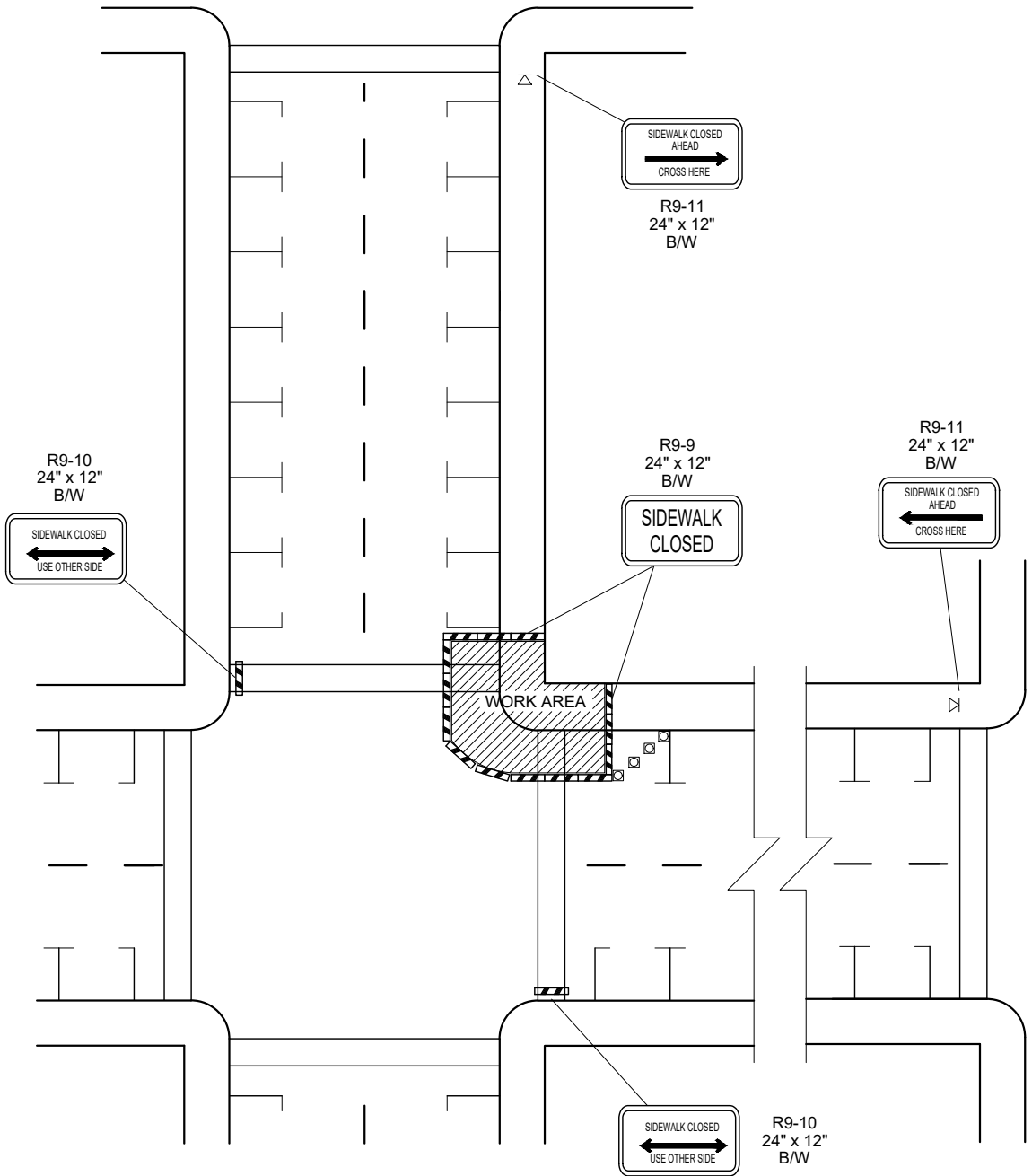
NO PARKING R8-3 24" x 30" R/W
 INSTALL ON TYPE 2 BARRICADES THROUGHOUT THE WORK AREA 24 HOURS PRIOR TO IMPLEMENTING TRAFFIC CONTROL. PRIOR NOTIFICATION OF LOCAL LAW ENFORCEMENT REQUIRED.

NOTES

1. CONTROLS SHOWN ARE FOR PEDESTRIAN TRAFFIC ONLY.
2. A 60" PATH WIDTH SHOULD BE MAINTAINED (48" IS THE MINIMUM).
3. CONTACT AND COORDINATE IMPACTED TRANSIT AGENCIES PRIOR TO IMPLEMENTING ANY CLOSURES.
4. SEE SHEET TC-52 FOR TEMPORARY PEDESTRIAN RAMP DETAILS.
5. ADA PEDESTRIAN FACILITIES MUST BE MAINTAINED. SEE STANDARD SPECIFICATION 1-10.2(1)B.
6. TEMPORARY PEDESTRIAN PUSH BUTTONS SHALL BE PLACED ON THE DIVERTED PATH WHEN EXISTING BUTTONS ARE NOT ACCESSIBLE TO PEDESTRIANS.



SIDEWALK DIVERSION



SIDEWALK DETOUR

LEGEND

- ⊠ TEMPORARY SIGN LOCATION
- ⊠ CHANNELIZING DEVICES
- ▨ PEDESTRIAN CHANNELIZING DEVICES
- TEMPORARY PEDESTRIAN RAMP FOR SIDEWALKS

(NOT TO SCALE)

100% DESIGN



33325 8th Avenue South Federal Way, WA 98003-6325 (253) 835-2700 www.cityoffederalway.com



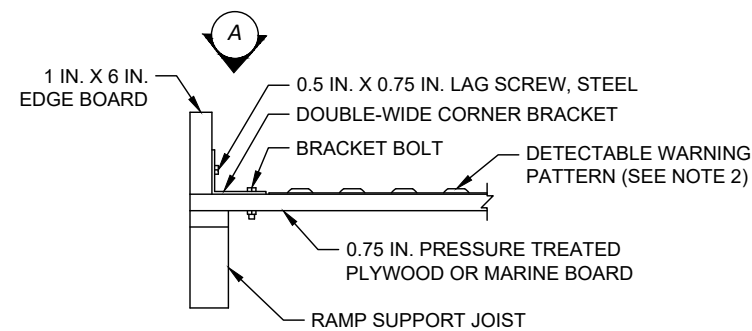
DRAFTED: D. MCINTOSH
 DESIGNED: K. DAVIS, P.E.
 REVIEWED: R. PEREZ, P.E.
 APPROVED: R. PEREZ, P.E.



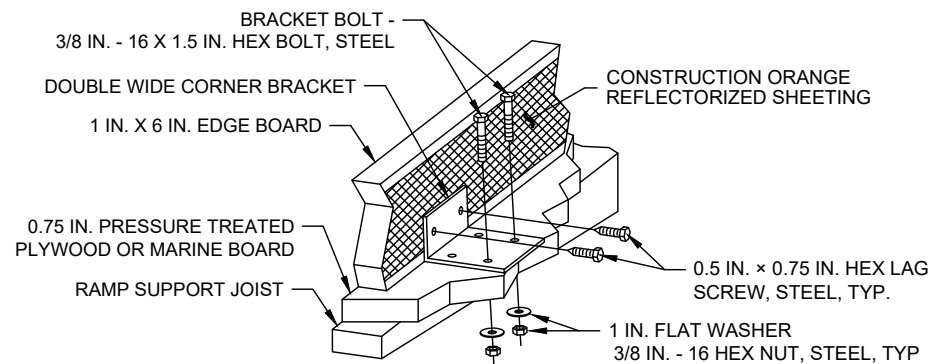
DRAWING VERSION / REVISION LOG		
NO.	DATE	REVISION

STREET LIGHT INFILL
TRAFFIC CONTROL PLANS
INTERSECTION PEDESTRIAN TRAFFIC CONTROL

CITY PROJECT #:
26775
 SHT. 75
 OF 76

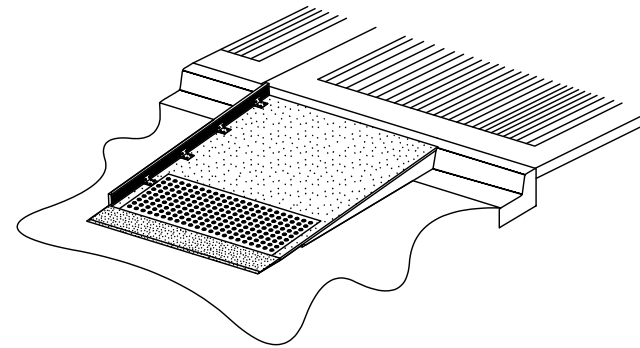


END VIEW

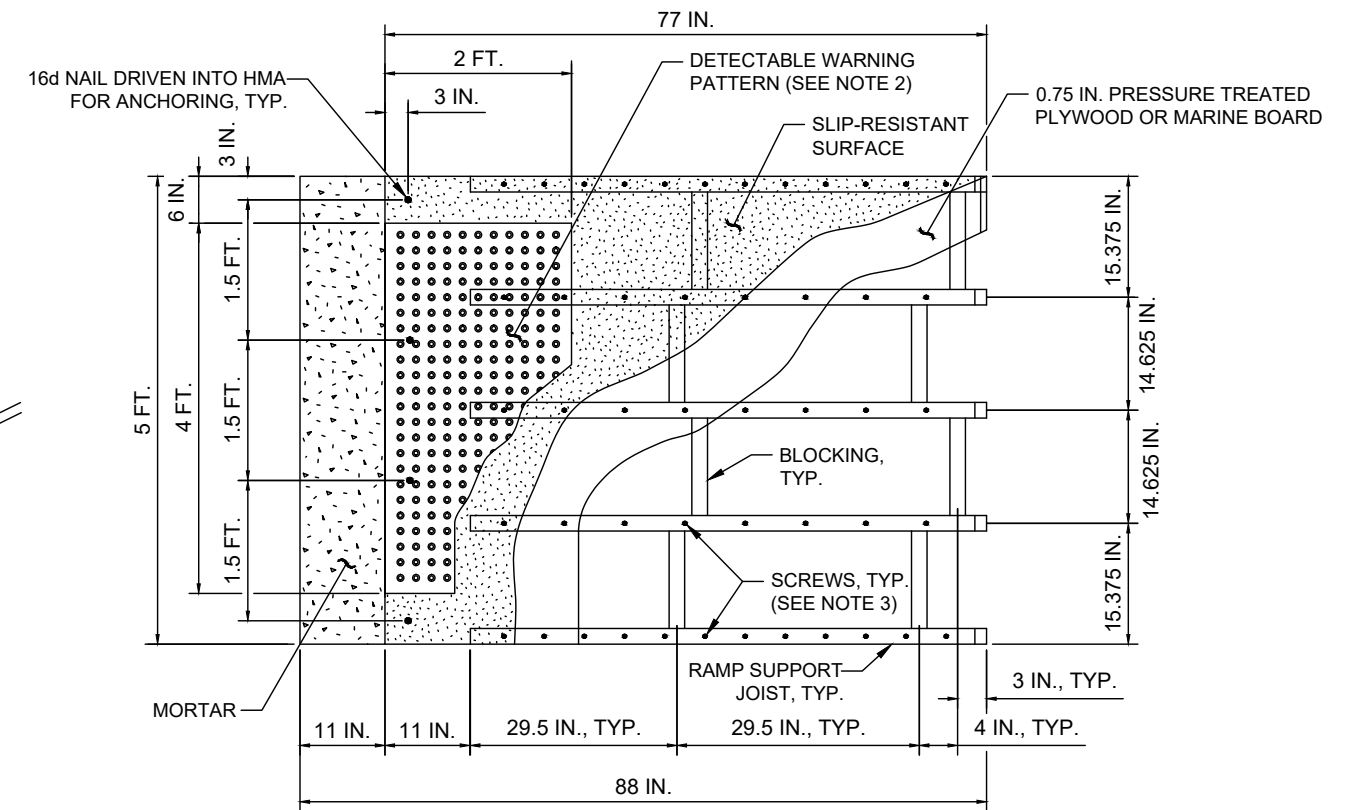


DETAIL - PERSPECTIVE VIEW

EDGE BOARD ATTACHMENT DETAIL



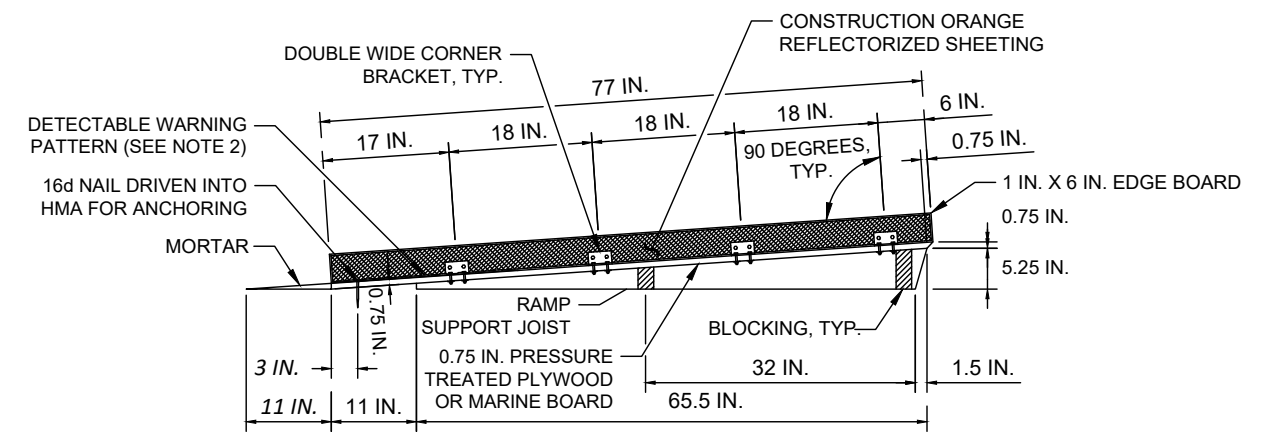
ISOMETRIC VIEW



TOP VIEW RAMP DETAIL

NOTES:

- 1) THIS DESIGN ASSUMES OPTIMAL CONDITIONS AND A STANDARD CURB HEIGHT OF 6 INCHES. INSTALLED RAMPS SHALL BE NO STEEPER THAN 12H : 1V, AND SHALL HAVE A CROSS-SLOPE OF 2% OR LESS. USE SHIMS OR GROUT AS REQUIRED TO ADJUST FOR EXISTING CONDITIONS AND TO PREVENT ROCKING. SHIMS SHALL BE NO HIGHER THAN 1-INCH, AND SHALL BE SECURED TO THE RAMP. FOR CURBS SHORTER THAN 6 INCHES, INSTALL A RAMP ON THE SIDEWALK, NO STEEPER THAN 12H : 1V, MADE OF GROUT OR AS APPROVED BY THE ENGINEER. ADJUSTMENTS TO THE RAMP DIMENSIONS SHOWN MAY BE REQUIRED TO MATCH EXISTING CONDITIONS.
- 2) THE DETECTABLE WARNING PATTERN SHALL BE INSTALLED ONLY WHEN THE INTENT IS TO GUIDE PEDESTRIANS DIRECTLY ACROSS THE ROADWAY (CROSSWALK). SEE WSDOT STANDARD PLAN F-45.10 AND STANDARD DRAWING PC.F8.4 FOR DETAILS.
- 3) SCREWS SHALL BE USED TO SECURE THE RAMP SURFACE. SPACING SHALL BE IN ACCORDANCE WITH THE CURRENT BUILDING CODE.
- 4) USE A SLIP-RESISTANT TREATMENT FOR THE SURFACE OF RAMP.
- 5) ALL FASTENERS SHALL BE GALVANIZED.
- 6) DO NOT INSTALL A HAND RAILING IF USING THE EDGE BOARD OPTION.



SIDE VIEW RAMP DETAIL

(NOT TO SCALE)

100% DESIGN



33325 8th Avenue South
Federal Way, WA 98003-6325
(253) 835-2700
www.cityoffederalway.com



DRAFTED: D. MCINTOSH
DESIGNED: K. DAVIS, P.E.
REVIEWED: R. PEREZ, P.E.
APPROVED: R. PEREZ, P.E.



DRAWING VERSION / REVISION LOG		
NO.	DATE	REVISION

STREET LIGHT INFILL
TRAFFIC CONTROL PLANS
TEMPORARY PEDESTRIAN RAMP WITH EDGE BOARD

CITY PROJECT #:
26775
SHT. 76
OF 76