

**6TH AVE SW - SW 365TH ST TO SW 356TH ST -- SHEET 1 OF 2**

LUMINAIRE SCHEDULE		SERVICE NO. 5535			
PLAN NUMBER	ID NUMBER	SERVICE - CIRCUIT	TYPE - WATTS	MASTARM	MTG HEIGHT
26	5535-1-SL1/3-26 (EX.)	8/361 - 1/3	EX.	EX.	EX.
27	5535-1-SL1/3-27 (EX.)	8/361 - 1/3	EX.	EX.	EX.
30	5535-1-SL1/3-30 (EX.)	8/361 - 1/3	EX.	EX.	EX.
31	5535-1-SL2-31 (EX.)	8/361 - 2	EX.	EX.	EX.
37	5535-1-SL2-37 (EX.)	8/361 - 2	EX.	EX.	EX.
38	5535-1-SL2-38	8/361 - 2	II - 60	8 FT	30 FT

WIRING SCHEDULE				
△ X	RUN NO.	CONDUIT	WIRE	COMMENTS
	1	2" PVC	2-#8 (ILLUM)	SHALL BE ALUMINUM

**NOTES**

- JUNCTION BOXES FOR 6TH AVE SW ARE INTENDED TO HAVE SPACING OF APPROXIMATELY 190 FEET FOR INSTALLATION OF ADDITIONAL LIGHT STANDARDS IN THE FUTURE. THE CONTRACTOR SHALL BEAR THIS IN MIND WHEN PLACING THE JUNCTION BOXES AND ATTEMPT TO ADHERE TO THE SPACING AND PLAN LOCATIONS AS MUCH AS IS PRACTICABLE. THE CONTRACTING AGENCY UNDERSTANDS THAT FIELD CONDITIONS MAY PRECLUDE THIS. ANY JUNCTION BOX SPACING GREATER THAN 250 FEET WILL NEED TO BE COORDINATED AND APPROVED BY THE ENGINEER, PRIOR TO INSTALLATION. IF FEWER JUNCTION BOXES ARE INSTALLED THAN SHOWN IN THE PLANS, THOSE BOXES SHALL BE DELIVERED TO THE KING COUNTY SIGNAL SHOP AT THE CONTRACTOR'S EXPENSE.

**CONSTRUCTION NOTES**

- INSTALL LIGHT STANDARD FOUNDATION, POLE, DAVIT ARM, AND LUMINAIRE IN APPROXIMATE LOCATION SHOWN (1 LOCATION THIS SHEET) AND IN ACCORDANCE WITH MANUFACTURER RECOMMENDATIONS, SPECIAL PROVISIONS, AND THE DETAILS ON SHEETS 60 AND 61.
- INSTALL TYPE 1 JUNCTION BOX (REFER TO STANDARD PLAN J-40.10 AND THE DETAILS ON SHEETS 65 AND 66) AT APPROXIMATE LOCATION SHOWN (1 BOX THIS SHEET). SEE NOTES.
- INSTALL CONDUIT INTO EXISTING JUNCTION BOX. SPLICE NEW CONDUCTORS TO EXISTING ILLUMINATION CONDUCTORS (2 LOCATIONS THIS SHEET).
- MAINTAIN AND PROTECT EXISTING ILLUMINATION SYSTEM.
- EXISTING SERVICE CABINET TO BE USED FOR PROPOSED LIGHT STANDARDS FOR 6 AVE SW - SW 365 ST TO SW 356 ST.

**GENERAL NOTES**

- MAINTAIN AND PROTECT EXISTING FEATURES (TREES/ SHRUBS/ VEGETATION, DITCHES, DRIVEWAYS, ETC.) WITHIN PROJECT SITE UNLESS OTHERWISE NOTED.
- UTILITIES ARE NOT SHOWN. IT IS THE CONTRACTOR'S RESPONSIBILITY TO AVOID AND PROTECT EXISTING UTILITIES AND RESOLVE CONFLICTS.
- ALL LIGHT STANDARDS AND JUNCTION BOXES SHALL BE INSTALLED WITHIN A CONCRETE PAD IN ACCORDANCE WITH THE DETAIL ON SHEET 63.
- ALL JUNCTION BOXES SHALL INCLUDE THE SYSTEM IDENTIFICATION LETTERS "LT".
- LIGHT STANDARDS SHALL BE PLACED SUCH THAT THERE IS A MINIMUM OF 6 FT FROM CENTER OF STANDARD TO EDGE LINE OR FACE OF CURB. THE CONTRACTOR SHALL NOT PLACE LIGHT STANDARDS IN FORMAL OR INFORMAL WALKING PATHS. THE CONTRACTOR SHALL NOT IMPEDE SIGHT DISTANCE, SIGN VISIBILITY, OR USPS ACCESS WITH LIGHT STANDARD PLACEMENT.
- THE LOCATIONS SHOWN OF POLES, JUNCTION BOXES, AND SERVICE CABINETS ARE APPROXIMATE AND SHOWN OVERSIZE. FIELD ADJUSTMENT MAY BE NECESSARY. SEE NOTES. ALL CONSTRUCTION AND ACTIVITIES SHALL BE LOCATED WITHIN CITY OF FEDERAL WAY PROPERTY. RIGHT-OF-WAY LINES SHOWN ARE APPROXIMATE.

**LEGEND**

- APPROXIMATE RIGHT-OF-WAY
- CONDUIT AND WIRING
- - - EX. CONDUIT AND WIRING
- △ WIRE NOTE
- CONSTRUCTION NOTE
- ⊙ LIGHT STANDARD AND LUMINAIRE
- ⊙ EX. CITY-OWNED LIGHT STANDARD AND LUMINAIRE
- ⊠ TYPE 1 JUNCTION BOX
- ⊠ EX. TYPE 1 JUNCTION BOX
- ⊠ EX. SERVICE CABINET
- ⊠ EX. SIGN AND POST TO BE MAINTAINED

100% DESIGN

DRAFTED: D. MCINTOSH  
 DESIGNED: K. DAVIS, P.E.  
 REVIEWED: R. PEREZ, P.E.  
 APPROVED: R. PEREZ, P.E.

DRAWING VERSION / REVISION LOG		
NO.	DATE	REVISION

**STREET LIGHT INFILL**

**ILLUMINATION SYSTEM - GROUP A**

**6 AVE SW - SW 365 ST TO SW 356 ST**

CITY PROJECT #: 26775  
 SHT. 31  
 OF 76

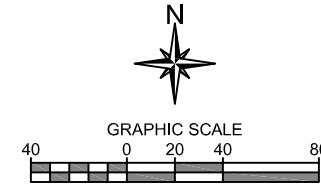
K:\ENGINEERING DIVISION\PROJECTS\ACTIVE\26775 - Streetlight Infill\03 PE\ACAD\6-365.dwg 12/12/2023 2:38 PM

MATCH LINE A - THIS SHEET

MATCH LINE B - THIS SHEET

SW 356TH ST

6TH AVE SW - SW 365TH ST TO SW 356TH ST -- SHEET 2 OF 2



**CONSTRUCTION NOTES**

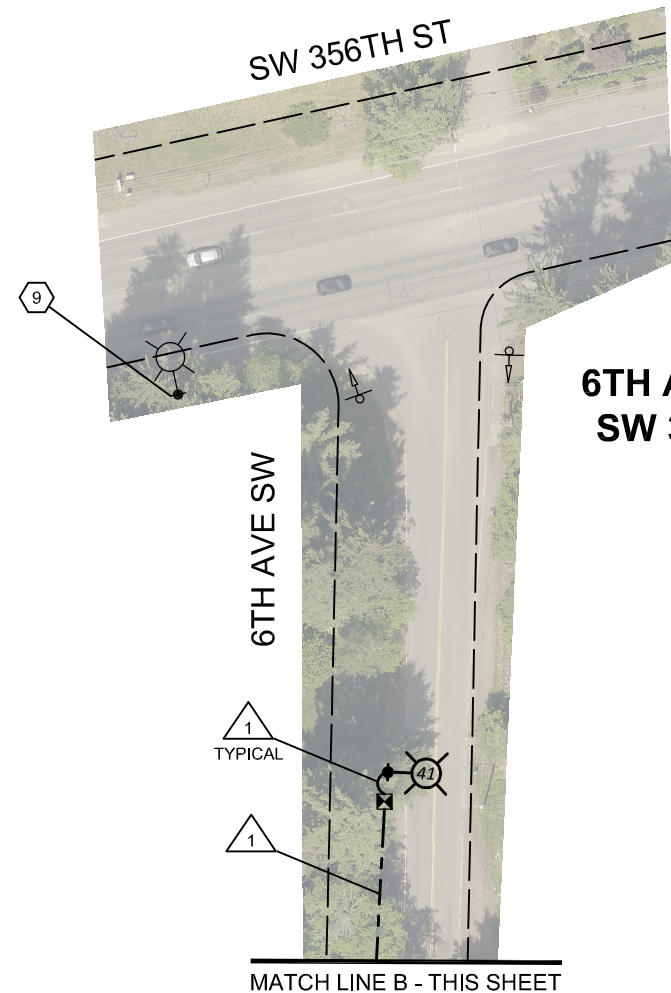
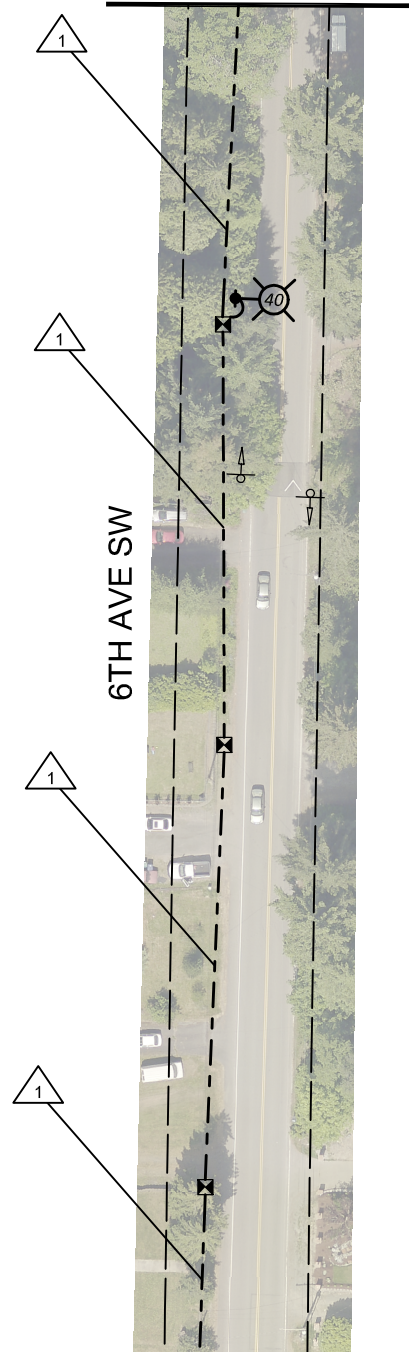
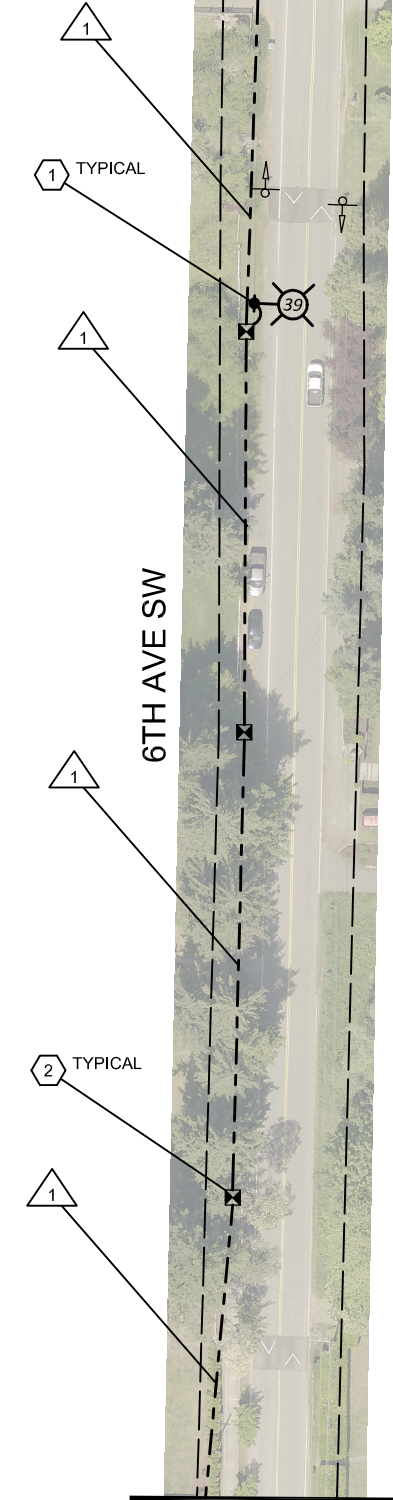
- ① INSTALL LIGHT STANDARD FOUNDATION, POLE, DAVIT ARM, AND LUMINAIRE IN APPROXIMATE LOCATION SHOWN (3 LOCATIONS THIS SHEET) AND IN ACCORDANCE WITH MANUFACTURER RECOMMENDATIONS, SPECIAL PROVISIONS, AND THE DETAILS ON SHEETS 60 AND 61.
- ② INSTALL TYPE 1 JUNCTION BOX (REFER TO STANDARD PLAN J-40.10 AND THE DETAILS ON SHEETS 65 AND 66) AT APPROXIMATE LOCATION SHOWN (7 BOXES THIS SHEET). SEE NOTES.
- ⑨ EXISTING PSE LUMINAIRE MOUNTED ON PSE POLE (1 LOCATION THIS SHEET).

**GENERAL NOTES**

- 1. MAINTAIN AND PROTECT EXISTING FEATURES (TREES/ SHRUBS/ VEGETATION, DITCHES, DRIVEWAYS, ETC.) WITHIN PROJECT SITE UNLESS OTHERWISE NOTED.
- 2. UTILITIES ARE NOT SHOWN. IT IS THE CONTRACTOR'S RESPONSIBILITY TO AVOID AND PROTECT EXISTING UTILITIES AND RESOLVE CONFLICTS.
- 3. ALL LIGHT STANDARDS AND JUNCTION BOXES SHALL BE INSTALLED WITHIN A CONCRETE PAD IN ACCORDANCE WITH THE DETAIL ON SHEET 63.
- 4. ALL JUNCTION BOXES SHALL INCLUDE THE SYSTEM IDENTIFICATION LETTERS "LT".
- 5. LIGHT STANDARDS SHALL BE PLACED SUCH THAT THERE IS A MINIMUM OF 6 FT FROM CENTER OF STANDARD TO EDGE LINE OR FACE OF CURB. THE CONTRACTOR SHALL NOT PLACE LIGHT STANDARDS IN FORMAL OR INFORMAL WALKING PATHS. THE CONTRACTOR SHALL NOT IMPEDE SIGHT DISTANCE, SIGN VISIBILITY, OR USPS ACCESS WITH LIGHT STANDARD PLACEMENT.
- 6. THE LOCATIONS SHOWN OF POLES, JUNCTION BOXES, AND SERVICE CABINETS ARE APPROXIMATE AND SHOWN OVERSIZE. FIELD ADJUSTMENT MAY BE NECESSARY. SEE NOTES. ALL CONSTRUCTION AND ACTIVITIES SHALL BE LOCATED WITHIN CITY OF FEDERAL WAY PROPERTY. RIGHT-OF-WAY LINES SHOWN ARE APPROXIMATE.

**LEGEND**

- APPROXIMATE RIGHT-OF-WAY
- CONDUIT AND WIRING
- - - EX. CONDUIT AND WIRING
- △ WIRE NOTE
- CONSTRUCTION NOTE
- ⊕ LIGHT STANDARD AND LUMINAIRE
- ⊕ EX. PSE LUMINAIRE AND POLE
- ⊠ TYPE 1 JUNCTION BOX
- ⊕ EX. SIGN AND POST TO BE MAINTAINED



**NOTES**

1. JUNCTION BOXES FOR 6TH AVE S ARE INTENDED TO HAVE SPACING OF APPROXIMATELY 190 FEET FOR INSTALLATION OF ADDITIONAL LIGHT STANDARDS IN THE FUTURE. THE CONTRACTOR SHALL BEAR THIS IN MIND WHEN PLACING THE JUNCTION BOXES AND ATTEMPT TO ADHERE TO THE SPACING AND PLAN LOCATIONS AS MUCH AS IS PRACTICABLE. THE CONTRACTING AGENCY UNDERSTANDS THAT FIELD CONDITIONS MAY PRECLUDE THIS. ANY JUNCTION BOX SPACING GREATER THAN 250 FEET WILL NEED TO BE COORDINATED AND APPROVED BY THE ENGINEER, PRIOR TO INSTALLATION. IF FEWER JUNCTION BOXES ARE INSTALLED THAN SHOWN IN THE PLANS, THOSE BOXES SHALL BE DELIVERED TO THE KING COUNTY SIGNAL SHOP AT THE CONTRACTOR'S EXPENSE.

LUMINAIRE SCHEDULE		SERVICE NO. 5535			
PLAN NUMBER	ID NUMBER	SERVICE - CIRCUIT	TYPE - WATTS	MASTARM	MTG HEIGHT
39	5535-1-SL2-39	8/361 - 2	II - 60	8 FT	30 FT
40	5535-1-SL2-40	8/361 - 2	II - 60	8 FT	30 FT
41	5535-1-SL2-41	8/361 - 2	II - 60	8 FT	30 FT

WIRING SCHEDULE			
△ X RUN NO.	CONDUIT	WIRE	COMMENTS
1	2" PVC	2-#8 (ILLUM)	SHALL BE ALUMINUM

100% DESIGN

**CITY OF Federal Way**  
Centered on Opportunity

33325 8th Avenue South  
Federal Way, WA 98003-6325

(253) 835-2700  
www.cityoffederalway.com

**811**  
Know what's below.  
Call 811 before you dig.

DRAFTED: D. MCINTOSH  
DESIGNED: K. DAVIS, P.E.  
REVIEWED: R. PEREZ, P.E.  
APPROVED: R. PEREZ, P.E.



DRAWING VERSION / REVISION LOG		
NO.	DATE	REVISION

**STREET LIGHT INFILL**

**ILLUMINATION SYSTEM - GROUP A**

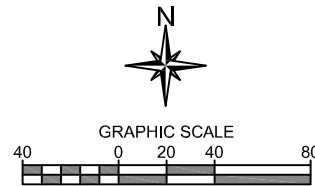
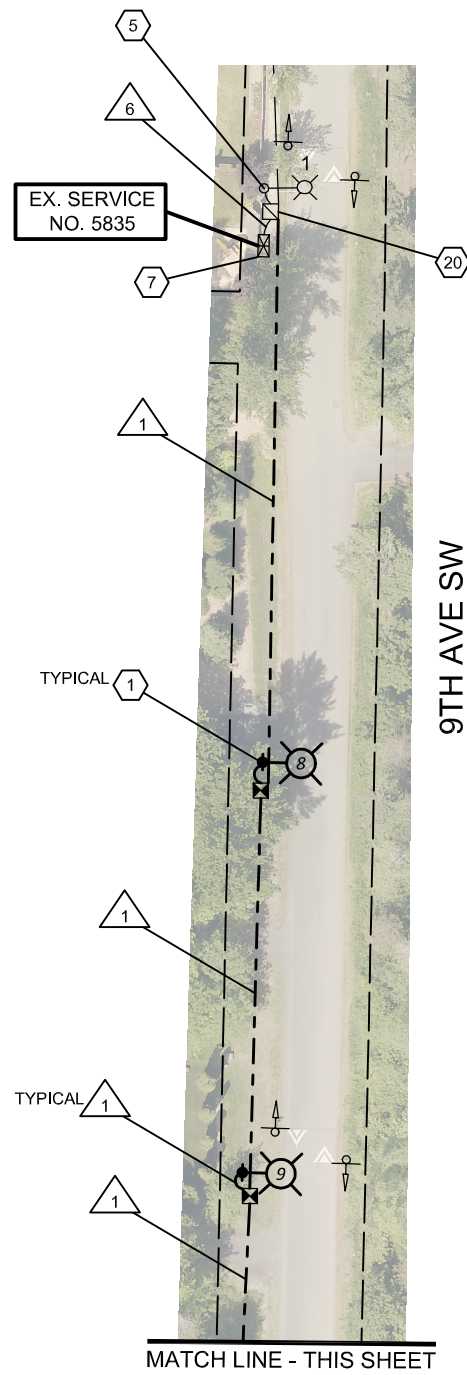
**6 AVE SW - SW 365 ST TO SW 356 ST**

CITY PROJECT #: 26775

SHT. 32  
OF 76

K:\ENGINEERING DIVISION\PROJECTS\ACTIVE\26775 - Streetlight Infill\03 PE\ACAD\06-365.dwg 12/12/2023 2:40 PM

K:\ENGINEERING DIVISION\PROJECTS\ACTIVE\26775 - Streetlight Infill\03 PEACAD\09-966.dwg 12/12/2023 2:41 PM



LUMINAIRE SCHEDULE					
SERVICE NO. 5835					
PLAN NUMBER	ID NUMBER	SERVICE - CIRCUIT	TYPE - WATTS	MASTARM	MTG HEIGHT
1	5835-1-SL2-1 (EX.)	9/365 - 2	EX.	EX.	EX.
8	5835-1-SL3-8	9/365 - 3	II - 60	8 FT	30 FT
9	5835-1-SL3-9	9/365 - 3	II - 60	8 FT	30 FT
10	5835-1-SL3-10	9/365 - 3	II - 60	8 FT	30 FT
11	5835-1-SL3-11	9/365 - 3	II - 60	8 FT	30 FT

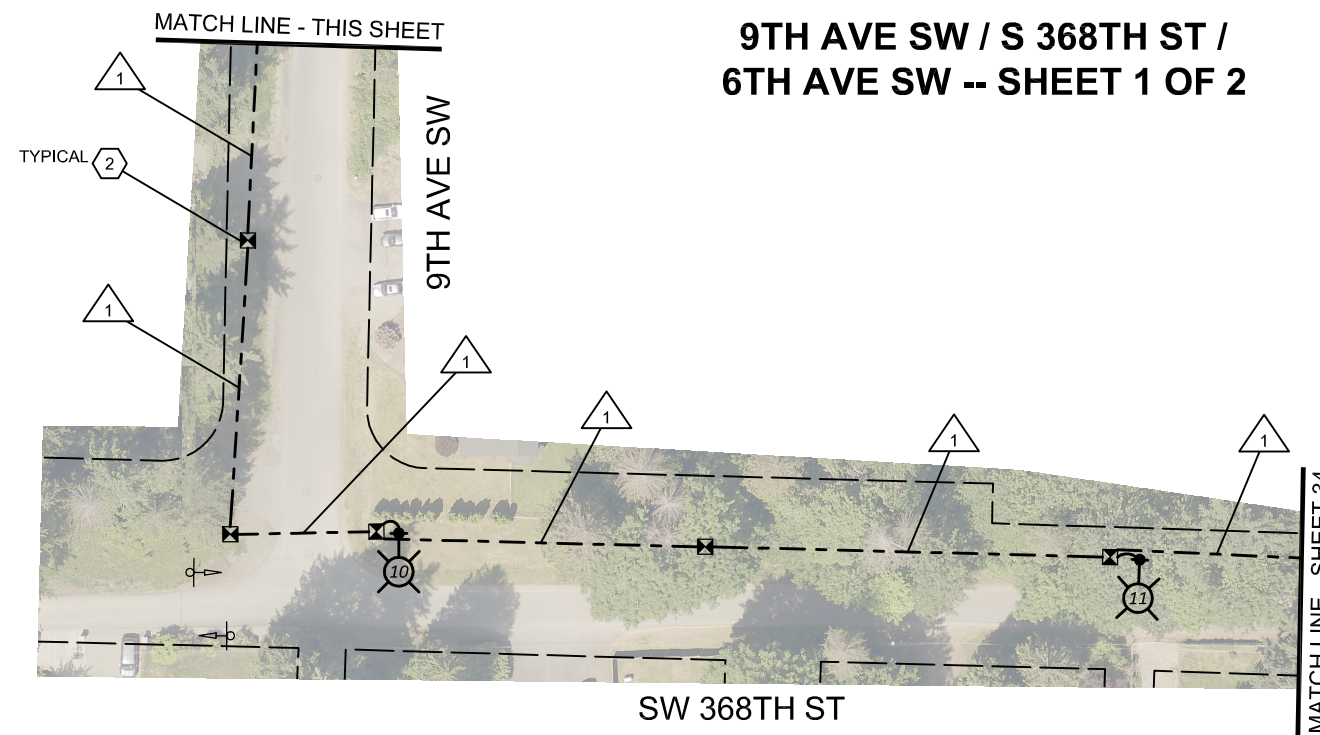
WIRING SCHEDULE				
X RUN NO.	CONDUIT	WIRE	COMMENTS	
1	2" PVC	2-#8 (ILLUM)	SHALL BE ALUMINUM	
6	EX.	NEW 2-#8 (ILLUM), EX. 4-#8 (ILLUM)	NEW CONDUCTORS SHALL BE ALUMINUM	

**CONSTRUCTION NOTES**

- 1 INSTALL LIGHT STANDARD FOUNDATION, POLE, DAVIT ARM, AND LUMINAIRE IN APPROXIMATE LOCATION SHOWN (4 LOCATIONS THIS SHEET) AND IN ACCORDANCE WITH MANUFACTURER RECOMMENDATIONS, SPECIAL PROVISIONS, AND THE DETAILS ON SHEETS 60 AND 61.
- 2 INSTALL TYPE 1 JUNCTION BOX (REFER TO STANDARD PLAN J-40.10 AND THE DETAILS ON SHEETS 65 AND 66) AT APPROXIMATE LOCATION SHOWN (7 BOXES THIS SHEET). SEE NOTES.
- 5 MAINTAIN AND PROTECT EXISTING ILLUMINATION SYSTEM.
- 7 EXISTING SERVICE CABINET TO BE USED FOR PROPOSED LIGHT STANDARDS FOR 9 AVE SW / SW 368 ST / 6 AVE SW.
- 20 INSTALL CONDUIT INTO EXISTING JUNCTION BOX. RUN NEW ILLUMINATION CONDUCTORS TO EXISTING SERVICE AND CONNECT TO LIGHTING CONTACTOR FOR CIRCUIT 3.

**GENERAL NOTES**

- 1. MAINTAIN AND PROTECT EXISTING FEATURES (TREES/ SHRUBS/ VEGETATION, DITCHES, DRIVEWAYS, ETC.) WITHIN PROJECT SITE UNLESS OTHERWISE NOTED.
- 2. UTILITIES ARE NOT SHOWN. IT IS THE CONTRACTOR'S RESPONSIBILITY TO AVOID AND PROTECT EXISTING UTILITIES AND RESOLVE CONFLICTS.
- 3. ALL LIGHT STANDARDS AND JUNCTION BOXES SHALL BE INSTALLED WITHIN A CONCRETE PAD IN ACCORDANCE WITH THE DETAIL ON SHEET 63.
- 4. ALL JUNCTION BOXES SHALL INCLUDE THE SYSTEM IDENTIFICATION LETTERS "LT".
- 5. LIGHT STANDARDS SHALL BE PLACED SUCH THAT THERE IS A MINIMUM OF 6 FT FROM CENTER OF STANDARD TO EDGE LINE OR FACE OF CURB. THE CONTRACTOR SHALL NOT PLACE LIGHT STANDARDS IN FORMAL OR INFORMAL WALKING PATHS. THE CONTRACTOR SHALL NOT IMPEDE SIGHT DISTANCE, SIGN VISIBILITY, OR USPS ACCESS WITH LIGHT STANDARD PLACEMENT.
- 6. THE LOCATIONS SHOWN OF POLES, JUNCTION BOXES, AND SERVICE CABINETS ARE APPROXIMATE AND SHOWN OVERSIZE. FIELD ADJUSTMENT MAY BE NECESSARY. SEE NOTES. ALL CONSTRUCTION AND ACTIVITIES SHALL BE LOCATED WITHIN CITY OF FEDERAL WAY PROPERTY. RIGHT-OF-WAY LINES SHOWN ARE APPROXIMATE.



**NOTES**

- 1. JUNCTION BOXES FOR 9TH AVE SW AND SW 368TH ST ARE INTENDED TO HAVE SPACING OF APPROXIMATELY 190 FEET FOR INSTALLATION OF ADDITIONAL LIGHT STANDARDS IN THE FUTURE. THE CONTRACTOR SHALL BEAR THIS IN MIND WHEN PLACING THE JUNCTION BOXES AND ATTEMPT TO ADHERE TO THE SPACING AND PLAN LOCATIONS AS MUCH AS IS PRACTICABLE. THE CONTRACTING AGENCY UNDERSTANDS THAT FIELD CONDITIONS MAY PRECLUDE THIS. ANY JUNCTION BOX SPACING GREATER THAN 250 FEET WILL NEED TO BE COORDINATED AND APPROVED BY THE ENGINEER, PRIOR TO INSTALLATION. IF FEWER JUNCTION BOXES ARE INSTALLED THAN SHOWN IN THE PLANS, THOSE BOXES SHALL BE DELIVERED TO THE KING COUNTY SIGNAL SHOP AT THE CONTRACTOR'S EXPENSE.

**LEGEND**

- APPROXIMATE RIGHT-OF-WAY
- CONDUIT AND WIRING
- - - EX. CONDUIT AND WIRING
- △ WIRE NOTE
- CONSTRUCTION NOTE
- ⊕ LIGHT STANDARD AND LUMINAIRE
- ⊕ EX. CITY-OWNED LIGHT STANDARD AND LUMINAIRE
- ⊠ TYPE 1 JUNCTION BOX
- ⊠ EX. TYPE 2 JUNCTION BOX
- ⊠ EX. SERVICE CABINET
- ⊕ EX. SIGN AND POST TO BE MAINTAINED

100% DESIGN

**CITY OF Federal Way**  
Centered on Opportunity  
33325 8th Avenue South  
Federal Way, WA 98003-6325  
(253) 835-2700  
www.cityoffederalway.com

**811**  
Know what's below.  
Call 811 before you dig.

DRAFTED: D. MCINTOSH  
DESIGNED: K. DAVIS, P.E.  
REVIEWED: R. PEREZ, P.E.  
APPROVED: R. PEREZ, P.E.



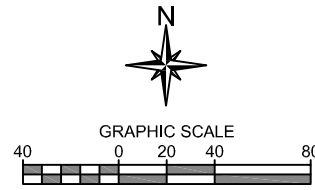
DRAWING VERSION / REVISION LOG		
NO.	DATE	REVISION

**STREET LIGHT INFILL**  
**ILLUMINATION SYSTEM - GROUP A**  
**9 AVE SW / SW 368 ST / 6 AVE SW**

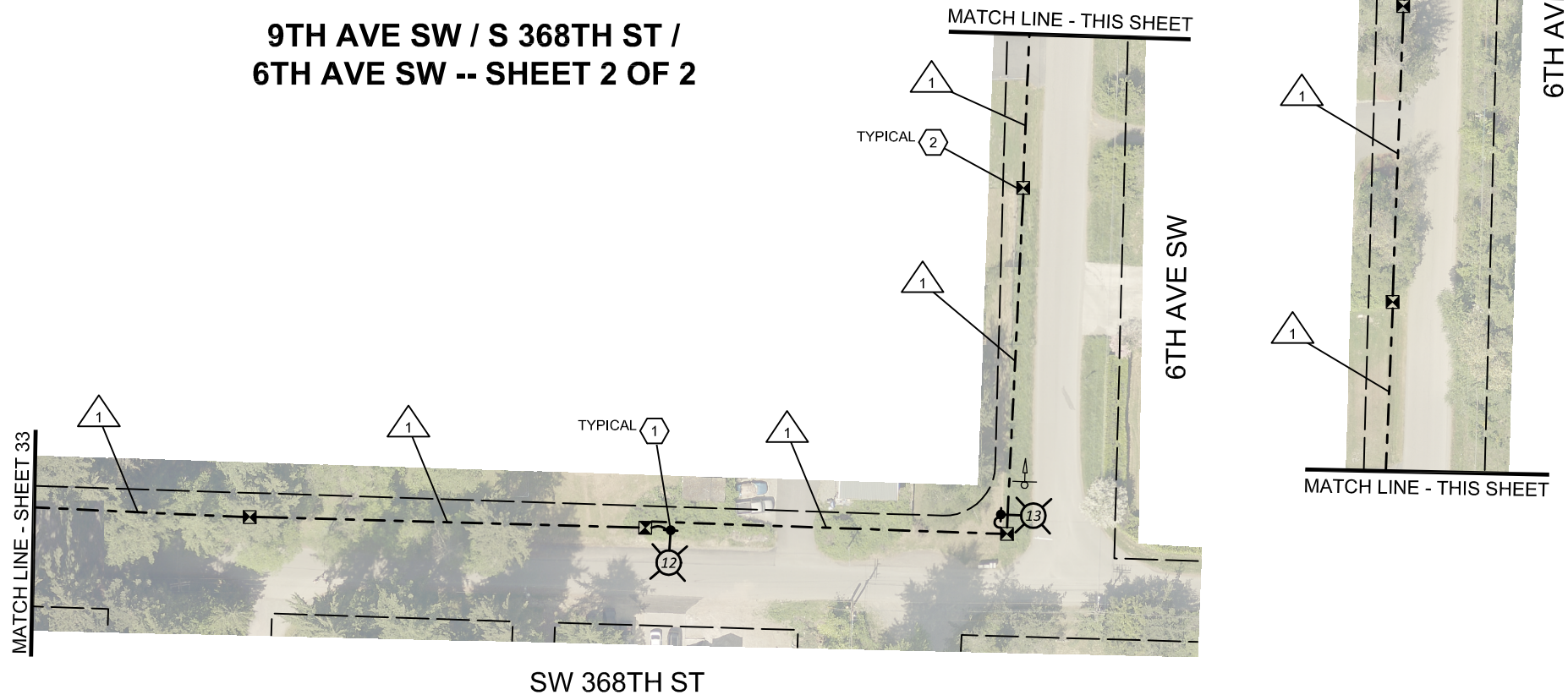
CITY PROJECT #:  
**26775**  
SHT. **33**  
OF **76**

LUMINAIRE SCHEDULE			SERVICE NO. 5835		
PLAN NUMBER	ID NUMBER	SERVICE - CIRCUIT	TYPE - WATTS	MASTARM	MTG HEIGHT
12	5835-1-SL3-12	9/365 - 3	II - 60	8 FT	30 FT
13	5835-1-SL3-13	9/365 - 3	II - 60	8 FT	30 FT
14	5835-1-SL3-14	9/365 - 3	II - 60	8 FT	30 FT

WIRING SCHEDULE				
X	RUN NO.	CONDUIT	WIRE	COMMENTS
	1	2" PVC	2-#8 (ILLUM)	SHALL BE ALUMINUM



**9TH AVE SW / S 368TH ST /  
6TH AVE SW -- SHEET 2 OF 2**



**CONSTRUCTION NOTES**

- ① INSTALL LIGHT STANDARD FOUNDATION, POLE, DAVIT ARM, AND LUMINAIRE IN APPROXIMATE LOCATION SHOWN (3 LOCATIONS THIS SHEET) AND IN ACCORDANCE WITH MANUFACTURER RECOMMENDATIONS, SPECIAL PROVISIONS, AND THE DETAILS ON SHEETS 60 AND 61.
- ② INSTALL TYPE 1 JUNCTION BOX (REFER TO STANDARD PLAN J-40.10 AND THE DETAILS ON SHEETS 65 AND 66) AT APPROXIMATE LOCATION SHOWN (7 BOXES THIS SHEET). SEE NOTES.
- ⑨ EXISTING PSE LUMINAIRE MOUNTED ON PSE POLE (1 LOCATION THIS SHEET).

**GENERAL NOTES**

- 1. MAINTAIN AND PROTECT EXISTING FEATURES (TREES/ SHRUBS/ VEGETATION, DITCHES, DRIVEWAYS, ETC.) WITHIN PROJECT SITE UNLESS OTHERWISE NOTED.
- 2. UTILITIES ARE NOT SHOWN. IT IS THE CONTRACTOR'S RESPONSIBILITY TO AVOID AND PROTECT EXISTING UTILITIES AND RESOLVE CONFLICTS.
- 3. ALL LIGHT STANDARDS AND JUNCTION BOXES SHALL BE INSTALLED WITHIN A CONCRETE PAD IN ACCORDANCE WITH THE DETAIL ON SHEET 63.
- 4. ALL JUNCTION BOXES SHALL INCLUDE THE SYSTEM IDENTIFICATION LETTERS "LT".
- 5. LIGHT STANDARDS SHALL BE PLACED SUCH THAT THERE IS A MINIMUM OF 6 FT FROM CENTER OF STANDARD TO EDGE LINE OR FACE OF CURB. THE CONTRACTOR SHALL NOT PLACE LIGHT STANDARDS IN FORMAL OR INFORMAL WALKING PATHS. THE CONTRACTOR SHALL NOT IMPEDE SIGHT DISTANCE, SIGN VISIBILITY, OR USPS ACCESS WITH LIGHT STANDARD PLACEMENT.
- 6. THE LOCATIONS SHOWN OF POLES, JUNCTION BOXES, AND SERVICE CABINETS ARE APPROXIMATE AND SHOWN OVERSIZE. FIELD ADJUSTMENT MAY BE NECESSARY. SEE NOTES. ALL CONSTRUCTION AND ACTIVITIES SHALL BE LOCATED WITHIN CITY OF FEDERAL WAY PROPERTY. RIGHT-OF-WAY LINES SHOWN ARE APPROXIMATE.

**NOTES**

- 1. JUNCTION BOXES FOR SW 368TH ST AND 6TH AVE SW ARE INTENDED TO HAVE SPACING OF APPROXIMATELY 190 FEET FOR INSTALLATION OF ADDITIONAL LIGHT STANDARDS IN THE FUTURE. THE CONTRACTOR SHALL BEAR THIS IN MIND WHEN PLACING THE JUNCTION BOXES AND ATTEMPT TO ADHERE TO THE SPACING AND PLAN LOCATIONS AS MUCH AS IS PRACTICABLE. THE CONTRACTING AGENCY UNDERSTANDS THAT FIELD CONDITIONS MAY PRECLUDE THIS. ANY JUNCTION BOX SPACING GREATER THAN 250 FEET WILL NEED TO BE COORDINATED AND APPROVED BY THE ENGINEER, PRIOR TO INSTALLATION. IF FEWER JUNCTION BOXES ARE INSTALLED THAN SHOWN IN THE PLANS, THOSE BOXES SHALL BE DELIVERED TO THE KING COUNTY SIGNAL SHOP AT THE CONTRACTOR'S EXPENSE.

**LEGEND**

- APPROXIMATE RIGHT-OF-WAY
- CONDUIT AND WIRING
- △ WIRE NOTE
- ⑨ CONSTRUCTION NOTE
- ☉ LIGHT STANDARD AND LUMINAIRE
- ☉ EX. PSE LUMINAIRE AND POLE
- ☒ TYPE 1 JUNCTION BOX
- ☛ EX. SIGN AND POST TO BE MAINTAINED

100% DESIGN

**CITY OF Federal Way**  
Centered on Opportunity  
33325 8th Avenue South  
Federal Way, WA 98003-6325  
(253) 835-2700  
www.cityoffederalway.com

**811**  
Know what's below.  
Call 811 before you dig.

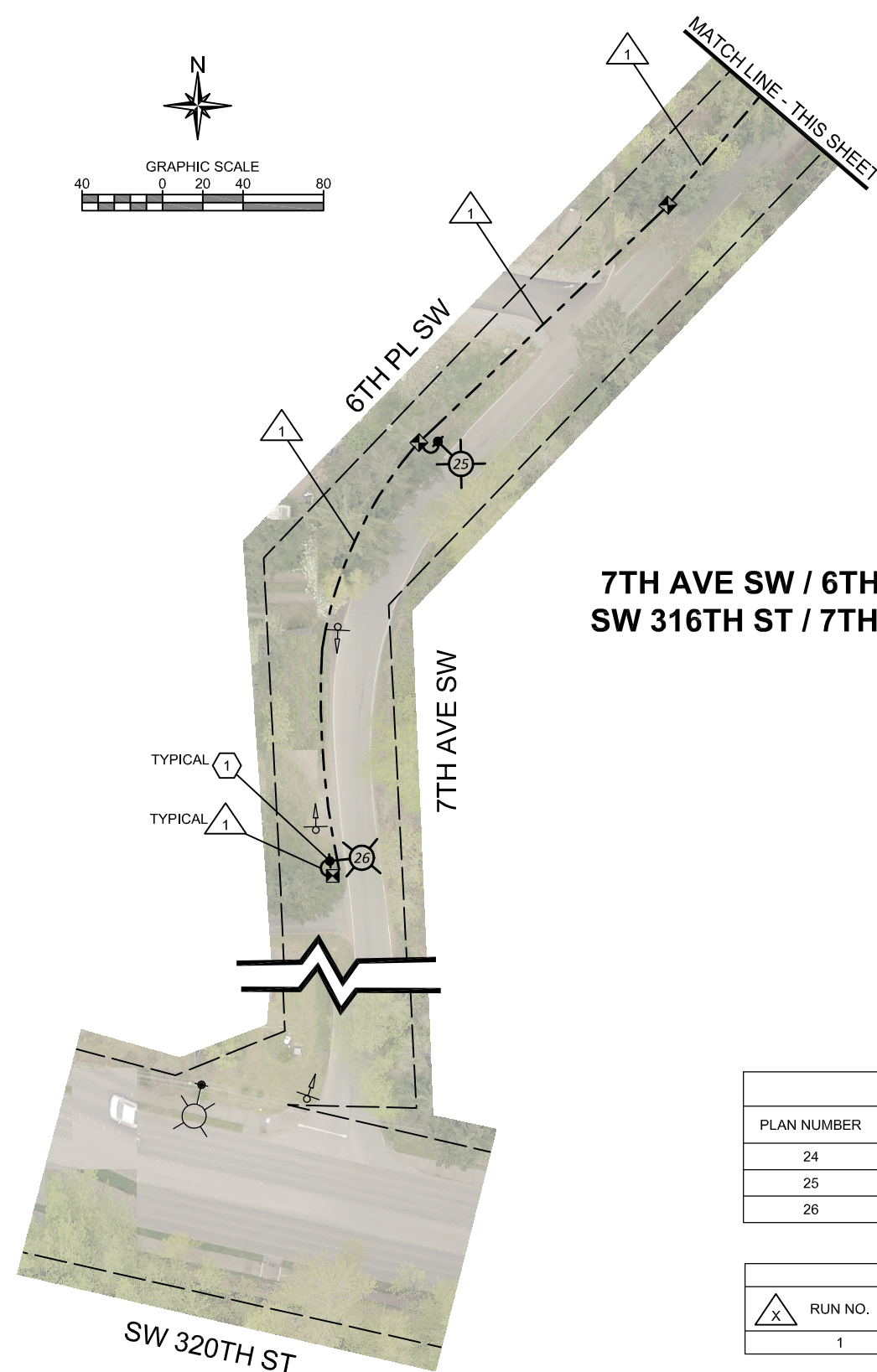
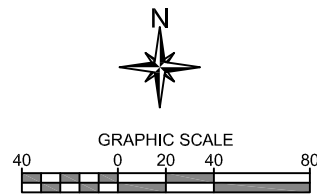
DRAFTED: D. MCINTOSH  
DESIGNED: K. DAVIS, P.E.  
REVIEWED: R. PEREZ, P.E.  
APPROVED: R. PEREZ, P.E.



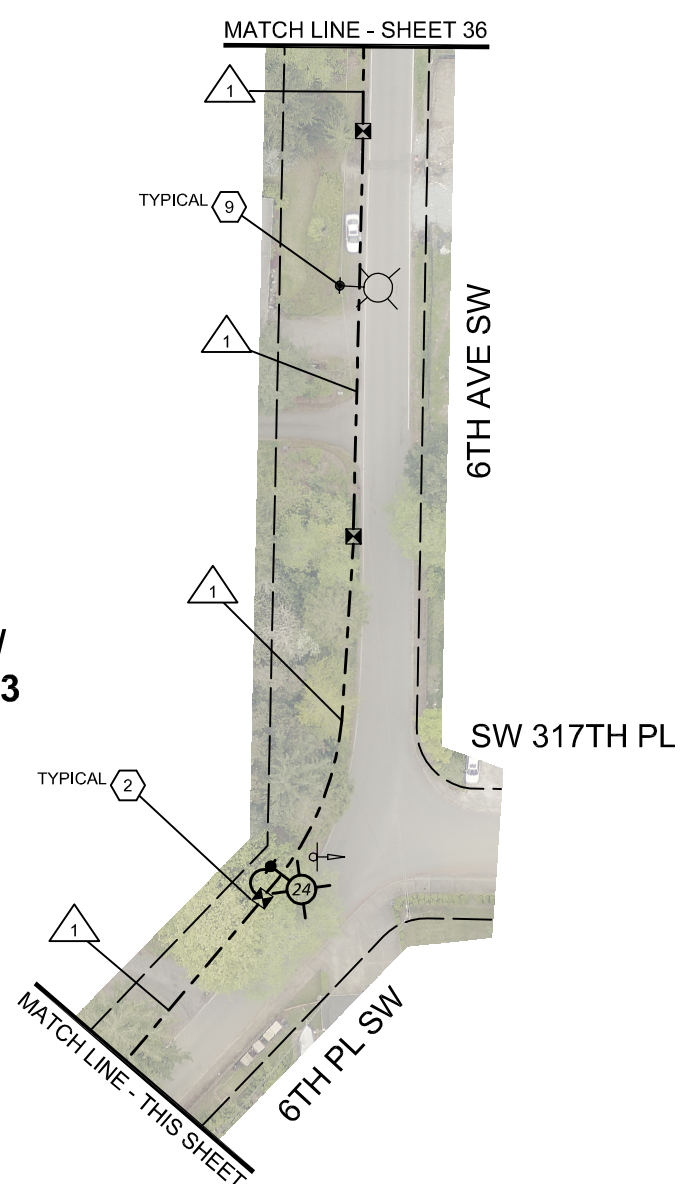
DRAWING VERSION / REVISION LOG		
NO.	DATE	REVISION

**STREET LIGHT INFILL**  
**ILLUMINATION SYSTEM - GROUP A**  
**9 AVE SW / SW 368 ST / 6 AVE SW**

CITY PROJECT #:  
**26775**  
SHT. **34**  
OF **76**



**7TH AVE SW / 6TH PL SW / 6TH AVE SW / SW 316TH ST / 7TH PL SW -- SHEET 1 OF 3**



**CONSTRUCTION NOTES**

- ① INSTALL LIGHT STANDARD FOUNDATION, POLE, DAVIT ARM, AND LUMINAIRE IN APPROXIMATE LOCATION SHOWN (3 LOCATIONS THIS SHEET) AND IN ACCORDANCE WITH MANUFACTURER RECOMMENDATIONS, SPECIAL PROVISIONS, AND THE DETAILS ON SHEETS 60 AND 61.
- ② INSTALL TYPE 1 JUNCTION BOX (REFER TO STANDARD PLAN J-40.10 AND THE DETAILS ON SHEETS 65 AND 68) AT APPROXIMATE LOCATION SHOWN (6 BOXES THIS SHEET). SEE NOTES.
- ⑨ EXISTING PSE LUMINAIRE MOUNTED ON PSE POLE (2 LOCATIONS THIS SHEET).

**GENERAL NOTES**

1. MAINTAIN AND PROTECT EXISTING FEATURES (TREES/ SHRUBS/ VEGETATION, DITCHES, DRIVEWAYS, ETC.) WITHIN PROJECT SITE UNLESS OTHERWISE NOTED.
2. UTILITIES ARE NOT SHOWN. IT IS THE CONTRACTOR'S RESPONSIBILITY TO AVOID AND PROTECT EXISTING UTILITIES AND RESOLVE CONFLICTS.
3. ALL LIGHT STANDARDS AND JUNCTION BOXES SHALL BE INSTALLED WITHIN A CONCRETE PAD IN ACCORDANCE WITH THE DETAIL ON SHEET 63.
4. ALL JUNCTION BOXES SHALL INCLUDE THE SYSTEM IDENTIFICATION LETTERS "LT".
5. LIGHT STANDARDS SHALL BE PLACED SUCH THAT THERE IS A MINIMUM OF 6 FT FROM CENTER OF STANDARD TO EDGE LINE OR FACE OF CURB. THE CONTRACTOR SHALL NOT PLACE LIGHT STANDARDS IN FORMAL OR INFORMAL WALKING PATHS. THE CONTRACTOR SHALL NOT IMPEDE SIGHT DISTANCE, SIGN VISIBILITY, OR USPS ACCESS WITH LIGHT STANDARD PLACEMENT.
6. THE LOCATIONS SHOWN OF POLES, JUNCTION BOXES, AND SERVICE CABINETS ARE APPROXIMATE AND SHOWN OVERSIZE. FIELD ADJUSTMENT MAY BE NECESSARY. SEE NOTES. ALL CONSTRUCTION AND ACTIVITIES SHALL BE LOCATED WITHIN CITY OF FEDERAL WAY PROPERTY. RIGHT-OF-WAY LINES SHOWN ARE APPROXIMATE.

LUMINAIRE SCHEDULE			SERVICE NO. 2735		
PLAN NUMBER	ID NUMBER	SERVICE - CIRCUIT	TYPE - WATTS	MASTARM	MTG HEIGHT
24	2735-1-SL2-24	8/315 - 2	II - 60	8 FT	30 FT
25	2735-1-SL2-25	8/315 - 2	II - 60	8 FT	30 FT
26	2735-1-SL2-26	8/315 - 2	II - 60	8 FT	30 FT

WIRING SCHEDULE			
△ X RUN NO.	CONDUIT	WIRE	COMMENTS
1	2" PVC	2-#8 (ILLUM)	SHALL BE ALUMINUM

**LEGEND**

---	APPROXIMATE RIGHT-OF-WAY	⊠	TYPE 1 JUNCTION BOX
---	CONDUIT AND WIRING	⊕	EX. SIGN AND POST TO BE MAINTAINED
△	WIRE NOTE	⊙	CONSTRUCTION NOTE
⊙	LIGHT STANDARD AND LUMINAIRE	⊙	EX. PSE LUMINAIRE AND POLE

- NOTES**
1. JUNCTION BOXES FOR 7TH AVE SW AND 6TH PL SW ARE INTENDED TO HAVE SPACING OF APPROXIMATELY 190 FEET FOR INSTALLATION OF ADDITIONAL LIGHT STANDARDS IN THE FUTURE. THE CONTRACTOR SHALL BEAR THIS IN MIND WHEN PLACING THE JUNCTION BOXES AND ATTEMPT TO ADHERE TO THE SPACING AND PLAN LOCATIONS AS MUCH AS IS PRACTICABLE. THE CONTRACTING AGENCY UNDERSTANDS THAT FIELD CONDITIONS MAY PRECLUDE THIS. ANY JUNCTION BOX SPACING GREATER THAN 250 FEET WILL NEED TO BE COORDINATED AND APPROVED BY THE ENGINEER, PRIOR TO INSTALLATION. IF FEWER JUNCTION BOXES ARE INSTALLED THAN SHOWN IN THE PLANS, THOSE BOXES SHALL BE DELIVERED TO THE KING COUNTY SIGNAL SHOP AT THE CONTRACTOR'S EXPENSE.

100% DESIGN

DRAFTED: D. MCINTOSH  
 DESIGNED: K. DAVIS, P.E.  
 REVIEWED: R. PEREZ, P.E.  
 APPROVED: R. PEREZ, P.E.

DRAWING VERSION / REVISION LOG		
NO.	DATE	REVISION

**STREET LIGHT INFILL**

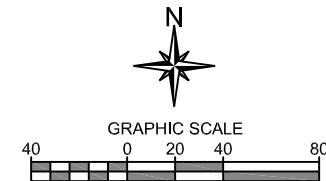
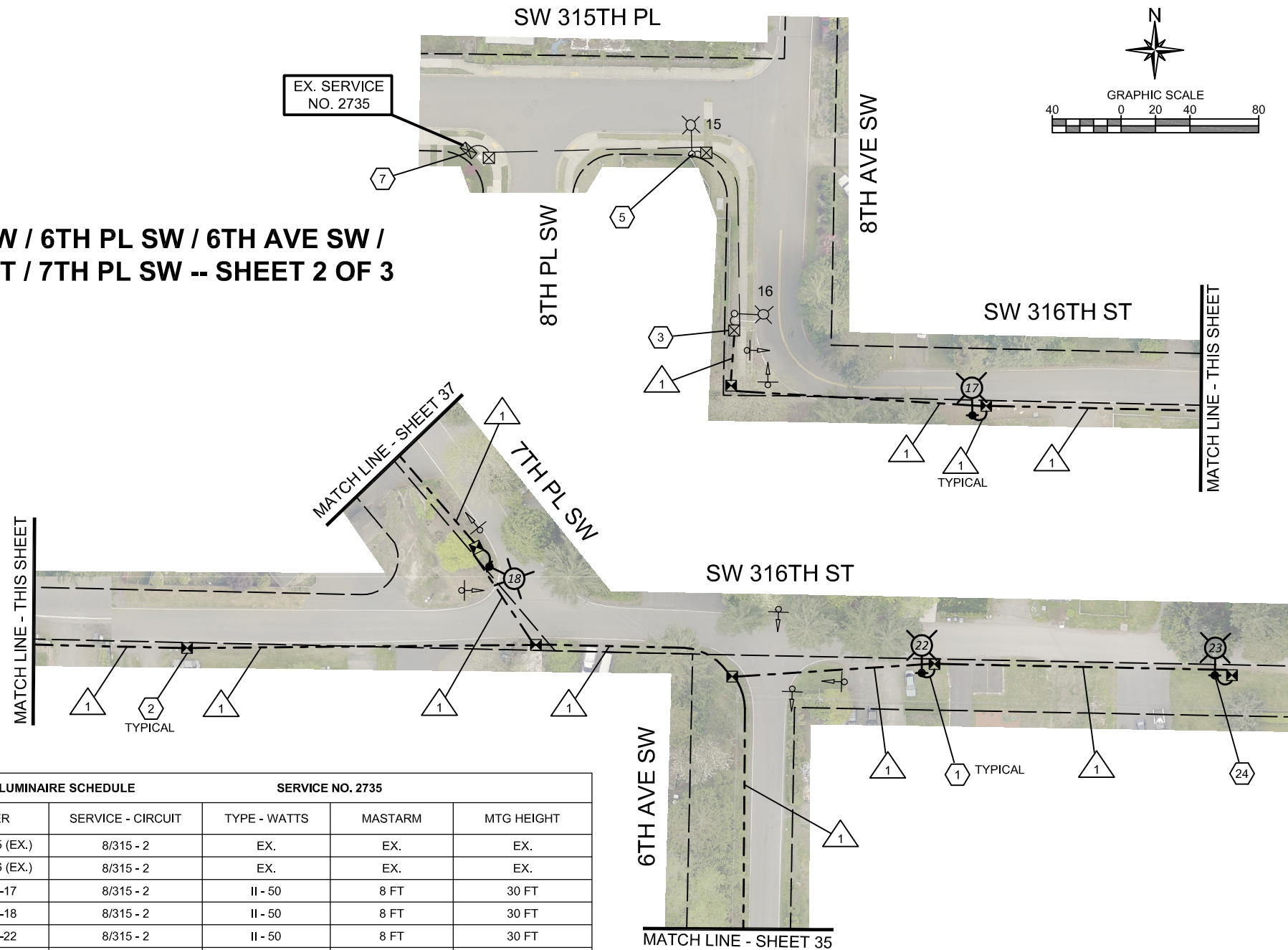
**ILLUMINATION SYSTEM - GROUP B**

**7 AVE SW / 6 PL SW / 6 AVE SW / SW 316 ST / 7 PL SW**

CITY PROJECT #: 26775  
 SH. 35  
 OF 76

K:\ENGINEERING DIVISION\PROJECTS\ACTIVE\26775 - Streetlight Infill\03 PE\CAD\17-320.dwg 12/12/2023 2:44 PM

**7TH AVE SW / 6TH PL SW / 6TH AVE SW / SW 316TH ST / 7TH PL SW -- SHEET 2 OF 3**



- CONSTRUCTION NOTES**
1. INSTALL LIGHT STANDARD FOUNDATION, POLE, DAVIT ARM, AND LUMINAIRE IN APPROXIMATE LOCATION SHOWN (4 LOCATIONS THIS SHEET) AND IN ACCORDANCE WITH MANUFACTURER RECOMMENDATIONS, SPECIAL PROVISIONS, AND THE DETAILS ON SHEETS 60 AND 61.
  2. INSTALL TYPE 1 JUNCTION BOX (REFER TO STANDARD PLAN J-40.10 AND THE DETAILS ON SHEETS 65 AND 66) AT APPROXIMATE LOCATION SHOWN (8 BOXES THIS SHEET). SEE NOTES.
  3. INSTALL CONDUIT INTO EXISTING JUNCTION BOX. SPLICE NEW CONDUCTORS TO EXISTING ILLUMINATION CONDUCTORS.
  5. MAINTAIN AND PROTECT EXISTING ILLUMINATION SYSTEM.
  7. EXISTING SERVICE CABINET TO BE USED FOR PROPOSED LIGHT STANDARDS FOR 7 AVE SW / 6 PL SW / 6 AVE SW / SW 316 ST / 7 PL SW.
  24. INSTALL WIRELESS GATEWAY ON LIGHT STANDARD FOR LIGHTING CONTROL COMMUNICATIONS.

- GENERAL NOTES**
1. MAINTAIN AND PROTECT EXISTING FEATURES (TREES/ SHRUBS/ VEGETATION, DITCHES, DRIVEWAYS, ETC.) WITHIN PROJECT SITE UNLESS OTHERWISE NOTED.
  2. UTILITIES ARE NOT SHOWN. IT IS THE CONTRACTOR'S RESPONSIBILITY TO AVOID AND PROTECT EXISTING UTILITIES AND RESOLVE CONFLICTS.
  3. ALL LIGHT STANDARDS AND JUNCTION BOXES SHALL BE INSTALLED WITHIN A CONCRETE PAD IN ACCORDANCE WITH THE DETAIL ON SHEET 63.
  4. ALL JUNCTION BOXES SHALL INCLUDE THE SYSTEM IDENTIFICATION LETTERS "LT".
  5. LIGHT STANDARDS SHALL BE PLACED SUCH THAT THERE IS A MINIMUM OF 6 FT FROM CENTER OF STANDARD TO EDGE LINE OR FACE OF CURB. THE CONTRACTOR SHALL NOT PLACE LIGHT STANDARDS IN FORMAL OR INFORMAL WALKING PATHS. THE CONTRACTOR SHALL NOT IMPEDE SIGHT DISTANCE, SIGN VISIBILITY, OR USPS ACCESS WITH LIGHT STANDARD PLACEMENT.
  6. THE LOCATIONS SHOWN OF POLES, JUNCTION BOXES, AND SERVICE CABINETS ARE APPROXIMATE AND SHOWN OVERSIZE. FIELD ADJUSTMENT MAY BE NECESSARY. SEE NOTES. ALL CONSTRUCTION AND ACTIVITIES SHALL BE LOCATED WITHIN CITY OF FEDERAL WAY PROPERTY. RIGHT-OF-WAY LINES SHOWN ARE APPROXIMATE.

LUMINAIRE SCHEDULE					
SERVICE NO. 2735					
PLAN NUMBER	ID NUMBER	SERVICE - CIRCUIT	TYPE - WATTS	MASTARM	MTG HEIGHT
15	2735-1-SL2-15 (EX.)	8/315 - 2	EX.	EX.	EX.
16	2735-1-SL2-16 (EX.)	8/315 - 2	EX.	EX.	EX.
17	2735-1-SL2-17	8/315 - 2	II - 50	8 FT	30 FT
18	2735-1-SL2-18	8/315 - 2	II - 50	8 FT	30 FT
22	2735-1-SL2-22	8/315 - 2	II - 50	8 FT	30 FT
23	2735-1-SL2-23	8/315 - 2	II - 50	8 FT	30 FT

WIRING SCHEDULE			
X RUN NO.	CONDUIT	WIRE	COMMENTS
1	2" PVC	2-#8 (ILLUM)	SHALL BE ALUMINUM

**LEGEND**

---	APPROXIMATE RIGHT-OF-WAY	☒	TYPE 1 JUNCTION BOX
---	CONDUIT AND WIRING	☒	EX. TYPE 1 JUNCTION BOX
---	EX. CONDUIT AND WIRING	☒	EX. SERVICE CABINET
△	WIRE NOTE	⊕	EX. SIGN AND POST TO BE MAINTAINED
○	CONSTRUCTION NOTE		
⊕	LIGHT STANDARD AND LUMINAIRE		
⊕	EX. CITY-OWNED LIGHT STANDARD AND LUMINAIRE		

- NOTES**
1. JUNCTION BOXES FOR SW 316TH ST ARE INTENDED TO HAVE SPACING OF APPROXIMATELY 195 FEET AND JUNCTION BOXES FOR 7TH PL SW AND 6TH AVE SW ARE INTENDED TO BE SPACED AT 190 FEET FOR INSTALLATION OF ADDITIONAL LIGHT STANDARDS IN THE FUTURE. THE CONTRACTOR SHALL BEAR THIS IN MIND WHEN PLACING THE JUNCTION BOXES AND ATTEMPT TO ADHERE TO THE SPACING AND PLAN LOCATIONS AS MUCH AS IS PRACTICABLE. THE CONTRACTING AGENCY UNDERSTANDS THAT FIELD CONDITIONS MAY PRECLUDE THIS. ANY JUNCTION BOX SPACING GREATER THAN 250 FEET WILL NEED TO BE COORDINATED AND APPROVED BY THE ENGINEER, PRIOR TO INSTALLATION. IF FEWER JUNCTION BOXES ARE INSTALLED THAN SHOWN IN THE PLANS, THOSE BOXES SHALL BE DELIVERED TO THE KING COUNTY SIGNAL SHOP AT THE CONTRACTOR'S EXPENSE.

100% DESIGN

33325 8th Avenue South  
Federal Way, WA 98003-6325

(253) 835-2700  
www.cityoffederalway.com

DRAFTED: D. MCINTOSH  
DESIGNED: K. DAVIS, P.E.  
REVIEWED: R. PEREZ, P.E.  
APPROVED: R. PEREZ, P.E.

DRAWING VERSION / REVISION LOG		
NO.	DATE	REVISION

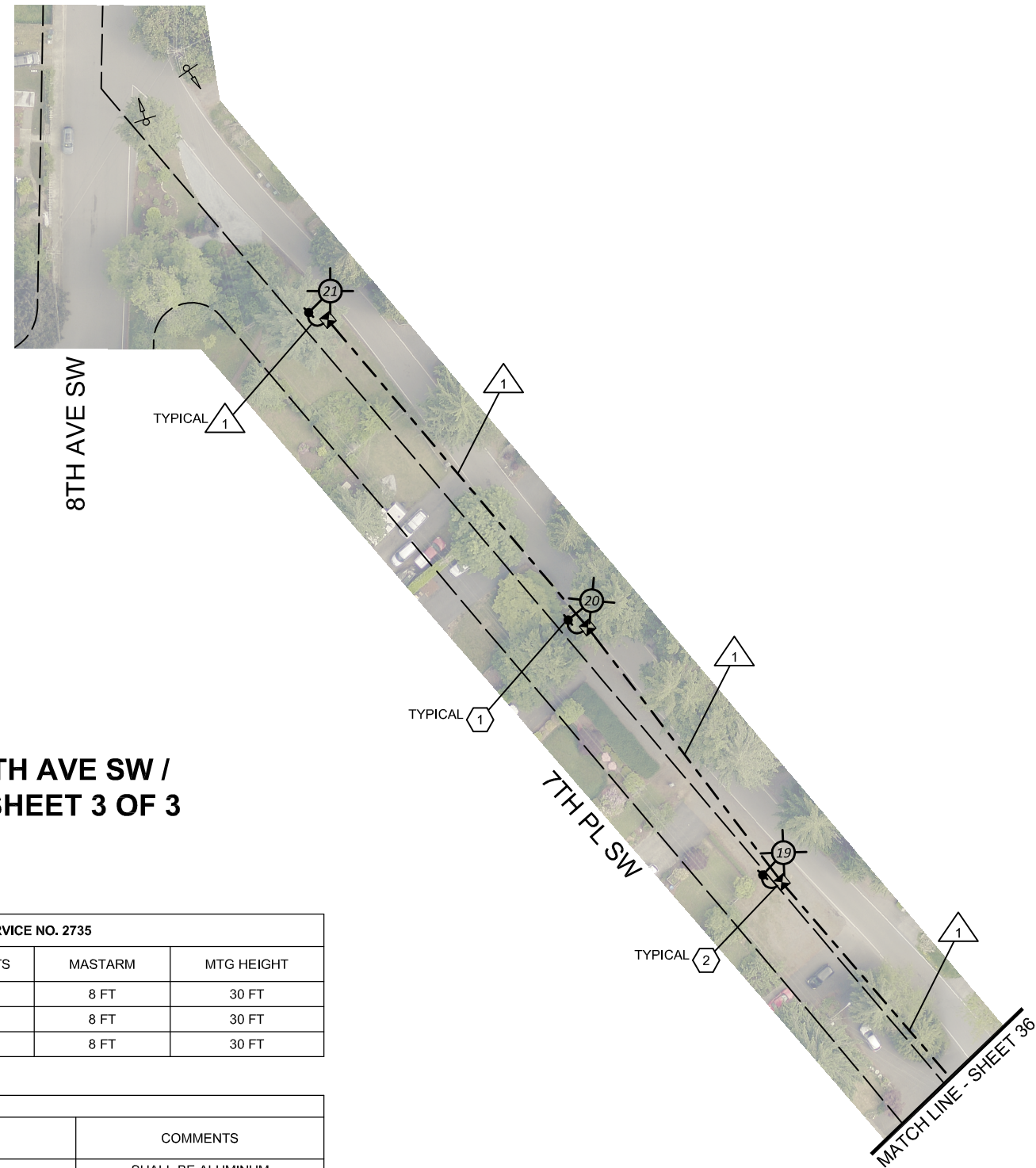
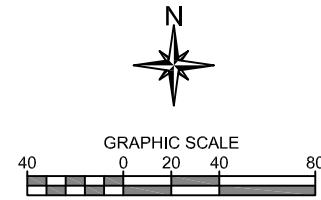
**STREET LIGHT INFILL**

**ILLUMINATION SYSTEM - GROUP B**

**7 AVE SW / 6 PL SW / 6 AVE SW / SW 316 ST / 7 PL SW**

CITY PROJECT #: 26775  
SHT. 36  
OF 76

K:\ENGINEERING DIVISION\PROJECTS\ACTIVE\26775 - Streetlight Infill\03 PE\CAD\17-520.dwg 12/12/2023 2:45 PM



**7TH AVE SW / 6TH PL SW / 6TH AVE SW / SW 316TH ST / 7TH PL SW -- SHEET 3 OF 3**

LUMINAIRE SCHEDULE			SERVICE NO. 2735		
PLAN NUMBER	ID NUMBER	SERVICE - CIRCUIT	TYPE - WATTS	MASTARM	MTG HEIGHT
19	2735-1-SL2-19	8/315 - 2	II - 60	8 FT	30 FT
20	2735-1-SL2-20	8/315 - 2	II - 60	8 FT	30 FT
21	2735-1-SL2-21	8/315 - 2	II - 60	8 FT	30 FT

WIRING SCHEDULE				
△ X RUN NO.	CONDUIT	WIRE	COMMENTS	
1	2" PVC	2-#8 (ILLUM)	SHALL BE ALUMINUM	

**NOTES**

- JUNCTION BOXES FOR 7TH PL SW ARE INTENDED TO HAVE SPACING OF APPROXIMATELY 190 FEET FOR INSTALLATION OF ADDITIONAL LIGHT STANDARDS IN THE FUTURE. THE CONTRACTOR SHALL BEAR THIS IN MIND WHEN PLACING THE JUNCTION BOXES AND ATTEMPT TO ADHERE TO THE SPACING AND PLAN LOCATIONS AS MUCH AS IS PRACTICABLE. THE CONTRACTING AGENCY UNDERSTANDS THAT FIELD CONDITIONS MAY PRECLUDE THIS. ANY JUNCTION BOX SPACING GREATER THAN 250 FEET WILL NEED TO BE COORDINATED AND APPROVED BY THE ENGINEER, PRIOR TO INSTALLATION. IF FEWER JUNCTION BOXES ARE INSTALLED THAN SHOWN IN THE PLANS, THOSE BOXES SHALL BE DELIVERED TO THE KING COUNTY SIGNAL SHOP AT THE CONTRACTOR'S EXPENSE.

**CONSTRUCTION NOTES**

- INSTALL LIGHT STANDARD FOUNDATION, POLE, DAVIT ARM, AND LUMINAIRE IN APPROXIMATE LOCATION SHOWN (3 LOCATIONS THIS SHEET) AND IN ACCORDANCE WITH MANUFACTURER RECOMMENDATIONS, SPECIAL PROVISIONS, AND THE DETAILS ON SHEET 60 AND 61.
- INSTALL TYPE 1 JUNCTION BOX (REFER TO STANDARD PLAN J-40.10 AND THE DETAILS ON SHEETS 65 AND 66) AT APPROXIMATE LOCATION SHOWN (3 BOXES THIS SHEET). SEE NOTES.

**GENERAL NOTES**

- MAINTAIN AND PROTECT EXISTING FEATURES (TREES/ SHRUBS/ VEGETATION, DITCHES, DRIVEWAYS, ETC.) WITHIN PROJECT SITE UNLESS OTHERWISE NOTED.
- UTILITIES ARE NOT SHOWN. IT IS THE CONTRACTOR'S RESPONSIBILITY TO AVOID AND PROTECT EXISTING UTILITIES AND RESOLVE CONFLICTS.
- ALL LIGHT STANDARDS AND JUNCTION BOXES SHALL BE INSTALLED WITHIN A CONCRETE PAD IN ACCORDANCE WITH THE DETAIL ON SHEET 63.
- ALL JUNCTION BOXES SHALL INCLUDE THE SYSTEM IDENTIFICATION LETTERS "LT".
- LIGHT STANDARDS SHALL BE PLACED SUCH THAT THERE IS A MINIMUM OF 6 FT FROM CENTER OF STANDARD TO EDGE LINE OR FACE OF CURB. THE CONTRACTOR SHALL NOT PLACE LIGHT STANDARDS IN FORMAL OR INFORMAL WALKING PATHS. THE CONTRACTOR SHALL NOT IMPEDE SIGHT DISTANCE, SIGN VISIBILITY, OR USPS ACCESS WITH LIGHT STANDARD PLACEMENT.
- THE LOCATIONS SHOWN OF POLES, JUNCTION BOXES, AND SERVICE CABINETS ARE APPROXIMATE AND SHOWN OVERSIZE. FIELD ADJUSTMENT MAY BE NECESSARY. SEE NOTES. ALL CONSTRUCTION AND ACTIVITIES SHALL BE LOCATED WITHIN CITY OF FEDERAL WAY PROPERTY. RIGHT-OF-WAY LINES SHOWN ARE APPROXIMATE.

**LEGEND**

- APPROXIMATE RIGHT-OF-WAY
- CONDUIT AND WIRING
- △ WIRE NOTE
- CONSTRUCTION NOTE
- ⊕ LIGHT STANDARD AND LUMINAIRE
- ⊠ TYPE 1 JUNCTION BOX
- ⊕ EX. SIGN AND POST TO BE MAINTAINED

100% DESIGN



DRAFTED: D. MCINTOSH  
 DESIGNED: K. DAVIS, P.E.  
 REVIEWED: R. PEREZ, P.E.  
 APPROVED: R. PEREZ, P.E.



DRAWING VERSION / REVISION LOG		
NO.	DATE	REVISION

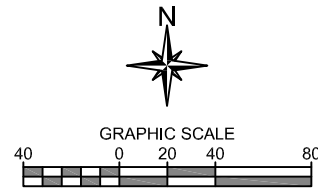
**STREET LIGHT INFILL**

**ILLUMINATION SYSTEM - GROUP B**

**7 AVE SW / 6 PL SW / 6 AVE SW / SW 316 ST / 7 PL SW**

CITY PROJECT #: 26775  
 SHT. 37  
 OF 76

K:\ENGINEERING DIVISION\PROJECTS\ACTIVE\26775 - Streetlight Infill\03 PE\ACAD\7-320.dwg 12/12/2023 2:45 PM



**CONSTRUCTION NOTES**

- ① INSTALL LIGHT STANDARD FOUNDATION, POLE, DAVIT ARM, AND LUMINAIRE IN APPROXIMATE LOCATION SHOWN (3 LOCATIONS THIS SHEET) AND IN ACCORDANCE WITH MANUFACTURER RECOMMENDATIONS, SPECIAL PROVISIONS, AND THE DETAILS ON SHEETS 60 AND 61.
- ② INSTALL TYPE 1 JUNCTION BOX (REFER TO STANDARD PLAN J-40.10 AND THE DETAILS ON SHEETS 65 AND 66) AT APPROXIMATE LOCATION SHOWN (6 BOXES THIS SHEET). SEE NOTES.

**GENERAL NOTES**

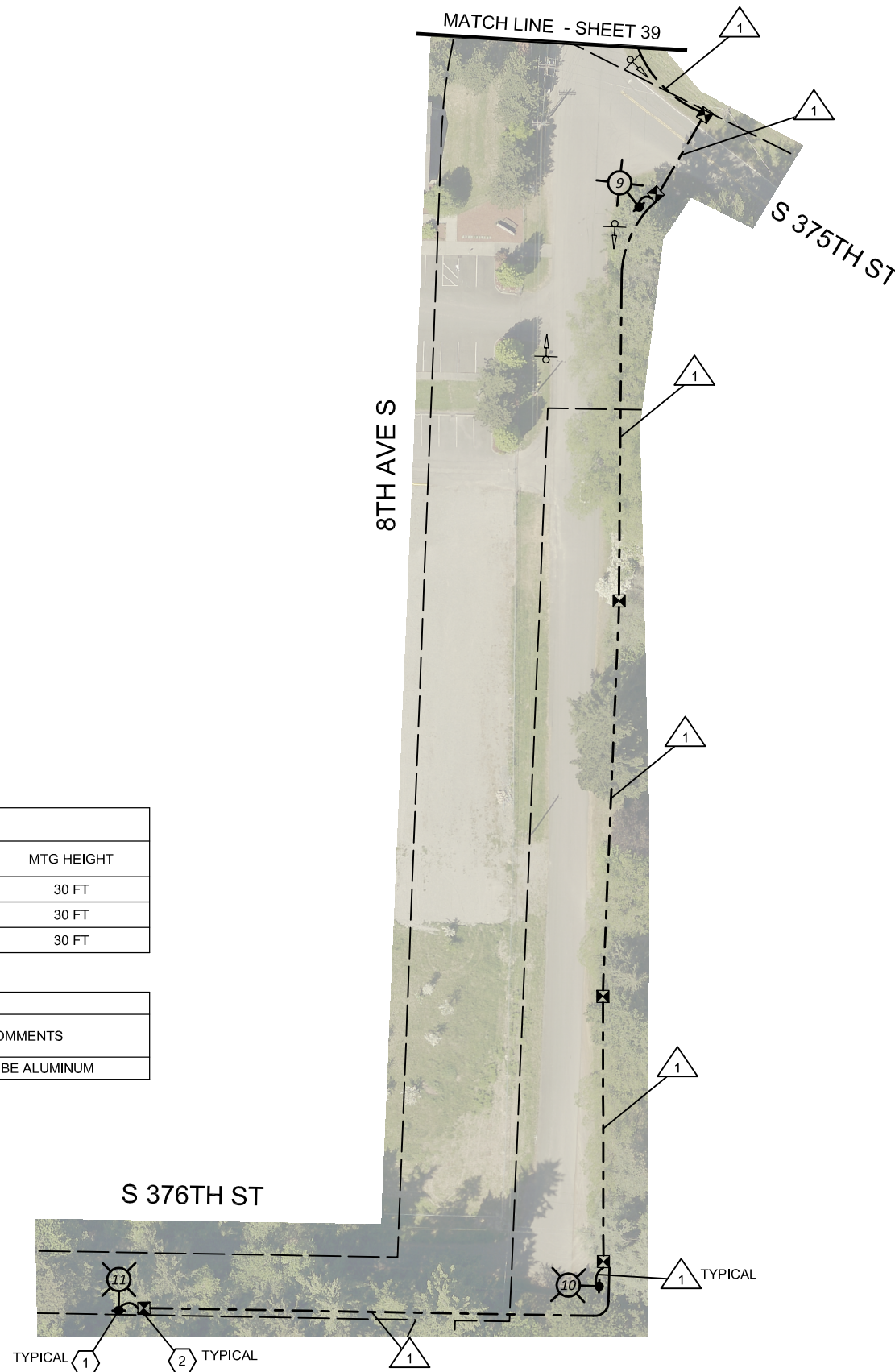
- 1. MAINTAIN AND PROTECT EXISTING FEATURES (TREES/ SHRUBS/ VEGETATION, DITCHES, DRIVEWAYS, ETC.) WITHIN PROJECT SITE UNLESS OTHERWISE NOTED.
- 2. UTILITIES ARE NOT SHOWN. IT IS THE CONTRACTOR'S RESPONSIBILITY TO AVOID AND PROTECT EXISTING UTILITIES AND RESOLVE CONFLICTS.
- 3. ALL LIGHT STANDARDS AND JUNCTION BOXES SHALL BE INSTALLED WITHIN A CONCRETE PAD IN ACCORDANCE WITH THE DETAIL ON SHEET 63.
- 4. ALL JUNCTION BOXES SHALL INCLUDE THE SYSTEM IDENTIFICATION LETTERS "LT".
- 5. LIGHT STANDARDS SHALL BE PLACED SUCH THAT THERE IS A MINIMUM OF 6 FT FROM CENTER OF STANDARD TO EDGE LINE OR FACE OF CURB. THE CONTRACTOR SHALL NOT PLACE LIGHT STANDARDS IN FORMAL OR INFORMAL WALKING PATHS. THE CONTRACTOR SHALL NOT IMPEDE SIGHT DISTANCE, SIGN VISIBILITY, OR USPS ACCESS WITH LIGHT STANDARD PLACEMENT.
- 6. THE LOCATIONS SHOWN OF POLES, JUNCTION BOXES, AND SERVICE CABINETS ARE APPROXIMATE AND SHOWN OVERSIZE. FIELD ADJUSTMENT MAY BE NECESSARY. SEE NOTES. ALL CONSTRUCTION AND ACTIVITIES SHALL BE LOCATED WITHIN CITY OF FEDERAL WAY PROPERTY. RIGHT-OF-WAY LINES SHOWN ARE APPROXIMATE.

LUMINAIRE SCHEDULE			SERVICE NO. 6247		
PLAN NUMBER	ID NUMBER	SERVICE - CIRCUIT	TYPE - WATTS	MASTARM	MTG HEIGHT
9	6247-1-SL3-9	10/372 - 3	II - 50	8 FT	30 FT
10	6247-1-SL3-10	10/372 - 3	II - 50	8 FT	30 FT
11	6247-1-SL3-11	10/372 - 3	II - 50	8 FT	30 FT

WIRING SCHEDULE				
X	RUN NO.	CONDUIT	WIRE	COMMENTS
	1	2" PVC	2-#8 (ILLUM)	SHALL BE ALUMINUM

**NOTES**

- 1. JUNCTION BOXES FOR 8TH AVE S AND S 376TH ST ARE INTENDED TO HAVE SPACING OF APPROXIMATELY 195 FEET FOR INSTALLATION OF ADDITIONAL LIGHT STANDARDS IN THE FUTURE. THE CONTRACTOR SHALL BEAR THIS IN MIND WHEN PLACING THE JUNCTION BOXES AND ATTEMPT TO ADHERE TO THE SPACING AND PLAN LOCATIONS AS MUCH AS IS PRACTICABLE. THE CONTRACTING AGENCY UNDERSTANDS THAT FIELD CONDITIONS MAY PRECLUDE THIS. ANY JUNCTION BOX SPACING GREATER THAN 250 FEET WILL NEED TO BE COORDINATED AND APPROVED BY THE ENGINEER, PRIOR TO INSTALLATION. IF FEWER JUNCTION BOXES ARE INSTALLED THAN SHOWN IN THE PLANS, THOSE BOXES SHALL BE DELIVERED TO THE KING COUNTY SIGNAL SHOP AT THE CONTRACTOR'S EXPENSE.



**LEGEND**

---	APPROXIMATE RIGHT-OF-WAY	⊠	TYPE 1 JUNCTION BOX
---	CONDUIT AND WIRING	⊕	EX. SIGN AND POST TO BE MAINTAINED
△	WIRE NOTE		
⬡	CONSTRUCTION NOTE		
⊙	LIGHT STANDARD AND LUMINAIRE		

100% DESIGN

DRAFTED: D. MCINTOSH  
 DESIGNED: K. DAVIS, P.E.  
 REVIEWED: R. PEREZ, P.E.  
 APPROVED: R. PEREZ, P.E.

**DRAWING VERSION / REVISION LOG**

NO.	DATE	REVISION

**STREET LIGHT INFILL**  
**ILLUMINATION SYSTEM - GROUP B**  
**8 AVE S - S 376 ST TO S 373 ST**

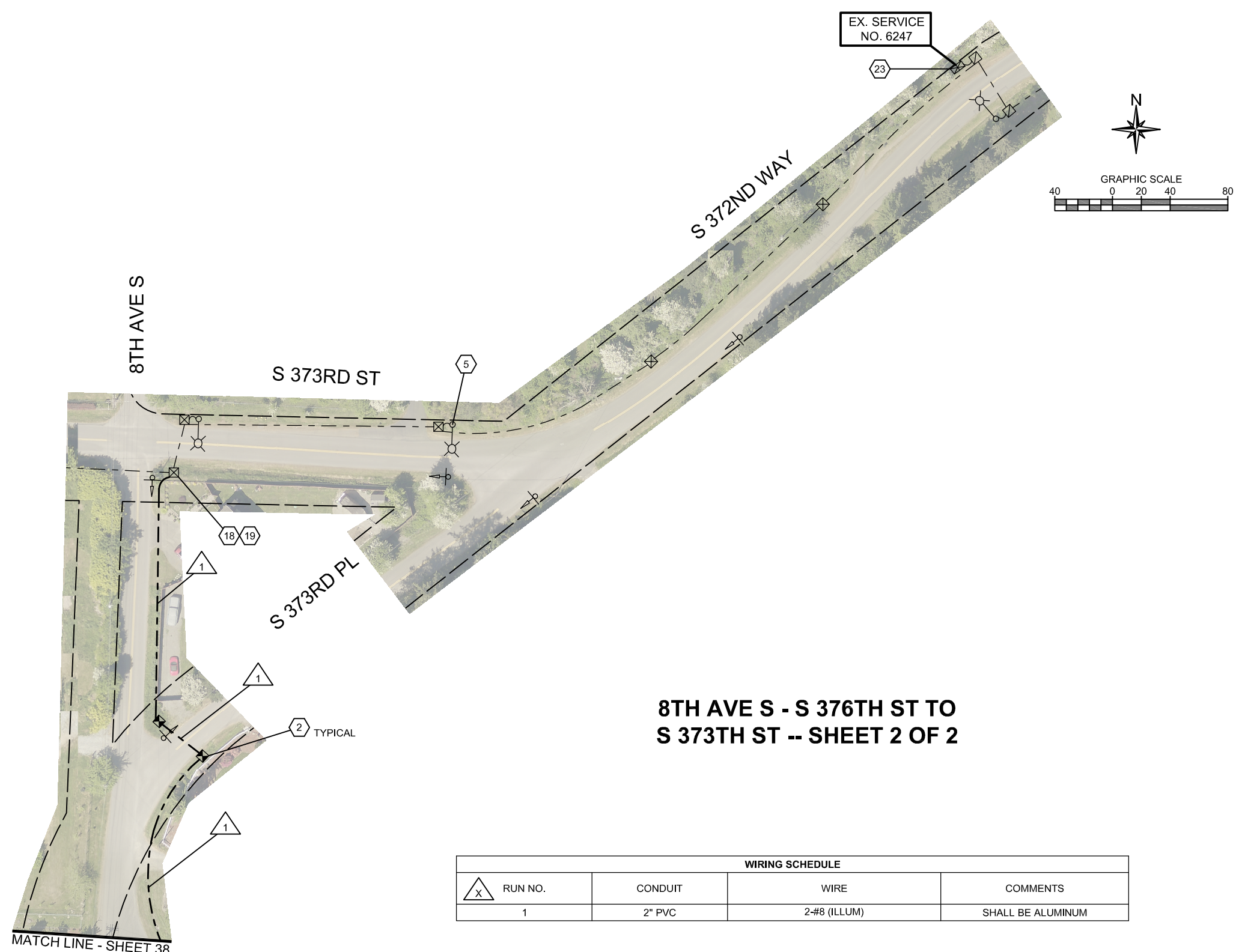
CITY PROJECT #:  
**26775**

SHT. **38**  
 OF **76**

K:\ENGINEERING DIVISION\PROJECTS\ACTIVE\26775 - Streetlight Infill\03 PE\ACAD\376-6-3.dwg 12/12/2023 2:47 PM



K:\ENGINEERING DIVISION\PROJECTS\ACTIVE\26775 - Streetlight Infill\03 PEACAD\0376-6-6.dwg 12/12/2023 2:48 PM



**8TH AVE S - S 376TH ST TO S 373TH ST -- SHEET 2 OF 2**

**CONSTRUCTION NOTES**

- 2 INSTALL TYPE 1 JUNCTION BOX (REFER TO STANDARD PLAN J-40.10 AND THE DETAILS ON SHEETS 65 AND 66) AT APPROXIMATE LOCATION SHOWN (2 LOCATIONS THIS SHEET). SEE NOTES.
- 5 MAINTAIN AND PROTECT EXISTING ILLUMINATION SYSTEM (CONSTRUCTED AS A PART OF GROUP A - SEE SHEETS 27 AND 28 FOR DETAILS).
- 18 EXISTING JUNCTION BOX (INSTALLED AS A PART OF GROUP A).
- 19 SPLICE NEW CONDUCTOR TO EXISTING ILLUMINATION CONDUCTORS (INSTALLED AS A PART OF GROUP A) COILED IN JUNCTION BOX.
- 23 EXISTING SERVICE CABINET (INSTALLED AS A PART OF GROUP A) TO BE USED FOR PROPOSED LIGHT STANDARDS FOR 8 AVE S - S 376 ST TO S 373 ST.

**GENERAL NOTES**

1. MAINTAIN AND PROTECT EXISTING FEATURES (TREES/ SHRUBS/ VEGETATION, DITCHES, DRIVEWAYS, ETC.) WITHIN PROJECT SITE UNLESS OTHERWISE NOTED.
2. UTILITIES ARE NOT SHOWN. IT IS THE CONTRACTOR'S RESPONSIBILITY TO AVOID AND PROTECT EXISTING UTILITIES AND RESOLVE CONFLICTS.
3. ALL LIGHT STANDARDS AND JUNCTION BOXES SHALL BE INSTALLED WITHIN A CONCRETE PAD IN ACCORDANCE WITH THE DETAIL ON SHEET 63.
4. ALL JUNCTION BOXES SHALL INCLUDE THE SYSTEM IDENTIFICATION LETTERS "LT".
5. LIGHT STANDARDS SHALL BE PLACED SUCH THAT THERE IS A MINIMUM OF 6 FT FROM CENTER OF STANDARD TO EDGE LINE OR FACE OF CURB. THE CONTRACTOR SHALL NOT PLACE LIGHT STANDARDS IN FORMAL OR INFORMAL WALKING PATHS. THE CONTRACTOR SHALL NOT IMPEDE SIGHT DISTANCE, SIGN VISIBILITY, OR USPS ACCESS WITH LIGHT STANDARD PLACEMENT.
6. THE LOCATIONS SHOWN OF POLES, JUNCTION BOXES, AND SERVICE CABINETS ARE APPROXIMATE AND SHOWN OVERSIZE. FIELD ADJUSTMENT MAY BE NECESSARY. SEE NOTES. ALL CONSTRUCTION AND ACTIVITIES SHALL BE LOCATED WITHIN CITY OF FEDERAL WAY PROPERTY. RIGHT-OF-WAY LINES SHOWN ARE APPROXIMATE.

WIRING SCHEDULE				
△ X	RUN NO.	CONDUIT	WIRE	COMMENTS
	1	2" PVC	2-#8 (ILLUM)	SHALL BE ALUMINUM

**NOTES**

1. JUNCTION BOXES FOR 8TH AVE S ARE INTENDED TO HAVE SPACING OF APPROXIMATELY 195 FEET FOR INSTALLATION OF ADDITIONAL LIGHT STANDARDS IN THE FUTURE. THE CONTRACTOR SHALL BEAR THIS IN MIND WHEN PLACING THE JUNCTION BOXES AND ATTEMPT TO ADHERE TO THE SPACING AND PLAN LOCATIONS AS MUCH AS IS PRACTICABLE. THE CONTRACTING AGENCY UNDERSTANDS THAT FIELD CONDITIONS MAY PRECLUDE THIS. ANY JUNCTION BOX SPACING GREATER THAN 250 FEET WILL NEED TO BE COORDINATED AND APPROVED BY THE ENGINEER, PRIOR TO INSTALLATION. IF FEWER JUNCTION BOXES ARE INSTALLED THAN SHOWN IN THE PLANS, THOSE BOXES SHALL BE DELIVERED TO THE KING COUNTY SIGNAL SHOP AT THE CONTRACTOR'S EXPENSE.

**LEGEND**

- APPROXIMATE RIGHT-OF-WAY
- CONDUIT AND WIRING
- EX. CONDUIT AND WIRING (INSTALLED IN GROUP A)
- △ WIRE NOTE
- CONSTRUCTION NOTE
- ⊕ EX. CITY-OWNED LIGHT STANDARD AND LUMINAIRE
- ⊠ TYPE 1 JUNCTION BOX
- ⊞ EX. TYPE 1 JUNCTION BOX
- ⊡ EX. TYPE 2 JUNCTION BOX
- ⊞ EX. SERVICE CABINET
- ⊕ EX. SIGN AND POST TO BE MAINTAINED

100% DESIGN

**CITY OF Federal Way**  
Centered on Opportunity  
33325 8th Avenue South  
Federal Way, WA 98003-6325  
(253) 835-2700  
www.cityoffederalway.com

**811**  
Know what's below.  
Call 811 before you dig.

DRAFTED: D. MCINTOSH  
DESIGNED: K. DAVIS, P.E.  
REVIEWED: R. PEREZ, P.E.  
APPROVED: R. PEREZ, P.E.



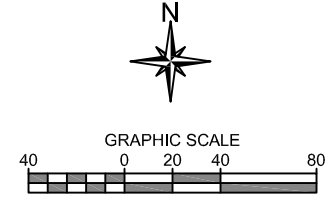
DRAWING VERSION / REVISION LOG		
NO.	DATE	REVISION

**STREET LIGHT INFILL**  
**ILLUMINATION SYSTEM - GROUP B**  
**8 AVE S - S 376 ST TO S 373 ST**

CITY PROJECT #:  
**26775**  
SHT. **39**  
OF **76**

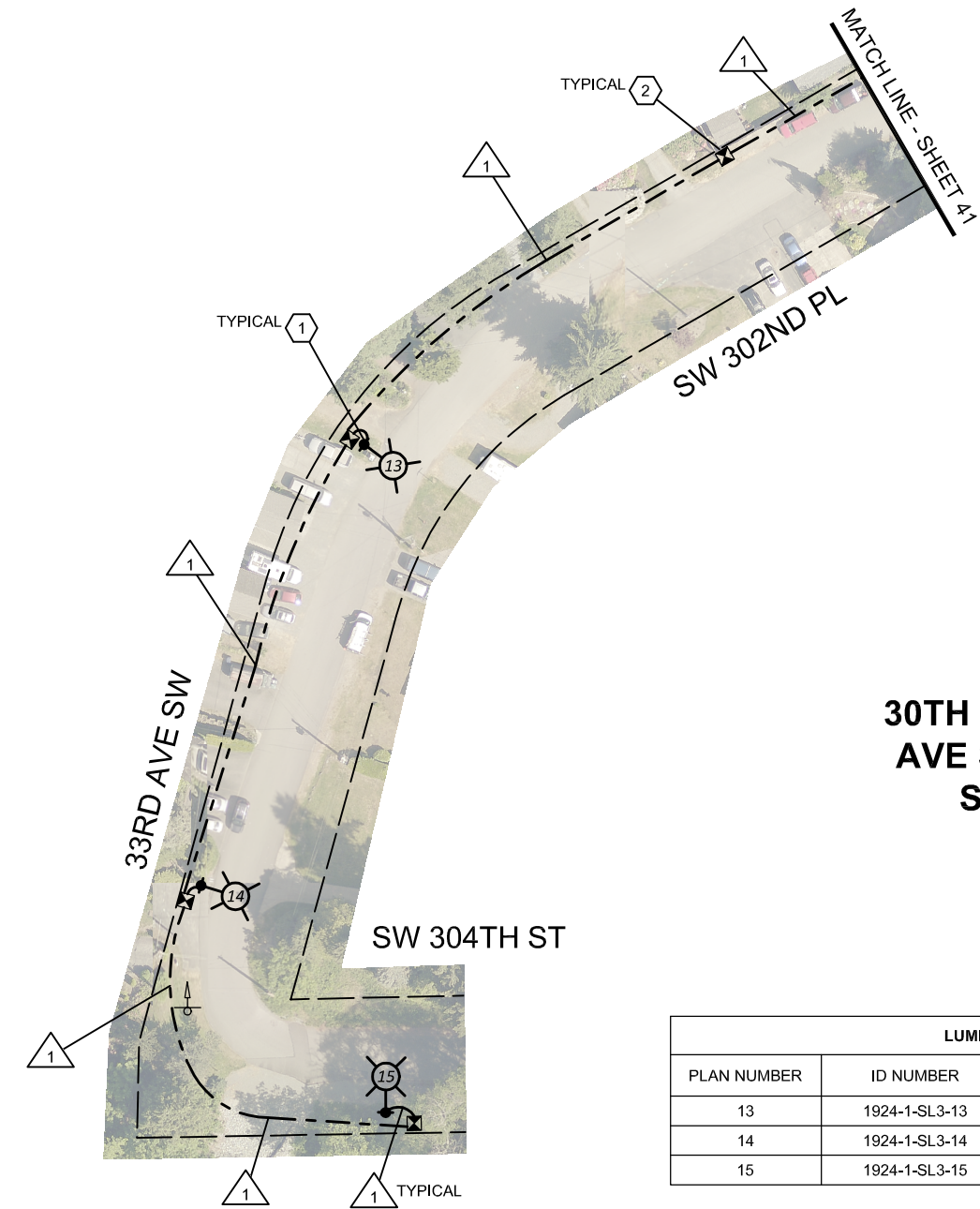
**CONSTRUCTION NOTES**

- ① INSTALL LIGHT STANDARD FOUNDATION, POLE, DAVIT ARM, AND LUMINAIRE IN APPROXIMATE LOCATION SHOWN (3 LOCATIONS THIS SHEET) AND IN ACCORDANCE WITH MANUFACTURER RECOMMENDATIONS, SPECIAL PROVISIONS, AND THE DETAILS ON SHEETS 60 AND 61.
- ② INSTALL TYPE 1 JUNCTION BOX (REFER TO STANDARD PLAN J-40.10 AND THE DETAILS ON SHEETS 65 AND 66) AT APPROXIMATE LOCATION SHOWN (4 BOXES THIS SHEET). SEE NOTES.



**GENERAL NOTES**

- 1. MAINTAIN AND PROTECT EXISTING FEATURES (TREES/ SHRUBS/ VEGETATION, DITCHES, DRIVEWAYS, ETC.) WITHIN PROJECT SITE UNLESS OTHERWISE NOTED.
- 2. UTILITIES ARE NOT SHOWN. IT IS THE CONTRACTOR'S RESPONSIBILITY TO AVOID AND PROTECT EXISTING UTILITIES AND RESOLVE CONFLICTS.
- 3. ALL LIGHT STANDARDS AND JUNCTION BOXES SHALL BE INSTALLED WITHIN A CONCRETE PAD IN ACCORDANCE WITH THE DETAIL ON SHEET 63.
- 4. ALL JUNCTION BOXES SHALL INCLUDE THE SYSTEM IDENTIFICATION LETTERS "LT".
- 5. LIGHT STANDARDS SHALL BE PLACED SUCH THAT THERE IS A MINIMUM OF 6 FT FROM CENTER OF STANDARD TO EDGE LINE OR FACE OF CURB. THE CONTRACTOR SHALL NOT PLACE LIGHT STANDARDS IN FORMAL OR INFORMAL WALKING PATHS. THE CONTRACTOR SHALL NOT IMPEDE SIGHT DISTANCE, SIGN VISIBILITY, OR USPS ACCESS WITH LIGHT STANDARD PLACEMENT.
- 6. THE LOCATIONS SHOWN OF POLES, JUNCTION BOXES, AND SERVICE CABINETS ARE APPROXIMATE AND SHOWN OVERSIZE. FIELD ADJUSTMENT MAY BE NECESSARY. SEE NOTES. ALL CONSTRUCTION AND ACTIVITIES SHALL BE LOCATED WITHIN CITY OF FEDERAL WAY PROPERTY. RIGHT-OF-WAY LINES SHOWN ARE APPROXIMATE.



**30TH AVE SW / SW 304TH ST / 33RD AVE SW / SW 302 PL / 31 AVE SW / SW 300 PL -- SHEET 1 OF 4**

LUMINAIRE SCHEDULE			SERVICE NO. 1924		
PLAN NUMBER	ID NUMBER	SERVICE - CIRCUIT	TYPE - WATTS	MASTARM	MTG HEIGHT
13	1924-1-SL3-13	30/302 - 3	II - 50	8 FT	30 FT
14	1924-1-SL3-14	30/302 - 3	II - 50	8 FT	30 FT
15	1924-1-SL3-15	30/302 - 3	II - 50	8 FT	30 FT

WIRING SCHEDULE			
△ X RUN NO.	CONDUIT	WIRE	COMMENTS
1	2" PVC	2-#8 (ILLUM)	SHALL BE ALUMINUM

**NOTES**

- 1. JUNCTION BOXES FOR SW 304TH ST, 33RD AVE SW, AND SW 302 PL ARE INTENDED TO HAVE SPACING OF APPROXIMATELY 195 FEET FOR INSTALLATION OF ADDITIONAL LIGHT STANDARDS IN THE FUTURE. THE CONTRACTOR SHALL BEAR THIS IN MIND WHEN PLACING THE JUNCTION BOXES AND ATTEMPT TO ADHERE TO THE SPACING AND PLAN LOCATIONS AS MUCH AS IS PRACTICABLE. THE CONTRACTING AGENCY UNDERSTANDS THAT FIELD CONDITIONS MAY PRECLUDE THIS. ANY JUNCTION BOX SPACING GREATER THAN 250 FEET WILL NEED TO BE COORDINATED AND APPROVED BY THE ENGINEER, PRIOR TO INSTALLATION. IF FEWER JUNCTION BOXES ARE INSTALLED THAN SHOWN IN THE PLANS, THOSE BOXES SHALL BE DELIVERED TO THE KING COUNTY SIGNAL SHOP AT THE CONTRACTOR'S EXPENSE.

**LEGEND**

- APPROXIMATE RIGHT-OF-WAY
- CONDUIT AND WIRING
- △ WIRE NOTE
- CONSTRUCTION NOTE
- ⊕ LIGHT STANDARD AND LUMINAIRE
- ⊠ TYPE 1 JUNCTION BOX
- ⊕ EX. SIGN AND POST TO BE MAINTAINED

100% DESIGN

**CITY OF Federal Way**  
Centered on Opportunity  
33325 8th Avenue South  
Federal Way, WA 98003-6325  
(253) 835-2700  
www.cityoffederalway.com

**811**  
Know what's below.  
Call 811 before you dig.

DRAFTED: D. MCINTOSH  
DESIGNED: K. DAVIS, P.E.  
REVIEWED: R. PEREZ, P.E.  
APPROVED: R. PEREZ, P.E.



DRAWING VERSION / REVISION LOG		
NO.	DATE	REVISION

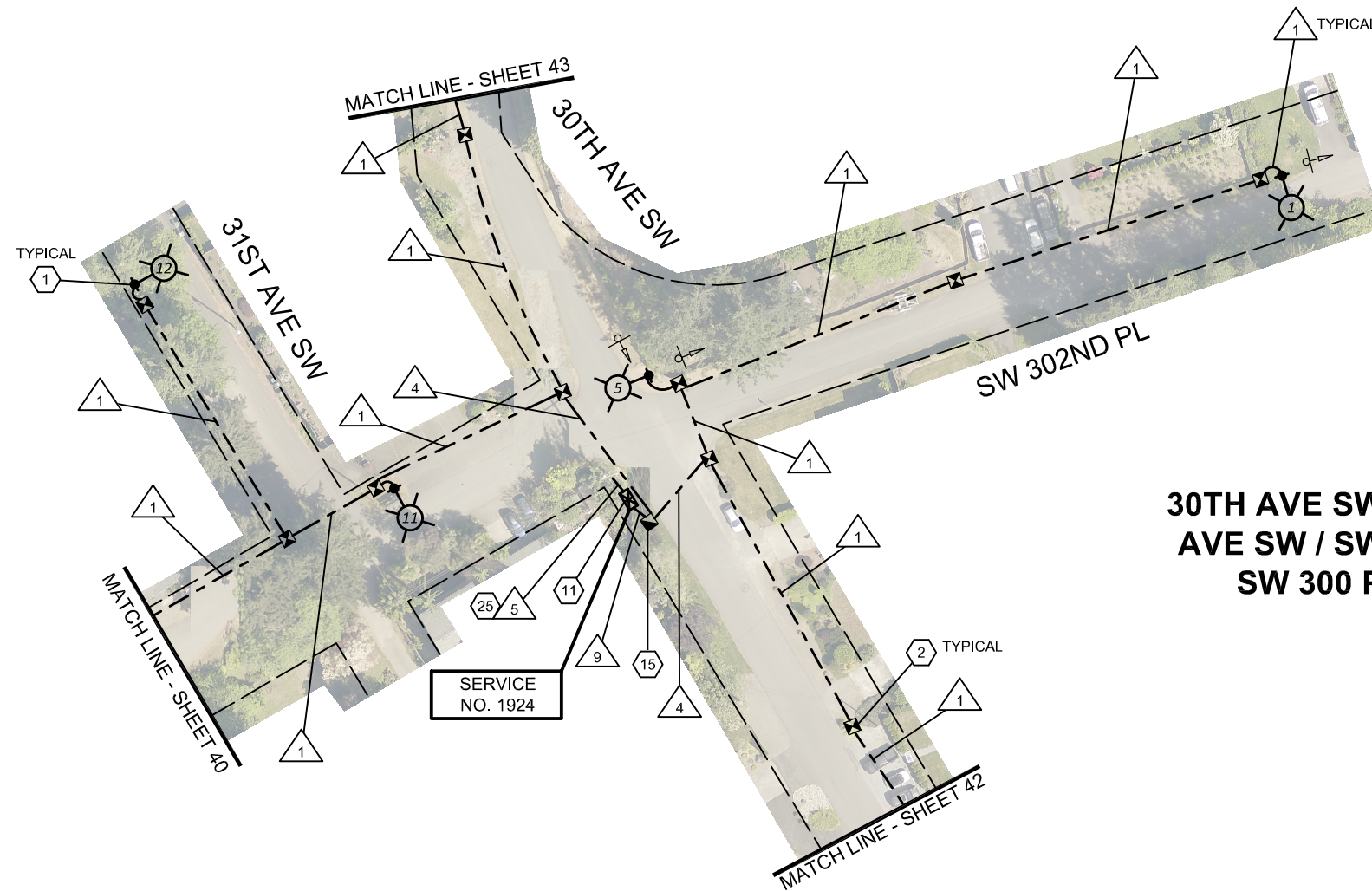
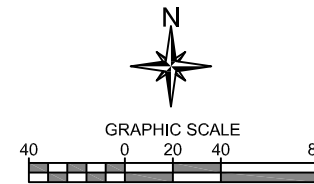
**STREET LIGHT INFILL**  
**ILLUMINATION SYSTEM - GROUP C**  
30 AVE SW / SW 304 ST / 33 AVE SW / SW 302 PL / 31 AVE SW / SW 300 PL

CITY PROJECT #:  
**26775**  
SHT. 40  
OF 76

K:\ENGINEERING DIVISION\PROJECTS\ACTIVE\26775 - Streetlight Infill\03 PE\ACAD\30 NO DASH FT RD.dwg 12/12/2023 2:50 PM

LUMINAIRE SCHEDULE			SERVICE NO. 1924		
PLAN NUMBER	ID NUMBER	SERVICE - CIRCUIT	TYPE - WATTS	MASTARM	MTG HEIGHT
1	1924-1-SL1-1	30/302 - 1	II - 50	8 FT	30 FT
5	1924-1-SL1-5	30/302 - 1	II - 50	8 FT	30 FT
11	1924-1-SL3-11	30/302 - 3	II - 50	8 FT	30 FT
12	1924-1-SL3-12	30/302 - 3	II - 50	8 FT	30 FT

WIRING SCHEDULE				
X RUN NO.	CONDUIT	WIRE	COMMENTS	
1	2" PVC	2-#8 (ILLUM)	SHALL BE ALUMINUM	
4	2" PVC	4-#8 (ILLUM)	SHALL BE ALUMINUM	
	2" PVC	SPARE	WITH GROUND AND PULL TAPE	
5	PER PSE (2" MINIMUM)	PER PSE (3-#6 MINIMUM)	PER PSE	
9	2" PVC	6-#8 (ILLUM)	SHALL BE ALUMINUM	
	2" PVC	SPARE	WITH GROUND AND PULL TAPE	



**30TH AVE SW / SW 304TH ST / 33RD  
AVE SW / SW 302 PL / 31 AVE SW /  
SW 300 PL -- SHEET 2 OF 4**

**CONSTRUCTION NOTES**

- ① INSTALL LIGHT STANDARD FOUNDATION, POLE, DAVIT ARM, AND LUMINAIRE IN APPROXIMATE LOCATION SHOWN (4 LOCATIONS THIS SHEET) AND IN ACCORDANCE WITH MANUFACTURER RECOMMENDATIONS, SPECIAL PROVISIONS, AND THE DETAILS ON SHEETS 60 AND 61.
- ② INSTALL TYPE 1 JUNCTION BOX (REFER TO STANDARD PLAN J-40.10 AND THE DETAILS ON SHEETS 65 AND 66) AT APPROXIMATE LOCATION SHOWN (10 BOXES THIS SHEET). SEE NOTES.
- ⑪ INSTALL FOUNDATION AND SERVICE CABINET IN APPROXIMATE LOCATION SHOWN (DOORS FACING SW 302ND ST) AND IN ACCORDANCE WITH THE DETAILS ON SHEETS 67 AND 68.
- ⑮ INSTALL TYPE 2 JUNCTION BOX (REFER TO STANDARD PLAN J-40.10 AND THE DETAILS ON SHEETS 65 AND 66) AT APPROXIMATE LOCATION SHOWN (1 BOX THIS SHEET). SEE NOTES.
- ⑳ COORDINATE WITH SERVING UTILITY FOR ELECTRICAL CONNECTION POINT. RUN SERVICE CONDUCTOR IN ACCORDANCE WITH POWER UTILITY AND CITY OF FEDERAL WAY PERMIT REQUIREMENTS. CONTRACTOR SHALL SUPPLY ANY CONDUIT AND FITTINGS, JUNCTION BOXES, AND HARDWARE REQUIRED BY THE SERVING UTILITY FOR SERVICE.

**GENERAL NOTES**

- 1. MAINTAIN AND PROTECT EXISTING FEATURES (TREES/ SHRUBS/ VEGETATION, DITCHES, DRIVEWAYS, ETC.) WITHIN PROJECT SITE UNLESS OTHERWISE NOTED.
- 2. UTILITIES ARE NOT SHOWN. IT IS THE CONTRACTOR'S RESPONSIBILITY TO AVOID AND PROTECT EXISTING UTILITIES AND RESOLVE CONFLICTS.
- 3. ALL LIGHT STANDARDS AND JUNCTION BOXES SHALL BE INSTALLED WITHIN A CONCRETE PAD IN ACCORDANCE WITH THE DETAIL ON SHEET 63.
- 4. ALL JUNCTION BOXES SHALL INCLUDE THE SYSTEM IDENTIFICATION LETTERS "LT".
- 5. LIGHT STANDARDS SHALL BE PLACED SUCH THAT THERE IS A MINIMUM OF 6 FT FROM CENTER OF STANDARD TO EDGE LINE OR FACE OF CURB. THE CONTRACTOR SHALL NOT PLACE LIGHT STANDARDS IN FORMAL OR INFORMAL WALKING PATHS. THE CONTRACTOR SHALL NOT IMPEDE SIGHT DISTANCE, SIGN VISIBILITY, OR USPS ACCESS WITH LIGHT STANDARD PLACEMENT.
- 6. THE LOCATIONS SHOWN OF POLES, JUNCTION BOXES, AND SERVICE CABINETS ARE APPROXIMATE AND SHOWN OVERSIZE. FIELD ADJUSTMENT MAY BE NECESSARY. SEE NOTES. ALL CONSTRUCTION AND ACTIVITIES SHALL BE LOCATED WITHIN CITY OF FEDERAL WAY PROPERTY. RIGHT-OF-WAY LINES SHOWN ARE APPROXIMATE.

**NOTES**

- 1. JUNCTION BOXES FOR 30TH AVE SW, SW 302 PL, AND 31 AVE SW ARE INTENDED TO HAVE SPACING OF APPROXIMATELY 195 FEET FOR INSTALLATION OF ADDITIONAL LIGHT STANDARDS IN THE FUTURE. THE CONTRACTOR SHALL BEAR THIS IN MIND WHEN PLACING THE JUNCTION BOXES AND ATTEMPT TO ADHERE TO THE SPACING AND PLAN LOCATIONS AS MUCH AS IS PRACTICABLE. THE CONTRACTING AGENCY UNDERSTANDS THAT FIELD CONDITIONS MAY PRECLUDE THIS. ANY JUNCTION BOX SPACING GREATER THAN 250 FEET WILL NEED TO BE COORDINATED AND APPROVED BY THE ENGINEER, PRIOR TO INSTALLATION. IF FEWER JUNCTION BOXES ARE INSTALLED THAN SHOWN IN THE PLANS, THOSE BOXES SHALL BE DELIVERED TO THE KING COUNTY SIGNAL SHOP AT THE CONTRACTOR'S EXPENSE.

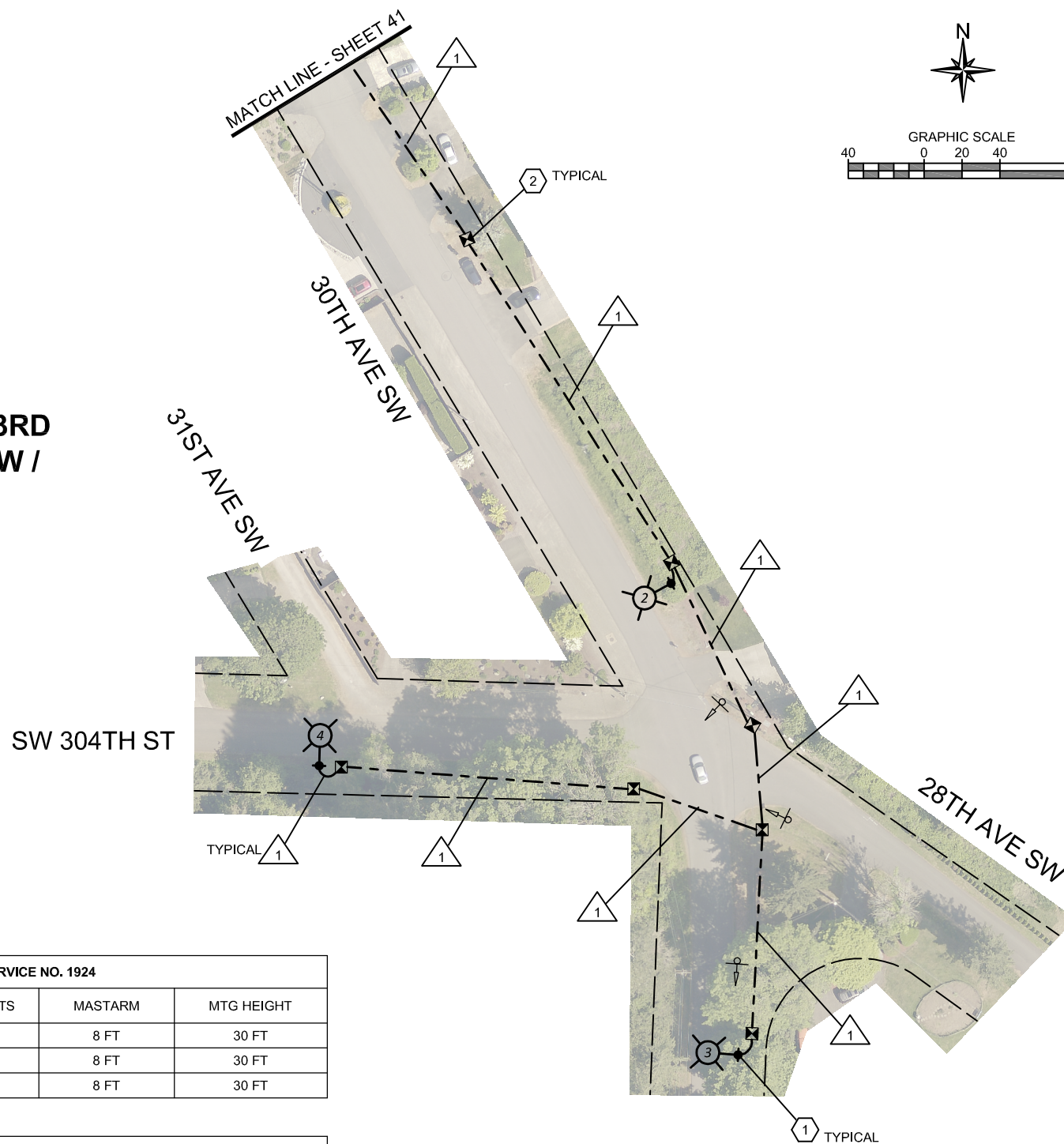
**LEGEND**

---	APPROXIMATE RIGHT-OF-WAY	⊠	TYPE 1 JUNCTION BOX
---	CONDUIT AND WIRING	⊠	TYPE 8 JUNCTION BOX
△	WIRE NOTE	⊠	SERVICE CABINET
⊠	CONSTRUCTION NOTE	⊠	EX. SIGN AND POST TO BE MAINTAINED
⊠	LIGHT STANDARD AND LUMINAIRE		

100% DESIGN

<p><b>CITY OF Federal Way</b> Centered on Opportunity</p> <p>33325 8th Avenue South Federal Way, WA 98003-6325</p> <p>(253) 835-2700 www.cityoffederalway.com</p>	<p>Know what's below. Call 811 before you dig.</p>	<p>DRAFTED: D. MCINTOSH</p> <p>DESIGNED: K. DAVIS, P.E.</p> <p>REVIEWED: R. PEREZ, P.E.</p> <p>APPROVED: R. PEREZ, P.E.</p>	<p>RICHARD A. PEREZ STATE OF WASHINGTON REGISTERED PROFESSIONAL ENGINEER 12/12/2023</p>	<p>DRAWING VERSION / REVISION LOG</p> <table border="1" style="width: 100%; border-collapse: collapse;"> <thead> <tr> <th>NO.</th> <th>DATE</th> <th>REVISION</th> </tr> </thead> <tbody> <tr><td> </td><td> </td><td> </td></tr> <tr><td> </td><td> </td><td> </td></tr> <tr><td> </td><td> </td><td> </td></tr> </tbody> </table>	NO.	DATE	REVISION										<p><b>STREET LIGHT INFILL</b></p> <p><b>ILLUMINATION SYSTEM - GROUP C</b></p> <p>30 AVE SW / SW 304 ST / 33 AVE SW / SW 302 PL / 31 AVE SW / SW 300 PL</p>	<p>CITY PROJECT #: <b>26775</b></p> <p>SHT. 41 OF 76</p>
				NO.	DATE	REVISION												
				<p>100% DESIGN</p>														

**30TH AVE SW / SW 304TH ST / 33RD AVE SW / SW 302 PL / 31 AVE SW / SW 300 PL -- SHEET 3 OF 4**



**CONSTRUCTION NOTES**

- 1. INSTALL LIGHT STANDARD FOUNDATION, POLE, DAVIT ARM, AND LUMINAIRE IN APPROXIMATE LOCATION SHOWN (3 LOCATIONS THIS SHEET) AND IN ACCORDANCE WITH MANUFACTURER RECOMMENDATIONS, SPECIAL PROVISIONS, AND THE DETAILS ON SHEETS 60 AND 61.
- 2. INSTALL TYPE 1 JUNCTION BOX (REFER TO STANDARD PLAN J-40.10 AND THE DETAILS ON SHEETS 65 AND 66) AT APPROXIMATE LOCATION SHOWN (7 BOXES THIS SHEET). SEE NOTES.

**GENERAL NOTES**

- 1. MAINTAIN AND PROTECT EXISTING FEATURES (TREES/ SHRUBS/ VEGETATION, DITCHES, DRIVEWAYS, ETC.) WITHIN PROJECT SITE UNLESS OTHERWISE NOTED.
- 2. UTILITIES ARE NOT SHOWN. IT IS THE CONTRACTOR'S RESPONSIBILITY TO AVOID AND PROTECT EXISTING UTILITIES AND RESOLVE CONFLICTS.
- 3. ALL LIGHT STANDARDS AND JUNCTION BOXES SHALL BE INSTALLED WITHIN A CONCRETE PAD IN ACCORDANCE WITH THE DETAIL ON SHEET 63.
- 4. ALL JUNCTION BOXES SHALL INCLUDE THE SYSTEM IDENTIFICATION LETTERS "LT".
- 5. LIGHT STANDARDS SHALL BE PLACED SUCH THAT THERE IS A MINIMUM OF 6 FT FROM CENTER OF STANDARD TO EDGE LINE OR FACE OF CURB. THE CONTRACTOR SHALL NOT PLACE LIGHT STANDARDS IN FORMAL OR INFORMAL WALKING PATHS. THE CONTRACTOR SHALL NOT IMPEDE SIGHT DISTANCE, SIGN VISIBILITY, OR USPS ACCESS WITH LIGHT STANDARD PLACEMENT.
- 6. THE LOCATIONS SHOWN OF POLES, JUNCTION BOXES, AND SERVICE CABINETS ARE APPROXIMATE AND SHOWN OVERSIZE. FIELD ADJUSTMENT MAY BE NECESSARY. SEE NOTES. ALL CONSTRUCTION AND ACTIVITIES SHALL BE LOCATED WITHIN CITY OF FEDERAL WAY PROPERTY. RIGHT-OF-WAY LINES SHOWN ARE APPROXIMATE.

LUMINAIRE SCHEDULE		SERVICE NO. 1924			
PLAN NUMBER	ID NUMBER	SERVICE - CIRCUIT	TYPE - WATTS	MASTARM	MTG HEIGHT
2	1924-1-SL1-2	30/302 - 1	II - 50	8 FT	30 FT
3	1924-1-SL1-3	30/302 - 1	II - 50	8 FT	30 FT
4	1924-1-SL1-4	30/302 - 1	II - 50	8 FT	30 FT

WIRING SCHEDULE				
△ X	RUN NO.	CONDUIT	WIRE	COMMENTS
	1	2" PVC	2-#8 (ILLUM)	SHALL BE ALUMINUM

**NOTES**

- 1. JUNCTION BOXES FOR 30TH AVE SW AND SW 304TH ST ARE INTENDED TO HAVE SPACING OF APPROXIMATELY 195 FEET FOR INSTALLATION OF ADDITIONAL LIGHT STANDARDS IN THE FUTURE. THE CONTRACTOR SHALL BEAR THIS IN MIND WHEN PLACING THE JUNCTION BOXES AND ATTEMPT TO ADHERE TO THE SPACING AND PLAN LOCATIONS AS MUCH AS IS PRACTICABLE. THE CONTRACTING AGENCY UNDERSTANDS THAT FIELD CONDITIONS MAY PRECLUDE THIS. ANY JUNCTION BOX SPACING GREATER THAN 250 FEET WILL NEED TO BE COORDINATED AND APPROVED BY THE ENGINEER, PRIOR TO INSTALLATION. IF FEWER JUNCTION BOXES ARE INSTALLED THAN SHOWN IN THE PLANS, THOSE BOXES SHALL BE DELIVERED TO THE KING COUNTY SIGNAL SHOP AT THE CONTRACTOR'S EXPENSE.

**LEGEND**

- APPROXIMATE RIGHT-OF-WAY
- CONDUIT AND WIRING
- △ WIRE NOTE
- CONSTRUCTION NOTE
- ⊕ LIGHT STANDARD AND LUMINAIRE
- ⊠ TYPE 1 JUNCTION BOX
- ⊕ EX. SIGN AND POST TO BE MAINTAINED

100% DESIGN

DRAFTED: D. MCINTOSH  
 DESIGNED: K. DAVIS, P.E.  
 REVIEWED: R. PEREZ, P.E.  
 APPROVED: R. PEREZ, P.E.



DRAWING VERSION / REVISION LOG		
NO.	DATE	REVISION

**STREET LIGHT INFILL**

**ILLUMINATION SYSTEM - GROUP C**

30 AVE SW / SW 304 ST / 33 AVE SW / SW 302 PL / 31 AVE SW / SW 300 PL

CITY PROJECT #: 26775  
 SHT. 42  
 OF 76

**CONSTRUCTION NOTES**

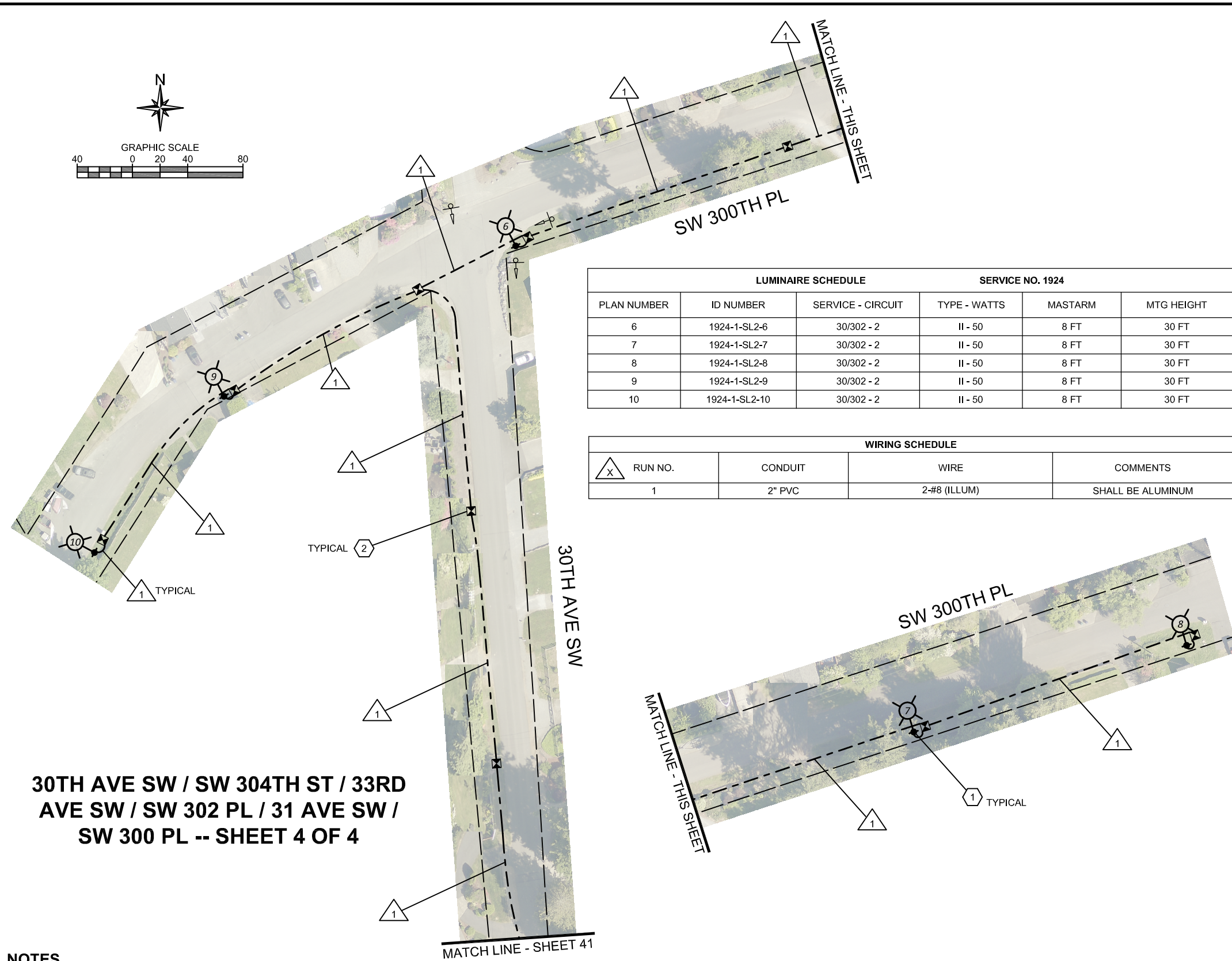
- ① INSTALL LIGHT STANDARD FOUNDATION, POLE, DAVIT ARM, AND LUMINAIRE IN APPROXIMATE LOCATION SHOWN (5 LOCATIONS THIS SHEET) AND IN ACCORDANCE WITH MANUFACTURER RECOMMENDATIONS, SPECIAL PROVISIONS, AND THE DETAILS ON SHEETS 60 AND 61.
- ② INSTALL TYPE 1 JUNCTION BOX (REFER TO STANDARD PLAN J-40.10 AND THE DETAILS ON SHEETS 65 AND 66) AT APPROXIMATE LOCATION SHOWN (9 BOXES THIS SHEET). SEE NOTES.

**GENERAL NOTES**

1. MAINTAIN AND PROTECT EXISTING FEATURES (TREES/ SHRUBS/ VEGETATION, DITCHES, DRIVEWAYS, ETC.) WITHIN PROJECT SITE UNLESS OTHERWISE NOTED.
2. UTILITIES ARE NOT SHOWN. IT IS THE CONTRACTOR'S RESPONSIBILITY TO AVOID AND PROTECT EXISTING UTILITIES AND RESOLVE CONFLICTS.
3. ALL LIGHT STANDARDS AND JUNCTION BOXES SHALL BE INSTALLED WITHIN A CONCRETE PAD IN ACCORDANCE WITH THE DETAIL ON SHEET 63.
4. ALL JUNCTION BOXES SHALL INCLUDE THE SYSTEM IDENTIFICATION LETTERS "LT".
5. LIGHT STANDARDS SHALL BE PLACED SUCH THAT THERE IS A MINIMUM OF 6 FT FROM CENTER OF STANDARD TO EDGE LINE OR FACE OF CURB. THE CONTRACTOR SHALL NOT PLACE LIGHT STANDARDS IN FORMAL OR INFORMAL WALKING PATHS. THE CONTRACTOR SHALL NOT IMPEDE SIGHT DISTANCE, SIGN VISIBILITY, OR USPS ACCESS WITH LIGHT STANDARD PLACEMENT.
6. THE LOCATIONS SHOWN OF POLES, JUNCTION BOXES, AND SERVICE CABINETS ARE APPROXIMATE AND SHOWN OVERSIZE. FIELD ADJUSTMENT MAY BE NECESSARY. SEE NOTES. ALL CONSTRUCTION AND ACTIVITIES SHALL BE LOCATED WITHIN CITY OF FEDERAL WAY PROPERTY. RIGHT-OF-WAY LINES SHOWN ARE APPROXIMATE.

**LEGEND**

- APPROXIMATE RIGHT-OF-WAY
- CONDUIT AND WIRING
- △ WIRE NOTE
- ⬡ CONSTRUCTION NOTE
- ⊕ LIGHT STANDARD AND LUMINAIRE
- ⊠ TYPE 1 JUNCTION BOX
- ⊞ TYPE 2 JUNCTION BOX
- ⊕ EX. SIGN AND POST TO BE MAINTAINED



LUMINAIRE SCHEDULE			SERVICE NO. 1924		
PLAN NUMBER	ID NUMBER	SERVICE - CIRCUIT	TYPE - WATTS	MASTARM	MTG HEIGHT
6	1924-1-SL2-6	30/302 - 2	II - 50	8 FT	30 FT
7	1924-1-SL2-7	30/302 - 2	II - 50	8 FT	30 FT
8	1924-1-SL2-8	30/302 - 2	II - 50	8 FT	30 FT
9	1924-1-SL2-9	30/302 - 2	II - 50	8 FT	30 FT
10	1924-1-SL2-10	30/302 - 2	II - 50	8 FT	30 FT

WIRING SCHEDULE			
△ RUN NO.	CONDUIT	WIRE	COMMENTS
1	2" PVC	2-#8 (ILLUM)	SHALL BE ALUMINUM

**30TH AVE SW / SW 304TH ST / 33RD AVE SW / SW 302 PL / 31 AVE SW / SW 300 PL -- SHEET 4 OF 4**

**NOTES**

1. JUNCTION BOXES FOR 30TH AVE SW AND SW 300TH PL ARE INTENDED TO HAVE SPACING OF APPROXIMATELY 195 FEET FOR INSTALLATION OF ADDITIONAL LIGHT STANDARDS IN THE FUTURE. THE CONTRACTOR SHALL BEAR THIS IN MIND WHEN PLACING THE JUNCTION BOXES AND ATTEMPT TO ADHERE TO THE SPACING AND PLAN LOCATIONS AS MUCH AS IS PRACTICABLE. THE CONTRACTING AGENCY UNDERSTANDS THAT FIELD CONDITIONS MAY PRECLUDE THIS. ANY JUNCTION BOX SPACING GREATER THAN 250 FEET WILL NEED TO BE COORDINATED AND APPROVED BY THE ENGINEER, PRIOR TO INSTALLATION. IF FEWER JUNCTION BOXES ARE INSTALLED THAN SHOWN IN THE PLANS, THOSE BOXES SHALL BE DELIVERED TO THE KING COUNTY SIGNAL SHOP AT THE CONTRACTOR'S EXPENSE.

100% DESIGN

**CITY OF Federal Way**  
Centered on Opportunity  
33325 8th Avenue South  
Federal Way, WA 98003-6325  
(253) 835-2700  
www.cityoffederalway.com

**811**  
Know what's below.  
Call 811 before you dig.

DRAFTED: D. MCINTOSH  
DESIGNED: K. DAVIS, P.E.  
REVIEWED: R. PEREZ, P.E.  
APPROVED: R. PEREZ, P.E.

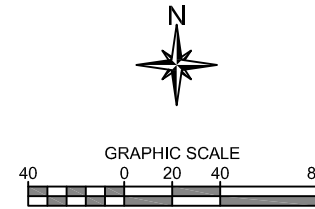
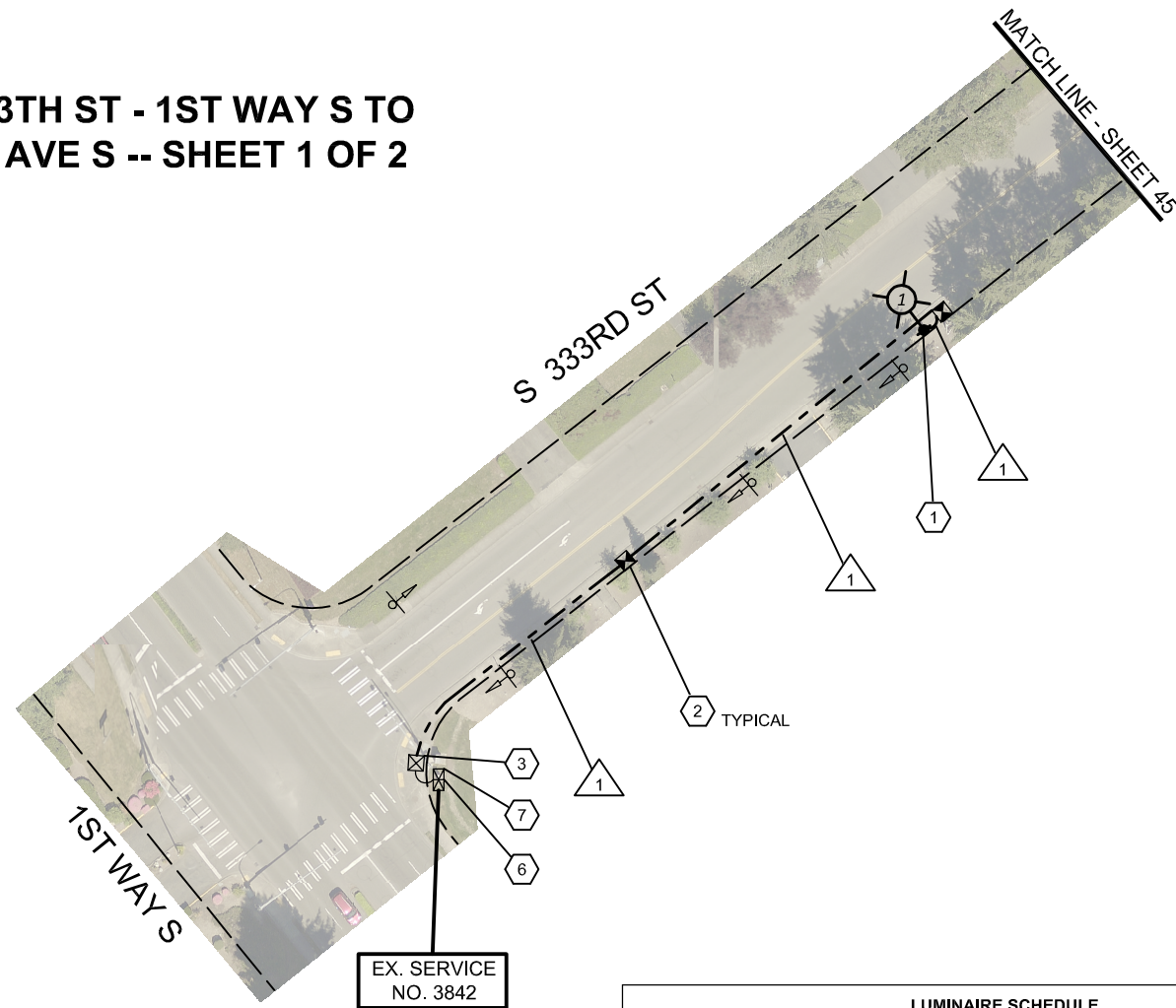
DRAWING VERSION / REVISION LOG		
NO.	DATE	REVISION

**STREET LIGHT INFILL**  
**ILLUMINATION SYSTEM - GROUP C**  
30 AVE SW / SW 304 ST / 33 AVE SW / SW 302 PL / 31 AVE SW / SW 300 PL

CITY PROJECT #: 26775  
SHT. 43  
OF 76

K:\ENGINEERING DIVISION\PROJECTS\ACTIVE\26775 - Streetlight Infill\03 PE\ACAD\03 NO DASH FT RD.dwg 12/12/2023 2:51 PM

**S 333TH ST - 1ST WAY S TO  
8TH AVE S -- SHEET 1 OF 2**



**CONSTRUCTION NOTES**

- ① INSTALL LIGHT STANDARD FOUNDATION, POLE, DAVIT ARM, AND LUMINAIRE IN APPROXIMATE LOCATION SHOWN (1 LOCATION THIS SHEET) AND IN ACCORDANCE WITH MANUFACTURER RECOMMENDATIONS, SPECIAL PROVISIONS, AND THE DETAILS ON SHEETS 60 AND 61.
- ② INSTALL TYPE 1 JUNCTION BOX (REFER TO STANDARD PLAN J-40.10 AND THE DETAILS ON SHEETS 65 AND 66) AT APPROXIMATE LOCATION SHOWN (2 BOXES THIS SHEET). SEE NOTES.
- ③ INSTALL CONDUIT INTO EXISTING JUNCTION BOX. SPLICE NEW CONDUCTORS TO EXISTING ILLUMINATION CONDUCTORS.
- ⑥ MAINTAIN AND PROTECT TRAFFIC SIGNAL SYSTEM AND ASSOCIATED INFRASTRUCTURE.
- ⑦ EXISTING SERVICE CABINET TO BE USED FOR PROPOSED LIGHT STANDARDS FOR S 333 ST, JUST NORTH OF 1 WAY S.

**GENERAL NOTES**

- 1. MAINTAIN AND PROTECT EXISTING FEATURES (TREES/ SHRUBS/ VEGETATION, DITCHES, DRIVEWAYS, ETC.) WITHIN PROJECT SITE UNLESS OTHERWISE NOTED. UTILITIES ARE NOT SHOWN. IT IS THE CONTRACTOR'S RESPONSIBILITY TO AVOID AND PROTECT EXISTING UTILITIES AND RESOLVE CONFLICTS.
- 3. ALL LIGHT STANDARDS AND JUNCTION BOXES SHALL BE INSTALLED WITHIN A CONCRETE PAD IN ACCORDANCE WITH THE DETAIL ON SHEET 63.
- 4. ALL JUNCTION BOXES SHALL INCLUDE THE SYSTEM IDENTIFICATION LETTERS "LT".
- 5. LIGHT STANDARDS SHALL BE PLACED SUCH THAT THERE IS A MINIMUM OF 6 FT FROM CENTER OF STANDARD TO EDGE LINE OR FACE OF CURB. THE CONTRACTOR SHALL NOT PLACE LIGHT STANDARDS IN FORMAL OR INFORMAL WALKING PATHS. THE CONTRACTOR SHALL NOT IMPEDE SIGHT DISTANCE, SIGN VISIBILITY, OR USPS ACCESS WITH LIGHT STANDARD PLACEMENT.
- 6. THE LOCATIONS SHOWN OF POLES, JUNCTION BOXES, AND SERVICE CABINETS ARE APPROXIMATE AND SHOWN OVERSIZE. FIELD ADJUSTMENT MAY BE NECESSARY. SEE NOTES. ALL CONSTRUCTION AND ACTIVITIES SHALL BE LOCATED WITHIN CITY OF FEDERAL WAY PROPERTY. RIGHT-OF-WAY LINES SHOWN ARE APPROXIMATE.

LUMINAIRE SCHEDULE			SERVICE NO. 3842		
PLAN NUMBER	ID NUMBER	SERVICE - CIRCUIT	TYPE - WATTS	MASTARM	MTG HEIGHT
1	3842-1-SL1-1	1/333 - 1	II - 60	12 FT	35 FT

WIRING SCHEDULE				
△ X RUN NO.	CONDUIT	WIRE	COMMENTS	
1	2" PVC	2-#8 (ILLUM)	SHALL BE ALUMINUM	

**NOTES**

- 1. JUNCTION BOXES FOR S 333RD ST ARE INTENDED TO HAVE SPACING OF APPROXIMATELY 175 FEET FOR INSTALLATION OF ADDITIONAL LIGHT STANDARDS IN THE FUTURE. THE CONTRACTOR SHALL BEAR THIS IN MIND WHEN PLACING THE JUNCTION BOXES AND ATTEMPT TO ADHERE TO THE SPACING AND PLAN LOCATIONS AS MUCH AS IS PRACTICABLE. THE CONTRACTING AGENCY UNDERSTANDS THAT FIELD CONDITIONS MAY PRECLUDE THIS. ANY JUNCTION BOX SPACING GREATER THAN 250 FEET WILL NEED TO BE COORDINATED AND APPROVED BY THE ENGINEER, PRIOR TO INSTALLATION. IF FEWER JUNCTION BOXES ARE INSTALLED THAN SHOWN IN THE PLANS, THOSE BOXES SHALL BE DELIVERED TO THE KING COUNTY SIGNAL SHOP AT THE CONTRACTOR'S EXPENSE.

**LEGEND**

- APPROXIMATE RIGHT-OF-WAY
- CONDUIT AND WIRING
- - - EX. CONDUIT AND WIRING
- △ WIRE NOTE
- CONSTRUCTION NOTE
- ⊕ LIGHT STANDARD AND LUMINAIRE
- ⊠ TYPE 1 JUNCTION BOX
- ⊞ EX. TYPE 1 JUNCTION BOX
- ⊞ EX. SERVICE CABINET
- ⊕ EX. SIGN AND POST TO BE MAINTAINED

100% DESIGN

**CITY OF Federal Way**  
Centered on Opportunity  
33325 8th Avenue South  
Federal Way, WA 98003-6325  
(253) 835-2700  
www.cityoffederalway.com

**811**  
Know what's below.  
Call 811 before you dig.

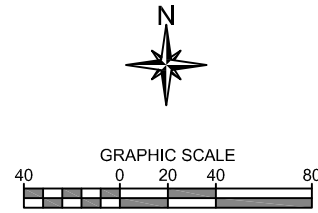
DRAFTED: D. MCINTOSH  
DESIGNED: K. DAVIS, P.E.  
REVIEWED: R. PEREZ, P.E.  
APPROVED: R. PEREZ, P.E.



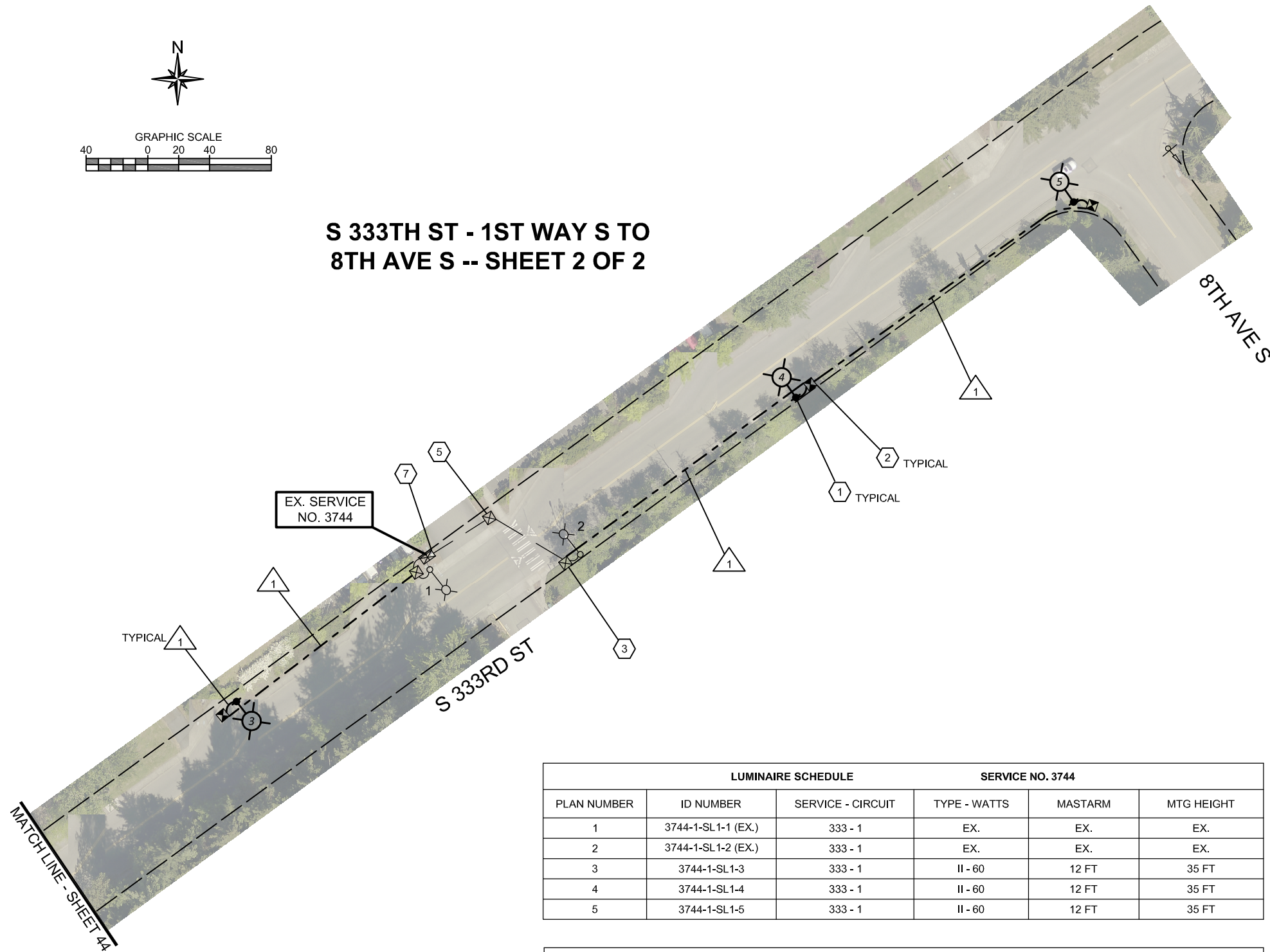
DRAWING VERSION / REVISION LOG		
NO.	DATE	REVISION

**STREET LIGHT INFILL**  
**ILLUMINATION SYSTEM - GROUP D**  
**S 333 ST - 1 WAY S TO 8 AVE S**

CITY PROJECT #:  
**26775**  
SHT. 44  
OF 76



**S 333TH ST - 1ST WAY S TO  
8TH AVE S -- SHEET 2 OF 2**



**CONSTRUCTION NOTES**

- 1 INSTALL LIGHT STANDARD FOUNDATION, POLE, DAVIT ARM, AND LUMINAIRE IN APPROXIMATE LOCATION SHOWN (3 LOCATIONS THIS SHEET) AND IN ACCORDANCE WITH MANUFACTURER RECOMMENDATIONS, SPECIAL PROVISIONS, AND THE DETAILS ON SHEETS 60 AND 61.
- 2 INSTALL TYPE 1 JUNCTION BOX (REFER TO STANDARD PLAN J-40.10 AND THE DETAILS ON SHEETS 65 AND 66) AT APPROXIMATE LOCATION SHOWN (3 BOXES THIS SHEET). SEE NOTES.
- 3 INSTALL CONDUIT INTO EXISTING JUNCTION BOX. SPLICE NEW CONDUCTORS TO EXISTING ILLUMINATION CONDUCTORS.
- 5 MAINTAIN AND PROTECT EXISTING ILLUMINATION SYSTEM.
- 7 EXISTING SERVICE CABINET TO BE USED FOR PROPOSED LIGHT STANDARDS FOR S 333 ST, ALONG FEDERAL WAY CITY HALL PROPERTY (BOTH SIDES OF THE STREET).

**GENERAL NOTES**

- 1. MAINTAIN AND PROTECT EXISTING FEATURES (TREES/ SHRUBS/ VEGETATION, DITCHES, DRIVEWAYS, ETC.) WITHIN PROJECT SITE UNLESS OTHERWISE NOTED.
- 2. UTILITIES ARE NOT SHOWN. IT IS THE CONTRACTOR'S RESPONSIBILITY TO AVOID AND PROTECT EXISTING UTILITIES AND RESOLVE CONFLICTS.
- 3. ALL LIGHT STANDARDS AND JUNCTION BOXES SHALL BE INSTALLED WITHIN A CONCRETE PAD IN ACCORDANCE WITH THE DETAIL ON SHEET 63.
- 4. ALL JUNCTION BOXES SHALL INCLUDE THE SYSTEM IDENTIFICATION LETTERS "LT".
- 5. LIGHT STANDARDS SHALL BE PLACED SUCH THAT THERE IS A MINIMUM OF 6 FT FROM CENTER OF STANDARD TO EDGE LINE OR FACE OF CURB. THE CONTRACTOR SHALL NOT PLACE LIGHT STANDARDS IN FORMAL OR INFORMAL WALKING PATHS. THE CONTRACTOR SHALL NOT IMPEDE SIGHT DISTANCE, SIGN VISIBILITY, OR USPS ACCESS WITH LIGHT STANDARD PLACEMENT.
- 6. THE LOCATIONS SHOWN OF POLES, JUNCTION BOXES, AND SERVICE CABINETS ARE APPROXIMATE AND SHOWN OVERSIZE. FIELD ADJUSTMENT MAY BE NECESSARY. SEE NOTES. ALL CONSTRUCTION AND ACTIVITIES SHALL BE LOCATED WITHIN CITY OF FEDERAL WAY PROPERTY. RIGHT-OF-WAY LINES SHOWN ARE APPROXIMATE.

LUMINAIRE SCHEDULE			SERVICE NO. 3744		
PLAN NUMBER	ID NUMBER	SERVICE - CIRCUIT	TYPE - WATTS	MASTARM	MTG HEIGHT
1	3744-1-SL1-1 (EX.)	333 - 1	EX.	EX.	EX.
2	3744-1-SL1-2 (EX.)	333 - 1	EX.	EX.	EX.
3	3744-1-SL1-3	333 - 1	II - 60	12 FT	35 FT
4	3744-1-SL1-4	333 - 1	II - 60	12 FT	35 FT
5	3744-1-SL1-5	333 - 1	II - 60	12 FT	35 FT

WIRING SCHEDULE			
△ RUN NO.	CONDUIT	WIRE	COMMENTS
1	2" PVC	2-#8 (ILLUM)	SHALL BE ALUMINUM

**LEGEND**

---	APPROXIMATE RIGHT-OF-WAY	☒	TYPE 1 JUNCTION BOX
---	CONDUIT AND WIRING	☒	EX. TYPE 1 JUNCTION BOX
---	EX. CONDUIT AND WIRING	☒	EX. SERVICE CABINET
△	WIRE NOTE	⊕	EX. SIGN AND POST TO BE MAINTAINED
⬡	CONSTRUCTION NOTE		
☉	LIGHT STANDARD AND LUMINAIRE		
☉	EX. CITY-OWNED LIGHT STANDARD AND LUMINAIRE		

**NOTES**

- 1. JUNCTION BOXES FOR S 333RD ST ARE INTENDED TO HAVE SPACING OF APPROXIMATELY 175 FEET FOR INSTALLATION OF ADDITIONAL LIGHT STANDARDS IN THE FUTURE. THE CONTRACTOR SHALL BEAR THIS IN MIND WHEN PLACING THE JUNCTION BOXES AND ATTEMPT TO ADHERE TO THE SPACING AND PLAN LOCATIONS AS MUCH AS IS PRACTICABLE. THE CONTRACTING AGENCY UNDERSTANDS THAT FIELD CONDITIONS MAY PRECLUDE THIS. ANY JUNCTION BOX SPACING GREATER THAN 250 FEET WILL NEED TO BE COORDINATED AND APPROVED BY THE ENGINEER, PRIOR TO INSTALLATION. IF FEWER JUNCTION BOXES ARE INSTALLED THAN SHOWN IN THE PLANS, THOSE BOXES SHALL BE DELIVERED TO THE KING COUNTY SIGNAL SHOP AT THE CONTRACTOR'S EXPENSE.

100% DESIGN

**CITY OF Federal Way**  
Centered on Opportunity  
33325 8th Avenue South  
Federal Way, WA 98003-6325  
(253) 835-2700  
www.cityoffederalway.com

**811**  
Know what's below.  
Call 811 before you dig.

DRAFTED: D. MCINTOSH  
DESIGNED: K. DAVIS, P.E.  
REVIEWED: R. PEREZ, P.E.  
APPROVED: R. PEREZ, P.E.



DRAWING VERSION / REVISION LOG		
NO.	DATE	REVISION

**STREET LIGHT INFILL**  
**ILLUMINATION SYSTEM - GROUP D**  
**S 333 ST - 1 WAY S TO 8 AVE S**

CITY PROJECT #:  
**26775**  
SHT. 45  
OF 76

K:\ENGINEERING DIVISION\PROJECTS\ACTIVE\26775 - Streetlight Infill\03 PE\ACAD\0333-1.dwg 12/12/2023 2:53 PM