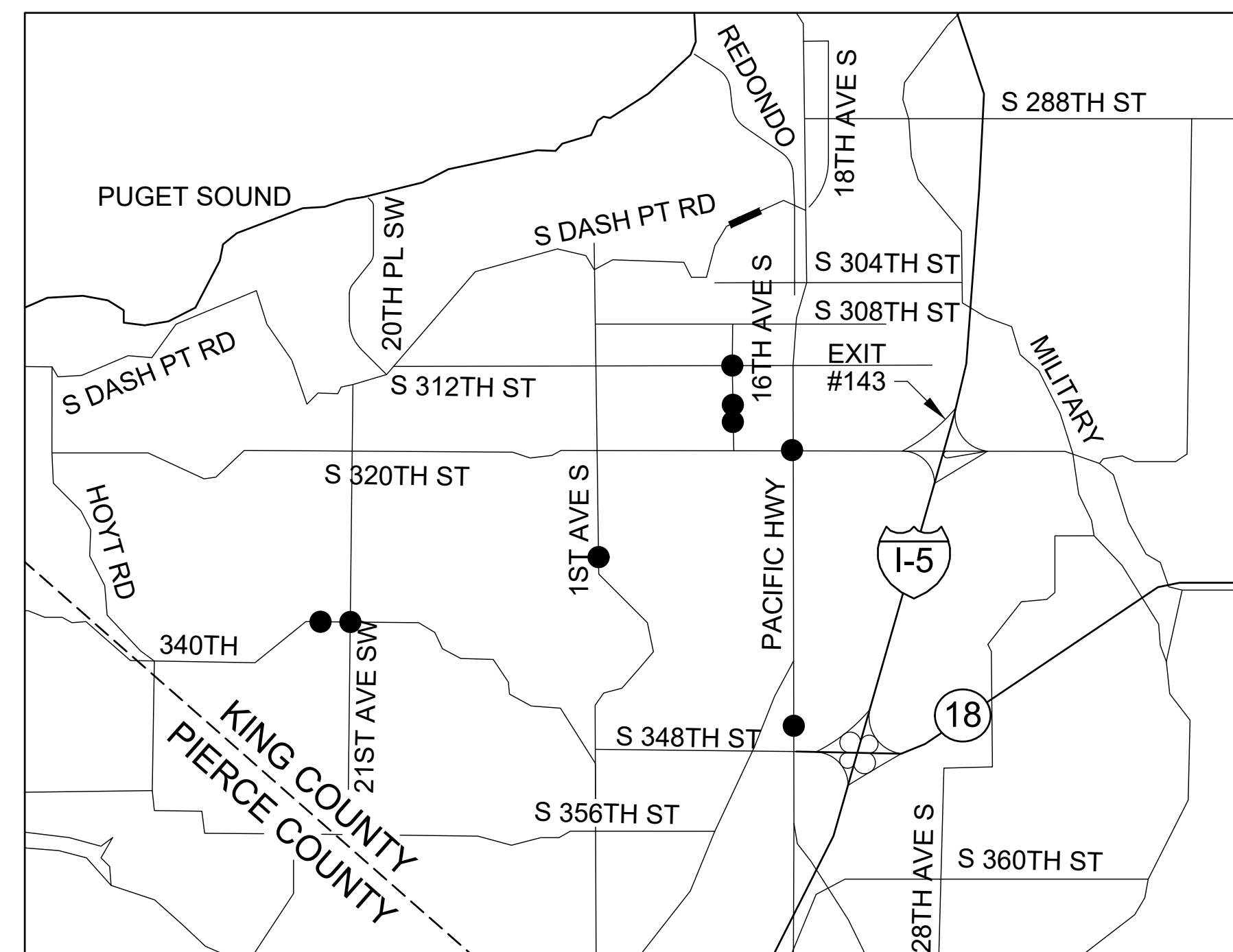


# City of Federal Way Public Works Department 2022 CITYWIDE ADA RETROFITS

June, 2023  
PROJECT 36228

SHEET INDEX	SHEET TITLE (THIS IS FOR INFORMATION ONLY, REAL DRAWING INDEX WILL BE GENERATED FROM THE PROJECT SHEET SET)
1	COVER SHEET & DRAWING INDEX
2	LEGEND & ABBREVIATIONS
3	LEGEND & ABBREVIATIONS
4	CURB RAMPS
5	CURB RAMPS (2)
6	CURB RAMPS (3)
7	CURB RAMPS (4)
8	CURB RAMPS (5)
9	CURB RAMPS (6)
10	CURB RAMPS (7)
11	CURB RAMPS (8)
12	MEDIAN VEGETATION REPLACEMENT

### PROJECT LOCATIONS



RFB NO.22-010

APPROVED FOR CONSTRUCTION  
E.J. WALSH P.E. PUBLIC WORKS DIRECTOR  
7/13/2023 DATE

100% DRAWINGS



DRAFTED: J.MULKEY  
DESIGNED: J. MULKEY  
REVIEWED: C. MULLEN  
APPROVED: C. MULLEN



DRAWING VERSION / REVISION LOG		
NO.	DATE	REVISION

2022 CITYWIDE ADA RETROFITS

COVER

CITY PROJECT #:  
36228  
SHEET  
01  
1 OF 11

k:\engineering\division\PROJECTS\ACTIVE\36228 - citywide ada retrofits\03 PE\ACAD\Citywide ADA Retrofits A.dwg, 7/13/2023

# LEGEND

## EXISTING (PER KPG)

MIC	MONUMENT IN CASE	Ⓣ	TELEPHONE MANHOLE	— P —	PAINTED POWER
MON	SURFACE MONUMENT	Ⓣ	TELEPHONE RISER	— P —	RECORD POWER
△	PK NAIL	Ⓣ	TELEPHONE VAULT LID	— T —	PAINTED TELEPHONE
RC	REBAR & CAP	Ⓣ	TELEPHONE POLE	— T —	RECORD TELEPHONE
⊗	SPOT SHOT (DESCRIBED)	Ⓣ	TV MANHOLE	— FD —	PAINTED FIBER OPTIC
□	CATCH BASIN	Ⓣ	TV RISER	— TV —	PAINTED TV
Ⓣ	STORM DRAIN MANHOLE	Ⓣ	TV VAULT LID	— W —	PAINTED WATER
Ⓣ	YARD DRAIN	Ⓣ	FIBER OPTIC MANHOLE	— W —	RECORD WATER
Ⓣ	DOWNSPOUT	Ⓣ	FIBER OPTIC VAULT LID	— G —	PAINTED GAS
SD	STORM DRAIN CLEAN-OUT	Ⓣ	GAS VALVE	— G —	RECORD GAS
^	CULVERT	Ⓣ	GAS METER	— OH —	OVERHEAD UTILITY LINE (GENERIC)
○	SEWER MANHOLE	Ⓣ	GAS MANHOLE	— SD —	STORM
SS	SEWER CLEAN-OUT	Ⓣ	WATER VALVE	— S —	SEWER
Ⓣ	POWER POLE	Ⓣ	WATER METER	— X —	FENCE
Ⓣ	POWER POLE W/UNDERGROUND CONNECT	Ⓣ	WATER MANHOLE	~~~~~	HEDGE (HEIGHT NOTED)
Ⓣ	POWER POLE WITH LUMINAIRE	Ⓣ	WATER VAULT LID	//////	BUILDING
Ⓣ	PWR POLE W/LUMINAIRE & UNDGRD CONNECT	Ⓣ	FIRE HYDRANT	————	PAINTED STRIPE
Ⓣ	POWER MANHOLE	Ⓣ	BLOW-OFF	————	PAINTED SKIP STRIPE
Ⓣ	POWER RISER	Ⓣ	FIRE DEPARTMENT CONNECT	.....	RAISED-BUTTON SOLID STRIPE
Ⓣ	POWER VAULT LID	Ⓣ	POST INDICATOR VALVE	.....	RAISED-BUTTON SKIP STRIPE
Ⓣ	POWER TRANSFORMER	Ⓣ	HOSE BIB	————	EDGE OF PAVEMENT
Ⓣ	POWER METER	Ⓣ	IRRIGATION CONTROL VALVE	-----	FLOWLINE
Ⓣ	POWER OUTLET	Ⓣ	UTILITY MANHOLE (GENERIC/UNK)	-----	CONTOUR
Ⓣ	HIGH VOLTAGE POWER POLE	Ⓣ	UTILITY VAULT LID (GENERIC/UNK)	-----	RIGHT OF WAY LINE
Ⓣ	HIGH VOLTAGE PWR POLE W/UNDGRD CONNECT	Ⓣ	UTILITY CLEAN-OUT (GENERIC/UNK)	-----	CONCRETE
Ⓣ	GUY POLE	Ⓣ	UTILITY RISER (GENERIC/UNK)	-----	GRAVEL
→	GUY ANCHOR	Ⓣ	STAND-PIPE (GENERIC/UNK)	-----	GRASS
Ⓣ	TRAFFIC SIGNAL	Ⓣ	UTILITY ACCESS (GENERIC/UNK)	-----	ROCKERY
Ⓣ	TRAFFIC SIGNAL WITH LUMINAIRE	Ⓣ	BORE SITE (WITH FIELD DESC)	-----	BRICK
Ⓣ	PEDESTRIAN SIGNAL	Ⓣ	MONITORING WELL	-----	METAL GRATE
Ⓣ	JUNCTION BOX	Ⓣ	GUARD POST	-----	METAL GRATE
Ⓣ	TRAFFIC CONTROL CABINET	Ⓣ	BOULDER	-----	ASPHALT/CONCRETE
Ⓣ	BACKUP POWER SUPPLY	Ⓣ	SIGN	-----	CHLNK
Ⓣ	INTERCONNECT CABINET	Ⓣ	MAILBOX (# OF BOXES)	-----	DWY
Ⓣ	ELECTRICAL SERVICE CABINET	Ⓣ	SHRUB	-----	COL
Ⓣ	TRAFFIC ATTENUATOR LOOP	Ⓣ	STUMP, DIAMETER	-----	YD
Ⓣ	STREET LIGHT (LUMINAIRE)	Ⓣ	SNAG, DIAMETER (# OF TRUNKS)	-----	STCR
Ⓣ	LOT LIGHT	Ⓣ	DECIDUOUS TREE, DIA (# OF TRUNKS)	-----	FF
Ⓣ	YARD LIGHT	Ⓣ	CONIFEROUS TREE, DIA (# OF TRUNKS)	-----	FF
Ⓣ	RAILROAD CROSSING ARM				
Ⓣ	RAILROAD CROSSING SIGNAL				

## PROPOSED

Ⓣ	MONUMENT	XXX	CONTOUR
Ⓣ	STORMDRAIN MANHOLE	→ →	DITCH FLOWLINE
■	CATCH BASIN	=====	EDGE OF PAVEMENT
Ⓣ	AREA DRAIN	=====	CONCRETE CURB & GUTTER
SD	STORMDRAIN CLEAN-OUT	-----	SAWCUT
^	CULVERT	.....	LIMITS OF GRADING
Ⓣ	SEWER MANHOLE	— SD —	STORMDRAIN
Ⓣ	SIGN	— UD —	UNDERDRAIN
MB	MAILBOX	— SS —	SANITARY SEWER
GP	BOLLARD	— W —	WATER
+	BORE / POTHOLE LOCATION	— IRR —	IRRIGATION
Ⓣ	SHRUB	— G —	GAS
Ⓣ	DECIDUOUS TREE, DIA (# OF TRUNKS)	— UE —	UNDERGROUND POWER
Ⓣ	CONIFEROUS TREE, DIA (# OF TRUNKS)	— TEL —	TELECOMMUNICATION
Ⓣ	BOULDER	— OE —	OVERHEAD UTILITY LINE
Ⓣ	STREET LIGHT (LUMINAIRE)	— FO —	CITY FIBER
Ⓣ	TRAFFIC SIGNAL, POLE & MAST ARM	— C —	CUT LINE
Ⓣ	TRAFFIC SIGNAL POLE & MAST ARM W/ LUMINAIRE ARM	— F —	FILL LINE
Ⓣ	PEDESTRIAN PUSHBUTTON POLE	— X —	FENCE - CHAINLINK
Ⓣ	TRAFFIC / ILLUM J-BOX	— O —	FENCE - WOOD
Ⓣ	TRAFFIC CONTROL CABINET		
BPS	BACKUP POWER SUPPLY		
Ⓣ	ELECTRICAL SERVICE CABINET		
Ⓣ	TRAFFIC SIGNAL VEHICLE DETECTION		
FO	CITY FIBER OPTIC VAULT / J-BOX		
Ⓣ	FESTIVAL OUTLET		
Ⓣ	POWER POLE		
→	POWER POLE GUY ANCHOR		
Ⓣ	POWER POLE W/ LUMINAIRE		
P	POWER VAULT LID / J-BOX		
Ⓣ	POWER TRANSFORMER		
Ⓣ	POWER METER		
T	TELECOMM VAULT / J-BOX		
PED	UTILITY PEDESTAL		
Ⓣ	GAS VALVE		
Ⓣ	GAS METER		
Ⓣ	WATER VALVE		
Ⓣ	WATER METER		
W	WATER VAULT LID		
Ⓣ	FIRE HYDRANT		
Ⓣ	BLOW-OFF		

# ABBREVIATIONS

ABND	ABANDONED	MW	MONITORING WELL
AC	ASPHALT	N	NORTHING/NORTH
AC	ASBESTOS CEMENT WATER PIPE	NO	NUMBER
ACP	ASPHALT CONCRETE PAVEMENT	NTS	NOT TO SCALE
ADA	AMERICANS WITH DISABILITIES ACT	OC	ON CENTER
AP	ANGLE POINT	OD	OUTSIDE DIAMETER
AVE	AVENUE	OH	OVERHEAD UTILITIES
BLDG	BUILDING	PC	POINT OF CURVATURE
BMP	BEST MANAGEMENT PRACTICE	PCC	POINT OF CURVE ON CURVE
BOW	BACK OF WALK	PE	POLYETHYLENE
CB	CATCH BASIN	PG	PERFORMANCE GRADE
CDF	CONTROLLED DENSITY FILL	PI	POINT OF INTERSECTION
CI	CAST IRON	PIV	POST INDICATOR VALVE
CL	CENTERLINE	POB	POINT OF BEGINNING
CL	CLASS	POC	POINT OF CONNECTION
CO	CLEANOUT	POE	POINT OF ENDING
CONC	CONCRETE	PRC	POINT OF REVERSE CURVATURE
CONT	CONTAINER	PT	POINT OF TANGENCY
DCVA	DOUBLE CHECK VALVE ASSEMBLY	PVC	POLYVINYL CHLORIDE
DI	DUCTILE IRON	PVI	POINT OF VERTICAL INTERSECTION
DIA #	DIAMETER	R	RADIUS
CFW	CITY OF FEDERAL WAY	RJ	RESTRAINED JOINT
CSBC	CRUSHED SURFACING BASE COURSE	RT	RIGHT
E	EASTING/EAST	S	SLOPE/SOUTH
EL	ELEVATION	SD	STORM DRAIN
ELEV	ELEVATION	SDP	STORM DRAIN PIPE
EOP	EDGE OF PAVEMENT	SEW	SEWER
EX	EXISTING	SHT	SHEET
EXIST	EXISTING	SSMH	SANITARY SEWER MANHOLE
FDC	FIRE DEPARTMENT CONNECTION	ST	STREET
FG	FINISHED GRADE	STA	STATION
FL	FLANGE	STD	STANDARD
FL	FLOWLINE	T	TANGENT LENGTH
HMA	HOT MIX ASPHALT	T1	TYPE 1 CATCH BASIN
ICV	IRRIGATION CONTROL VALVE	T2	TYPE 2 CATCH BASIN
ID	INSIDE DIAMETER	TOC	TOP OF CURB
IE	INVERT ELEVATION	TOG	TOP OF GRATE
L	LENGTH OF CURVE	TYP	TYPICAL
LT	LEFT	VC	VERTICAL CURVE
LF	LINEAR FEET	VERT	VERTICAL
LP	LOW POINT	VLT	VAULT
MAX	MAXIMUM	W	WEST / WITH
MIN	MINIMUM	WAT	WATER
MH	MANHOLE	WSDOT	WASHINGTON STATE DEPARTMENT OF TRANSPORTATION
MIC	MONUMENT IN CASE		
MJ	MECHANICAL JOINT		

100% DRAWINGS

**CITY OF Federal Way**  
Centered on Opportunity  
33325 8TH AVE S FEDERAL WAY, WA 98003  
PHONE: (253) 835-2700  
WWW.CITYOFFEDERALWAY.COM

**811**  
Know what's below.  
Call before you dig.

DRAFTED: J. MULKEY
DESIGNED: J. MULKEY
REVIEWED: C. MULLEN
APPROVED: C. MULLEN

**JOHN ROBERT MULKEY**  
PROFESSIONAL ENGINEER  
July 13, 2023

DRAWING VERSION / REVISION LOG		
NO.	DATE	REVISION

**2022 CITYWIDE ADA RETROFITS**

Legend

CITY PROJECT #:	36228
SHEET	02
	02 OF 11

K:\engineering\division\PROJECTS\ACTIVE\36228 - citywide ada retrofits\03 PE\ACAD\CITYWIDE ADA RETROFITS A.dwg, 7/13/2023



# SW 336TH ST

REMOVE 18" CONCRETE CURB, INCLUDING REBAR INSETS. GRIND AREA TO MATCH SLOPE AND GRADE OF EXISTING SIDEWALK. PLACE SURFACE APPLIED MMA BLACK DETECTABLE WARNING SURFACE 2' WIDE BETWEEN EXISTING RAMP LANDINGS.



## 24TH PL SW

4.7'

# SW 336TH ST

REMOVE 18" CONCRETE CURB, INCLUDING REBAR INSETS. GRIND AREA TO MATCH SLOPE AND GRADE OF EXISTING SIDEWALK. PLACE SURFACE APPLIED BLACK MMA DETECTABLE WARNING SURFACE 2' WIDE BETWEEN EXISTING RAMP LANDINGS.



## 24TH PL SW

3.7'

### CURB RAMP NOTES

1. DETECTABLE WARNING SURFACE PER WSDOT STD PLAN F-45.10-02.
2. CONCRETE CURB TO BE REMOVED WAS PLACED SEPARATELY FROM CURB WITH COLD JOINT FOR POINT OF REMOVAL.

1 EXISTING CURB RAMP  
SCALE: 1"=3'

2 EXISTING CURB RAMP  
SCALE: 1"=3'

100% DRAWINGS

DRAWING VERSION / REVISION LOG		
NO.	DATE	REVISION

SW 336TH ST

13.5'

21ST AVE SW



REMOVE 18" CONCRETE CURB, INCLUDING REBAR INSETS. GRIND AREA TO MATCH SLOPE AND GRADE OF EXISTING SIDEWALK. PLACE SURFACE APPLIED BLACK DETECTABLE WARNING SURFACE 2' WIDE BETWEEN EXISTING RAMP LANDINGS.

3 EXISTING CURB RAMP  
SCALE: 1"=3'

SW 336TH ST

9.2'

21ST AVE SW



REMOVE 18" CONCRETE CURB, INCLUDING REBAR INSETS. GRIND AREA TO MATCH SLOPE AND GRADE OF EXISTING SIDEWALK. PLACE SURFACE APPLIED BLACK DETECTABLE WARNING SURFACE 2' WIDE BETWEEN EXISTING RAMP LANDINGS.

4 EXISTING CURB RAMP  
SCALE: 1"=3'

CURB RAMP NOTES

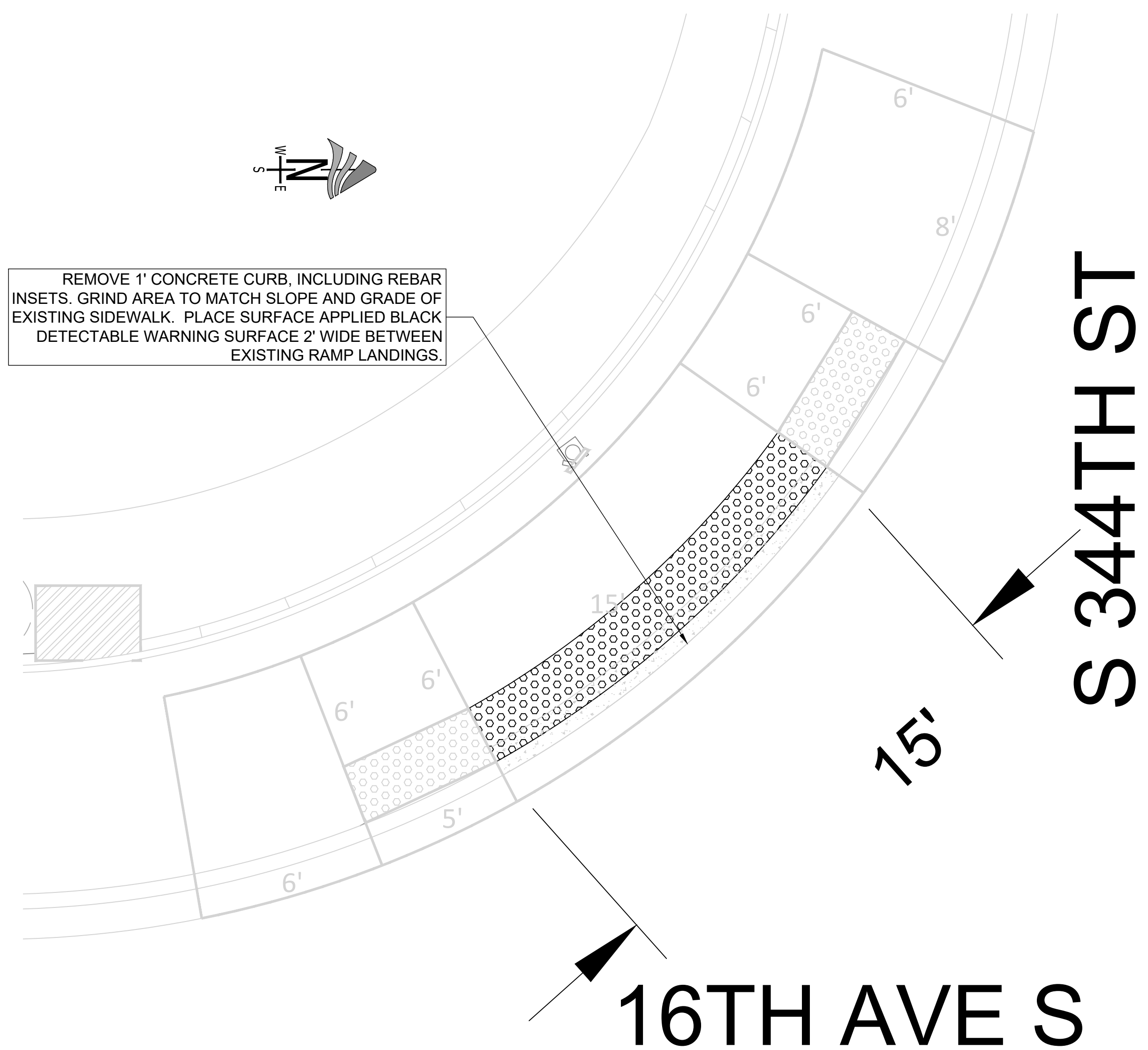
1. DETECTABLE WARNING SURFACE PER WSDOT STD PLAN F-45.10-02.
2. CONCRETE CURB TO BE REMOVED WAS PLACED SEPARATELY FROM CURB WITH COLD JOINT FOR POINT OF REMOVAL.

100% DRAWINGS

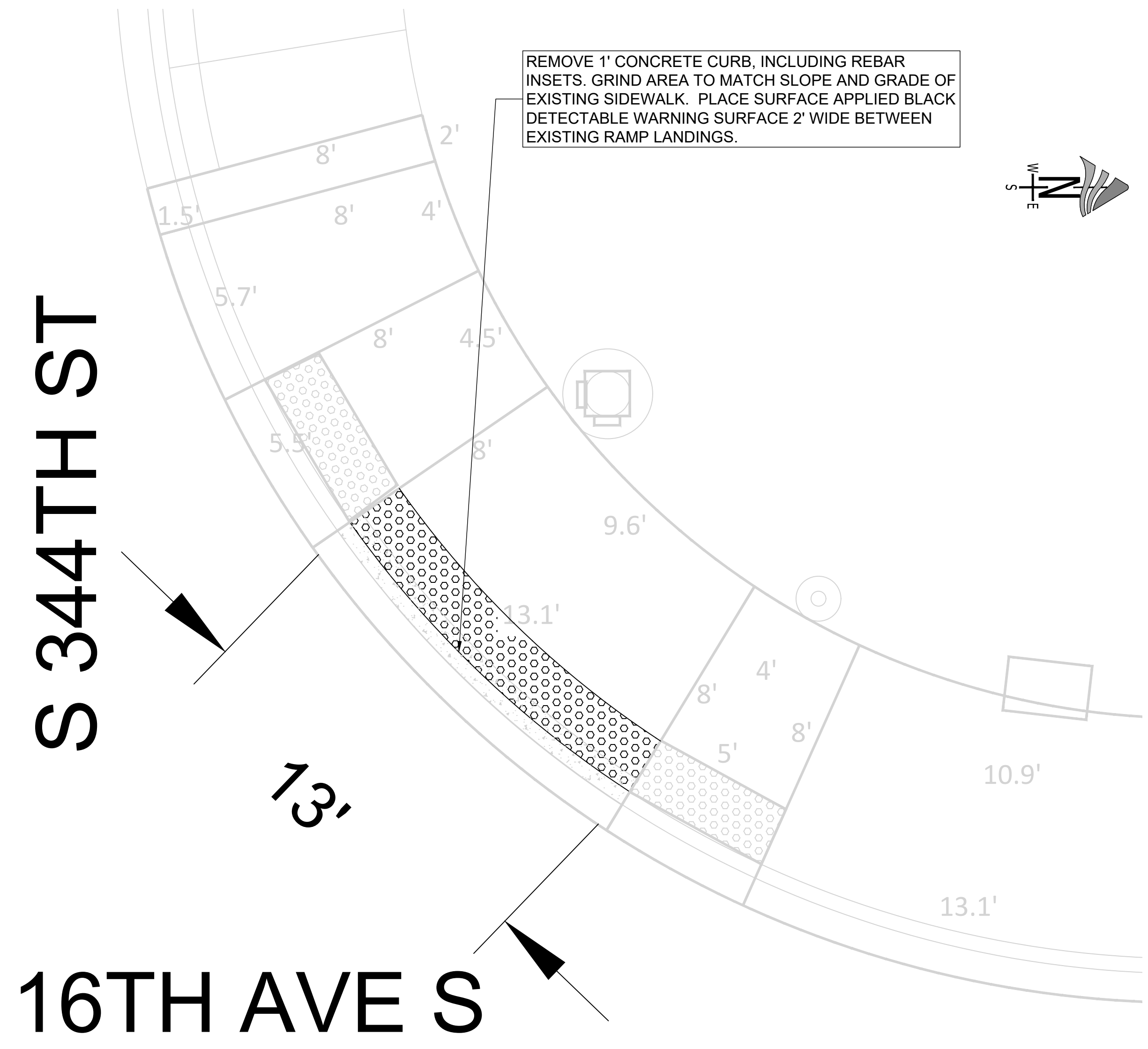
DRAWING VERSION / REVISION LOG		
NO.	DATE	REVISION

k:\engineering\division\PROJECTS\ACTIVE\36228 - citywide ada retrofits\03 PE\ACAD\Citywide ADA Retrofits A.dwg, 7/13/2023





5 EXISTING CURB RAMP  
SCALE: 1"=3'



6 EXISTING CURB RAMP  
SCALE: 1"=3'

CURB RAMP NOTES

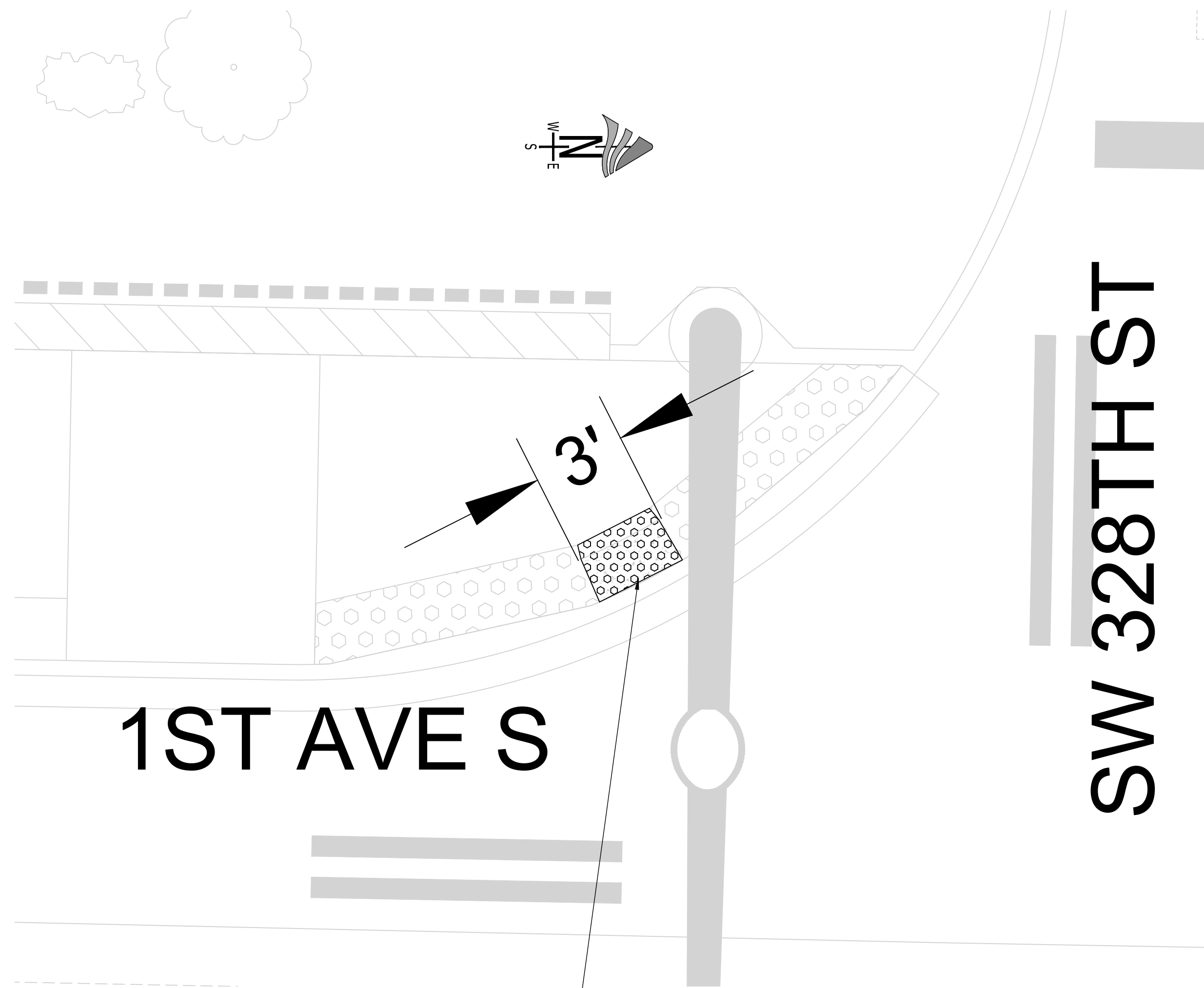
1. DETECTABLE WARNING SURFACE PER WSDOT STD PLAN F-45.10-02.
2. CONCRETE CURB TO BE REMOVED WAS PLACED SEPARATELY FROM CURB WITH COLD JOINT FOR POINT OF REMOVAL.

100% DRAWINGS

DRAWING VERSION / REVISION LOG		
NO.	DATE	REVISION

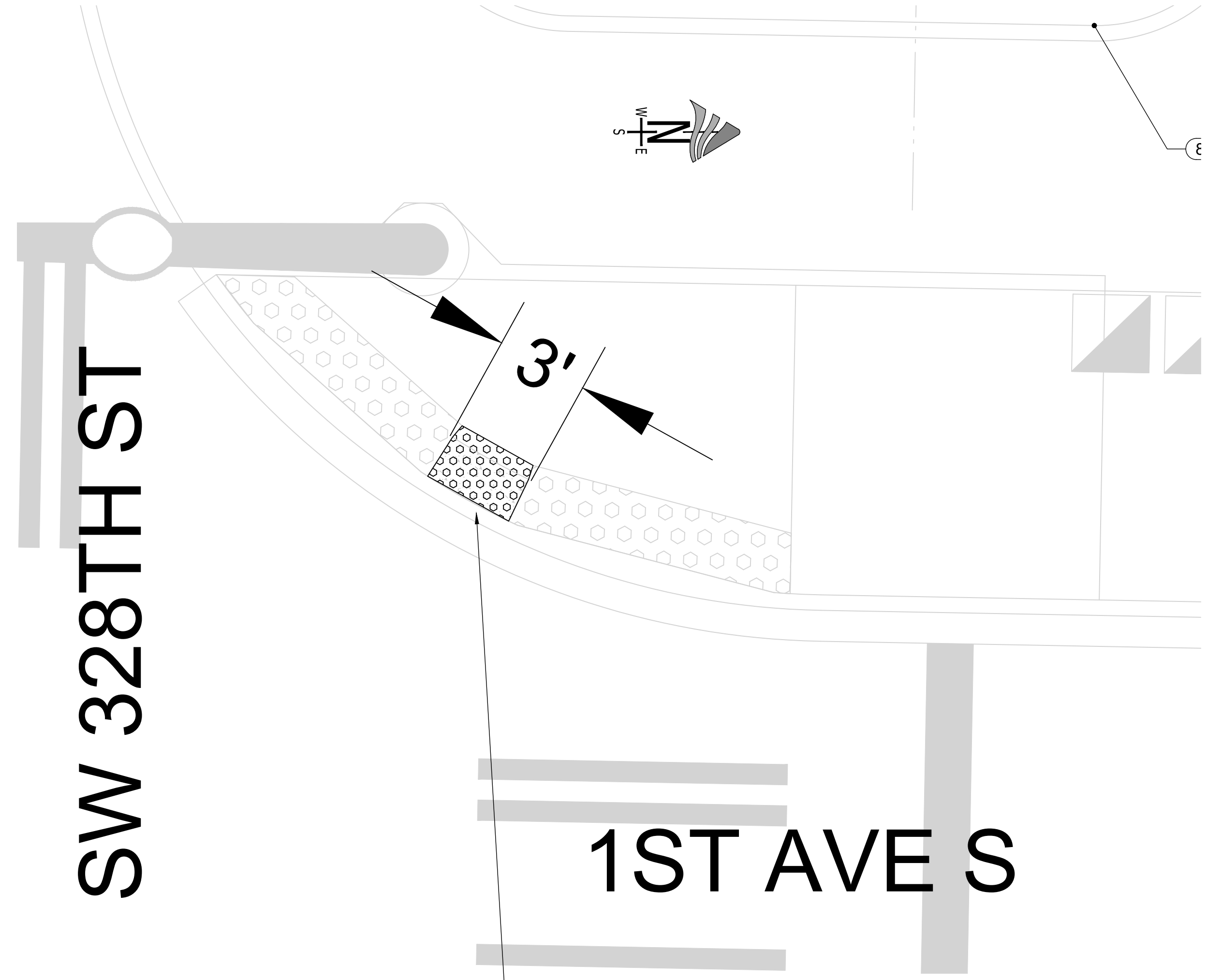
k:\engineering\division\PROJECTS\ACTIVE\36228 - citywide ada retrofits\03 PE\ACAD\Citywide ADA Retrofits A.dwg, 7/13/2023

k:\engineering\division\PROJECTS\ACTIVE\36228 - citywide ada retrofits\03 PE\ACAD\Citywide ADA Retrofits A.dwg, 7/13/2023



REMOVE 1' CONCRETE CURB, INCLUDING REBAR INSETS. GRIND AREA TO MATCH SLOPE AND GRADE OF EXISTING SIDEWALK. PLACE SURFACE APPLIED BLACK DETECTABLE WARNING SURFACE 2' WIDE BETWEEN EXISTING RAMP LANDINGS.

7 EXISTING CURB RAMP  
SCALE: 1"=3'



REMOVE 1' CONCRETE CURB, INCLUDING REBAR INSETS. GRIND AREA TO MATCH SLOPE AND GRADE OF EXISTING SIDEWALK. PLACE SURFACE APPLIED BLACK DETECTABLE WARNING SURFACE 2' WIDE BETWEEN EXISTING RAMP LANDINGS.

8 EXISTING CURB RAMP  
SCALE: 1"=3'

**CURB RAMP NOTES**

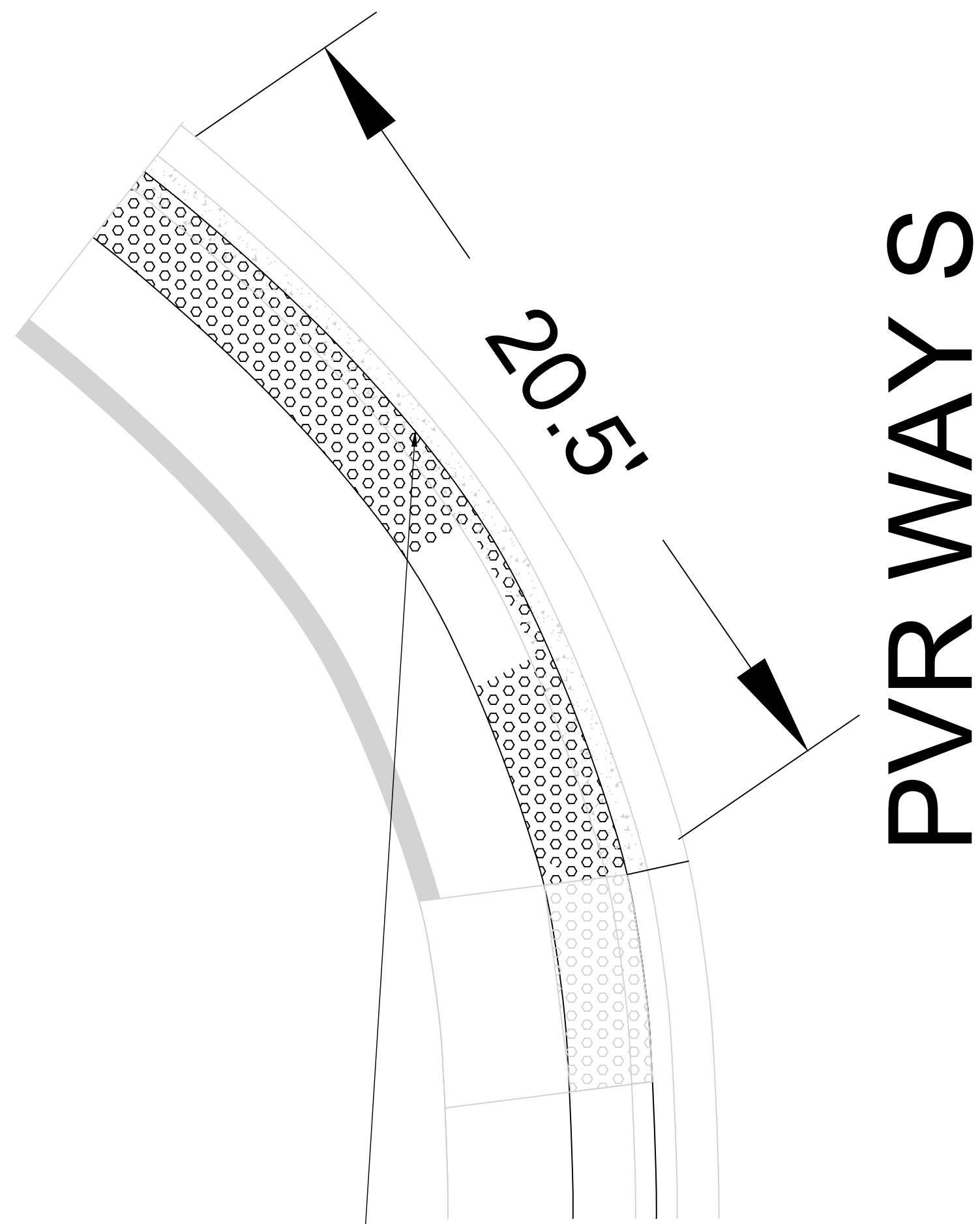
1. DETECTABLE WARNING SURFACE PER WSDOT STD PLAN F-45.10-02.
2. CONCRETE CURB TO BE REMOVED WAS PLACED SEPARATELY FROM CURB WITH COLD JOINT FOR POINT OF REMOVAL.

100% DRAWINGS

DRAWING VERSION / REVISION LOG		
NO.	DATE	REVISION



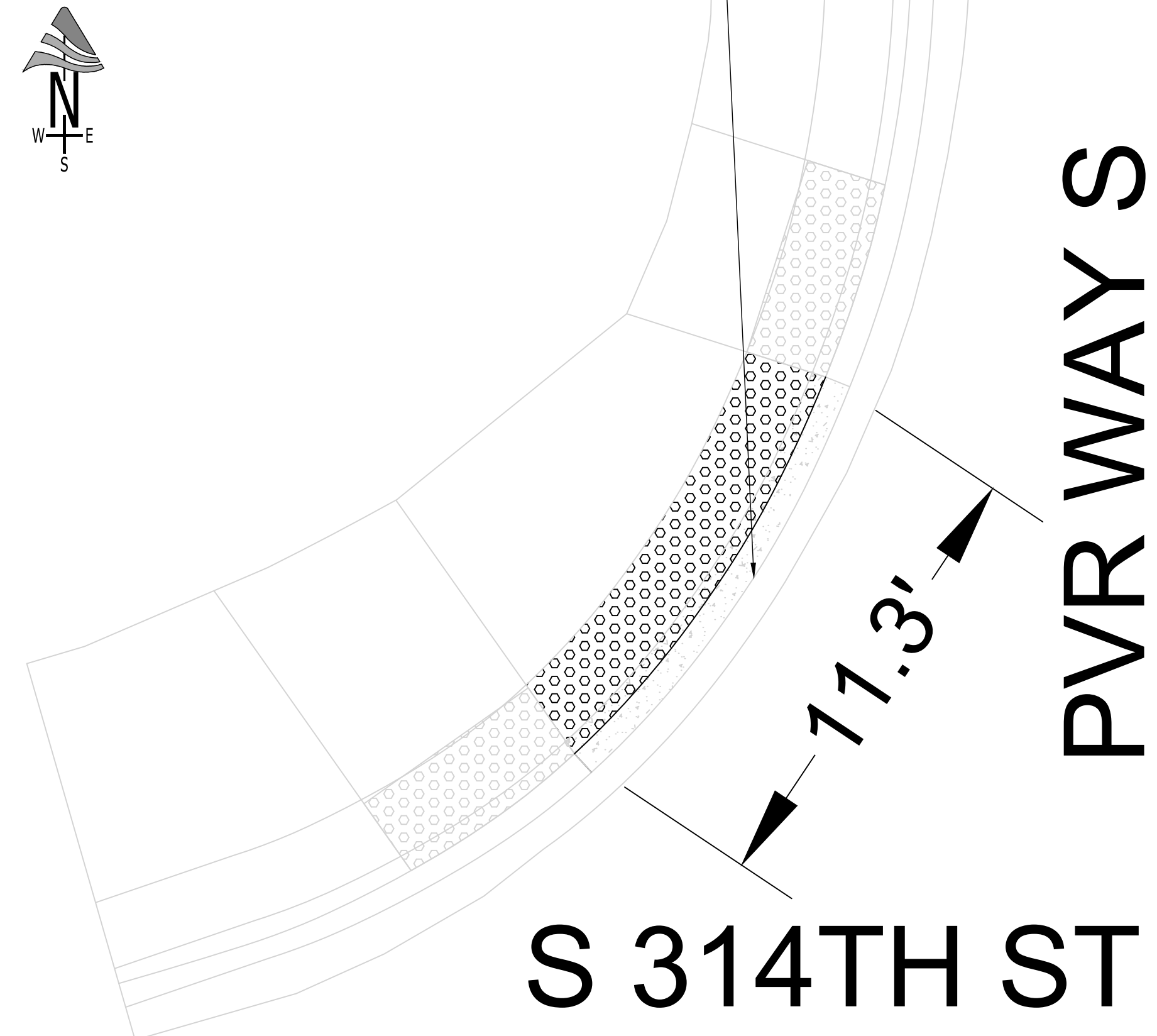
S 316TH ST



REMOVE 1' CONCRETE CURB, INCLUDING REBAR INSETS. GRIND AREA TO MATCH SLOPE AND GRADE OF EXISTING SIDEWALK. PLACE SURFACE APPLIED BLACK DETECTABLE WARNING SURFACE 2' WIDE BETWEEN EXISTING RAMP LANDINGS.

9 EXISTING CURB RAMP  
SCALE: 1"=3'

REMOVE 1' CONCRETE CURB, INCLUDING REBAR INSETS. GRIND AREA TO MATCH SLOPE AND GRADE OF EXISTING SIDEWALK. PLACE SURFACE APPLIED BLACK DETECTABLE WARNING SURFACE 2' WIDE BETWEEN EXISTING RAMP LANDING.



10 EXISTING CURB RAMP  
SCALE: 1"=3'

CURB RAMP NOTES

1. DETECTABLE WARNING SURFACE PER WSDOT STD PLAN F-45.10-02.
2. CONCRETE CURB TO BE REMOVED WAS PLACED SEPARATELY FROM CURB WITH COLD JOINT FOR POINT OF REMOVAL.

100% DRAWINGS

**CITY OF Federal Way**  
Centered on Opportunity  
33325 8TH AVE S FEDERAL WAY, WA 98003  
PHONE: (253) 835-2700  
WWW.CITYOFFEDERALWAY.COM

**811**  
Know what's below.  
Call before you dig.

DRAFTED: J. MULKEY  
DESIGNED: J. MULKEY  
REVIEWED: C. MULLEN  
APPROVED: C. MULLEN

JOHN ROBERT MULKEY  
STATE OF WASHINGTON  
39850  
REGISTERED  
PROFESSIONAL ENGINEER  
July 13, 2023

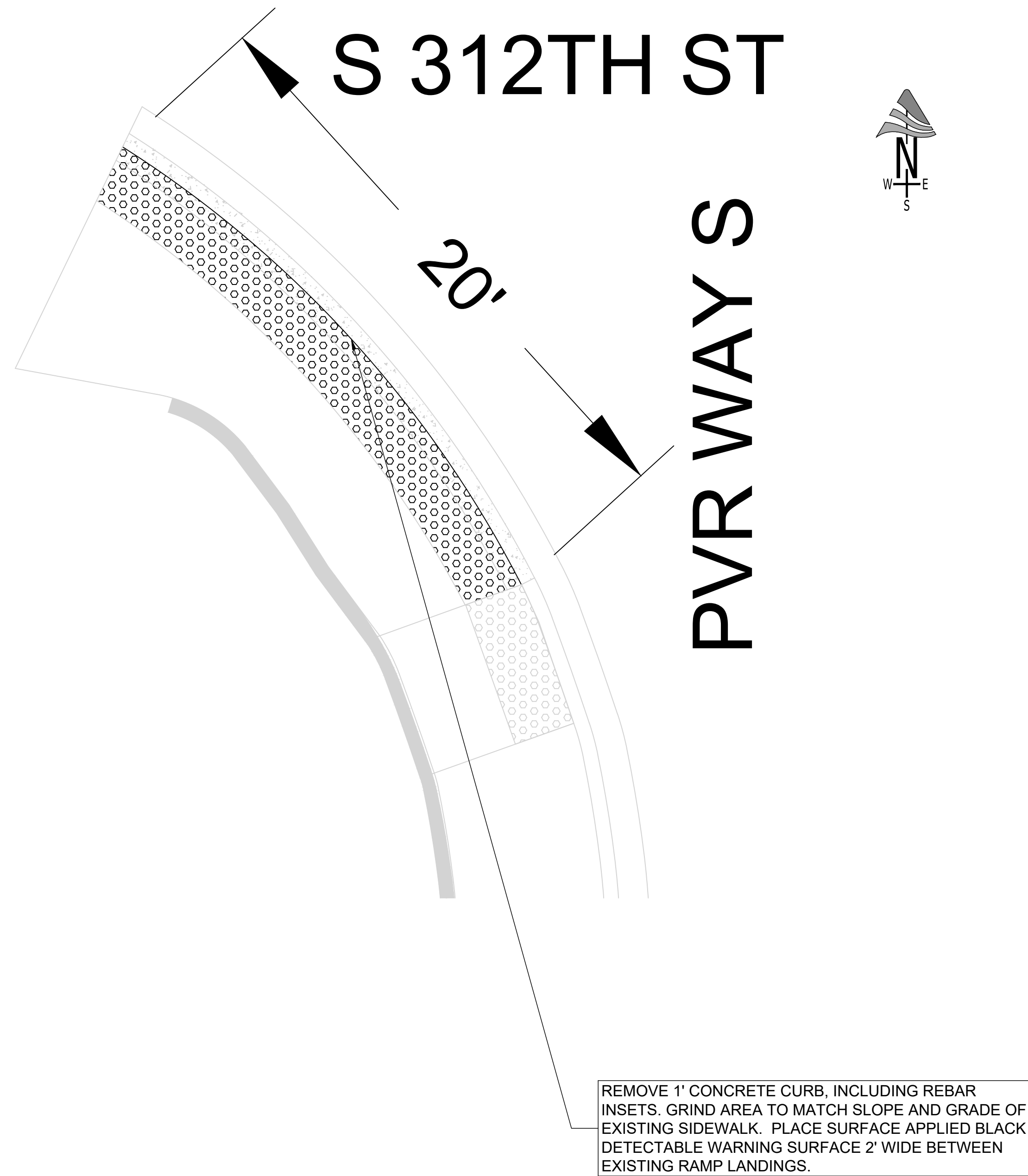
DRAWING VERSION / REVISION LOG		
NO.	DATE	REVISION

**2022 CITYWIDE ADA RETROFITS**

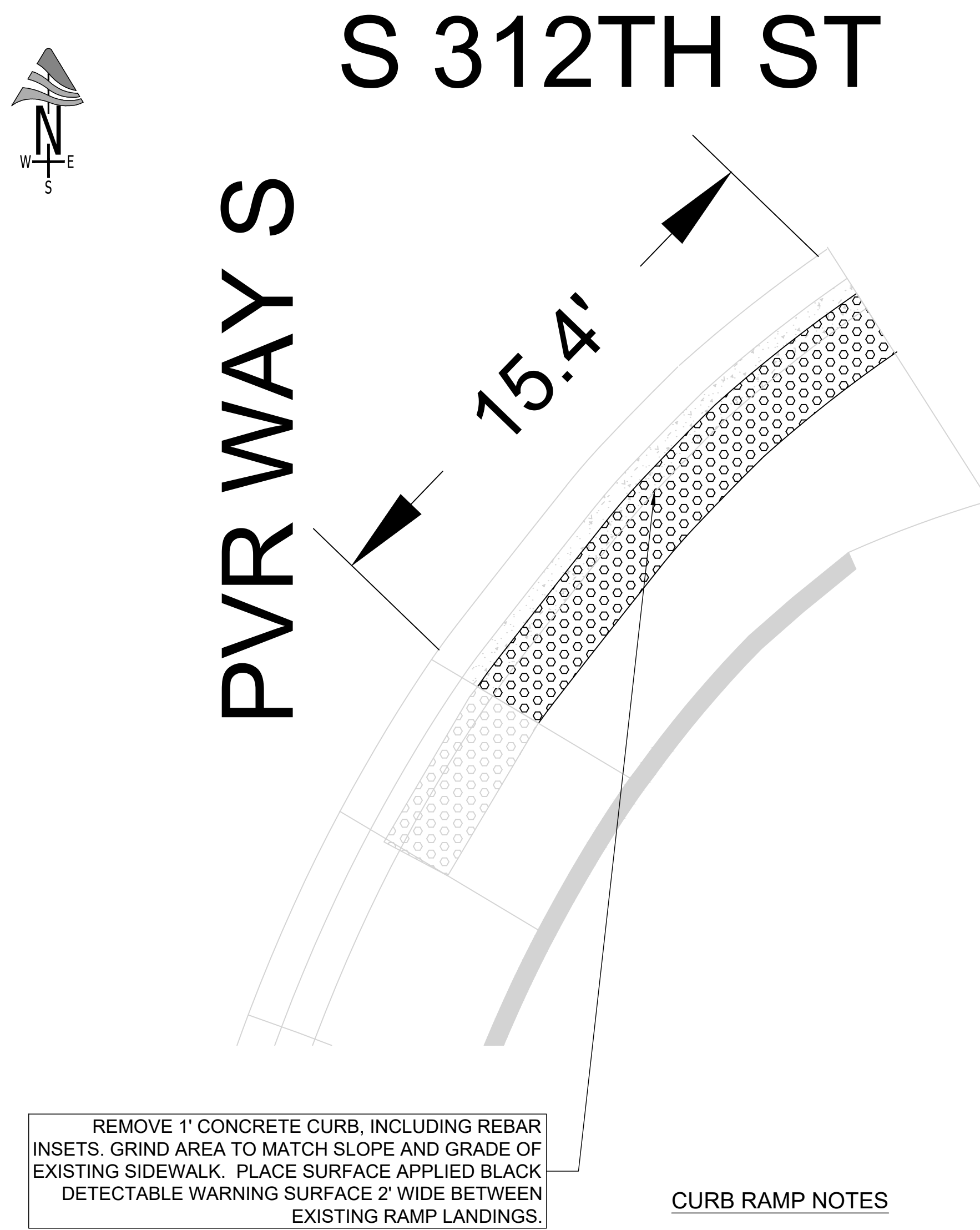
Ramps 9 & 10  
S 314TH ST & PVR WAY S

CITY PROJECT #:	36228
SHEET	07
07 OF 11	

k:\engineering\division\PROJECTS\ACTIVE\36228 - citywide ada retrofits\03 PE\ACAD\Citywide ADA Retrofits A.dwg, 7/13/2023



11 EXISTING CURB RAMP  
SCALE: 1"=3'



12 EXISTING CURB RAMP  
SCALE: 1"=3'

**CURB RAMP NOTES**

1. DETECTABLE WARNING SURFACE PER WSDOT STD PLAN F-45.10-02.
2. CONCRETE CURB TO BE REMOVED WAS PLACED SEPARATELY FROM CURB WITH COLD JOINT FOR POINT OF REMOVAL.

100% DRAWINGS

DRAWING VERSION / REVISION LOG		
NO.	DATE	REVISION

k:\engineering\division\PROJECTS\ACTIVE\36228 - citywide ada retrofits\03 PE\ACAD\Citywide ADA Retrofits A.dwg, 7/13/2023





29.9'

SAWCUT AND REMOVE PAVEMENT 2- FEET FROM BACK CURB EXTEND TO ALLOW ROOM AROUND SIGNAL POLE AS SHOWN. MAINTAIN 4' CLEAR FROM ROADSIDE CURB TO SAWCUT. REPLACE SIDEWALK AFTER COMPLETION OF ELECTRICAL WORK, PER CFW STANDARD DRAWING 3-12..

PACIFIC HWY S

INTERCEPT EXISTING CONDUIT FOR PEDESTRIAN PUSH BUTTONS AND OVSERT NEW TYPE 2 JUNCTION BOX PER WSDOT STANDARD PLAN J-40-10.04 TO BE COMPLETED BY OTHERS.

S 320TH ST

NEW PEDESTRIAN PUSH BUTTON POLES PER WSDOT STANDARD PLAN J-20.10-04 TO BE INSTALLED BY OTHERS.

13 EXISTING CURB RAMP  
SCALE: 1"=3'



PACIFIC HWY S

6.8'

REMOVE 1' CONCRETE CURB, INCLUDING REBAR INSETS. GRIND AREA TO MATCH SLOPE AND GRADE OF EXISTING SIDEWALK. PLACE SURFACE APPLIED BLACK DETECTABLE WARNING SURFACE 2' WIDE BETWEEN EXISTING RAMP LANDINGS.

13.1'

S 320TH ST

CURB RAMP NOTES

- 1. DETECTABLE WARNING SURFACE PER WSDOT STD PLAN F-45.10-02.
- 2. CONCRETE CURB TO BE REMOVED WAS PLACED SEPARATELY FROM CURB WITH COLD JOINT FOR POINT OF REMOVAL.

14 EXISTING CURB RAMP  
SCALE: 1"=3'

100% DRAWINGS

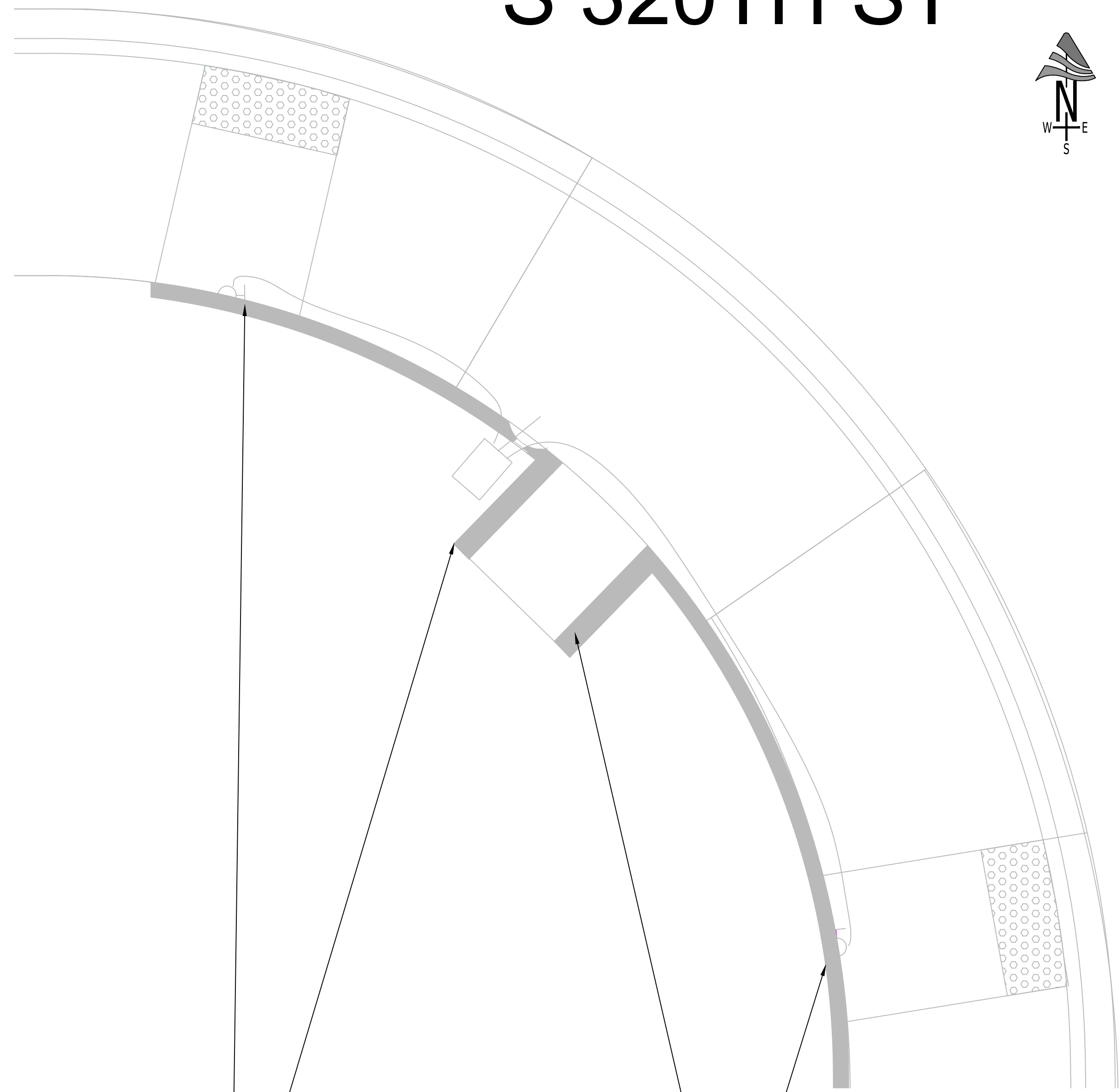
DRAWING VERSION / REVISION LOG

NO.	DATE	REVISION

S 320TH ST



PACIFIC HWY S



PLACE ALUMINUM SKATE DETERRENT PER DETAIL IN SPECIFICATION APPENDIX ON PEDESTRIAN CURB ON 24' CENTERS, ALONG TOP OF CURB EXTENDING INTO THE PLAZA TO DELINEATE CURB FOR BLIND PEDESTRIANS.

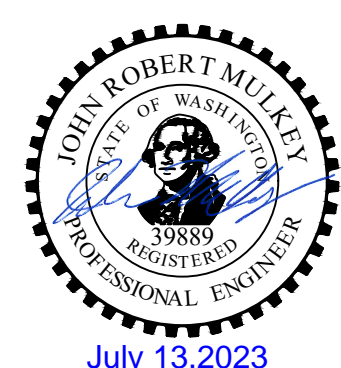
15 EXISTING CURB RAMP  
SCALE: 1"=3'

100% DRAWINGS

**CITY OF Federal Way**  
Centered on Opportunity  
33325 8TH AVE S FEDERAL WAY, WA 98003  
PHONE: (253) 835-2700  
WWW.CITYOFFEDERALWAY.COM



DRAFTED: J MULKEY  
DESIGNED: J MULKEY  
REVIEWED: C.MULLEN  
APPROVED: C.MULLEN



DRAWING VERSION / REVISION LOG		
NO.	DATE	REVISION

2022 CITYWIDE ADA RETROFIT

Ramp 15  
S 320TH ST & PACIFIC HWY S

CITY PROJECT #:	36228
SHEET	10
10 OF 11	

K:\engineering\division\PROJECTS\ACTIVE\36228 - citywide ada retrofits\03 PEACAD\Citywide ADA Retrofits A.dwg, 7/13/2023



ROUND FOUNDATION AND JUNCTION BOX TO REMAIN. CUT 4 BOLTS FLUSH TO SURFACE OF FOUNDATION, REMOVE TAPE TO LEAVE A FLAT SURFACE ON FOUNDATION.

CUT AND CAP ALL IRRIGATION LATERALS FROM LARGE MAIN LARGE VALVE BOX. LARGE VALVE BOX TO REMAIN. REMOVE CIRCULAR VALVE BOX AND SMALLER RECTANGULAR VALVE BOXES AND ASSOCIATED IRRIGATION PIPES.

CLEAR AND GRUB OVERLYING MATERIAL INCLUDING BARK, TOPSOIL, PLANTS, ROOTS AND IRRIGATION TO A DEPTH OF 6-INCHES BELOW TOP OF EXISTING CURB (8-INCH TOTAL DEPTH). REPLACE WITH 2-INCH CSTC AND "CEMENT CONCRETE WITH PEDESTRIAN DETERRENT" PER SP 8-14.3(5)D..

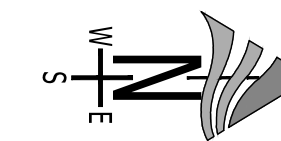
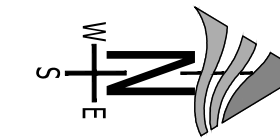
CLEAR AND GRUB OVERLYING MATERIAL INCLUDING BARK, TOPSOIL, PLANTS, ROOTS AND IRRIGATION TO A DEPTH OF 6-INCHES BELOW TOP OF EXISTING CURB (8-INCH TOTAL DEPTH). REPLACE WITH 2-INCH CSTC AND 4" SIDEWALK PER CFW DETAIL 3-3.

CLEAR AND GRUB OVERLYING MATERIAL INCLUDING BARK, TOPSOIL, PLANTS, ROOTS AND IRRIGATION TO A DEPTH OF 6-INCHES BELOW TOP OF EXISTING CURB (8-INCH TOTAL DEPTH). REPLACE WITH 2-INCH CSTC AND "CEMENT CONCRETE WITH PEDESTRIAN DETERRENT" PER SP 8-14.3(5)D.

S 320TH ST

PACIFIC HWY S

S 320TH ST



100% DRAWINGS

DRAWING VERSION / REVISION LOG		
NO.	DATE	REVISION

k:\engineering\division\PROJECTS\ACTIVE\36228 - citywide ada retrofits\03 PE\ACAD\Citywide ADA Retrofits A.dwg, 7/13/2023