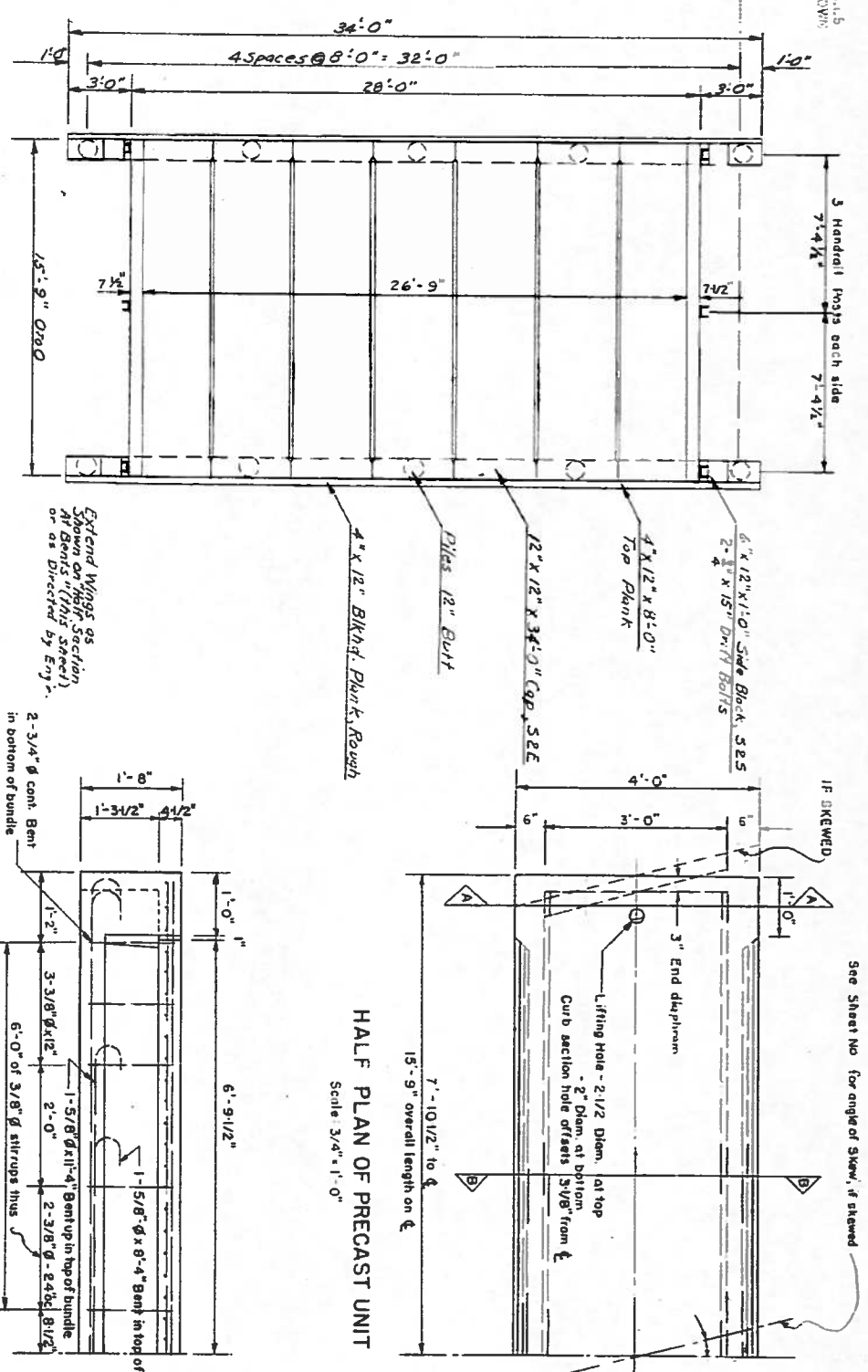
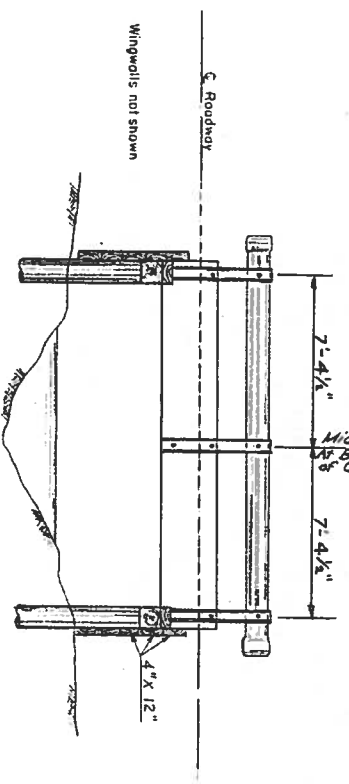


WINGWALLS
NOT SHOWN



PLAN
Scale: 1/2" = 1'-0"

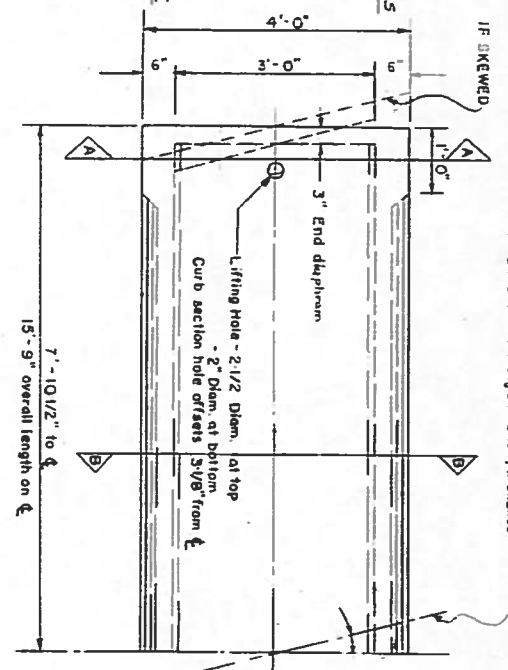
Pile spacing to be modified for skew or less width



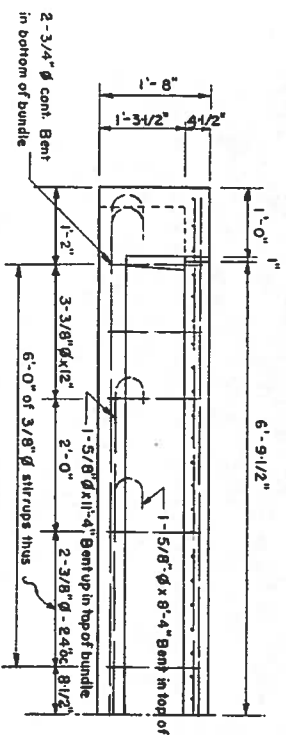
ELEVATION
Scale 1/4" = 1'-0"

GENERAL NOTES
Loading - H-15-44 A.A.S.H.O.
Concrete - 4500 p.s.i., f_c = 1500 p.s.i., n = 8
Steel Reinforcing - Intermediate grade deformed, f_s = 20,000 p.s.i.
Camber - Give pre-cast units 1/4" parabolic camber
Creosoting - All piles and timber except handrails and posts shall be creosoted (see specifications)

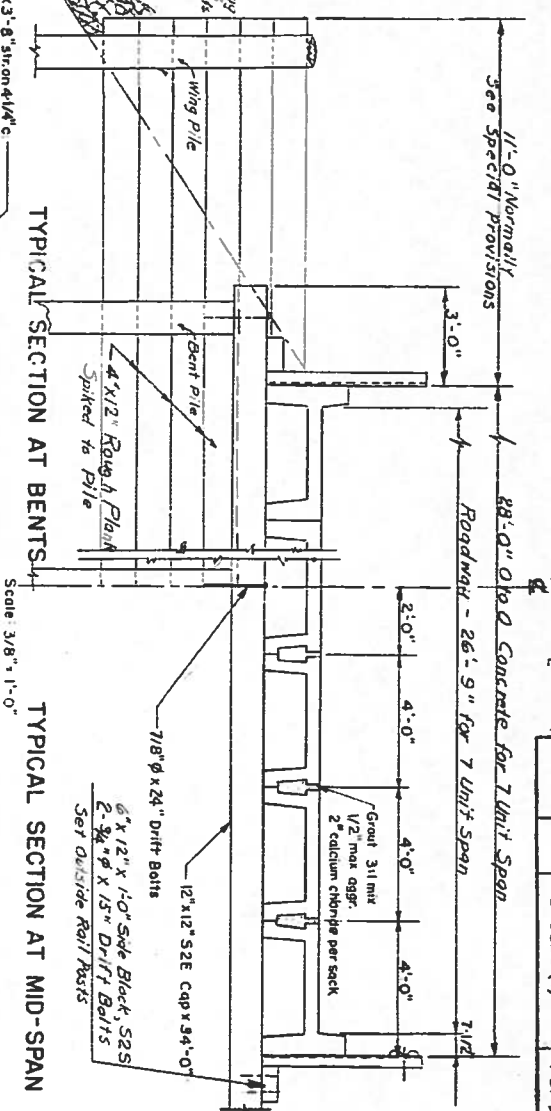
See Sheet No. for angle of skew, if skewed



HALF PLAN OF PRECAST UNIT
Scale 3/4" = 1'-0"

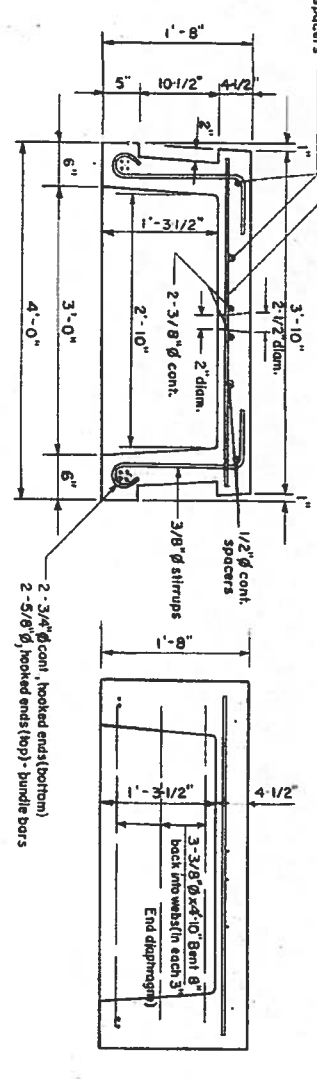


HALF ELEVATION OF PRECAST UNIT
Scale 3/4" = 1'-0"



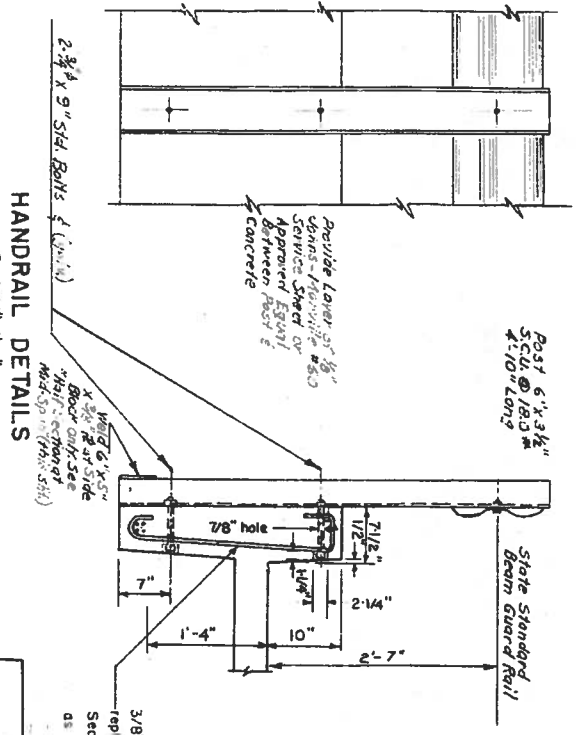
TYPICAL SECTION AT BENTS
Scale 3/8" = 1'-0"

TYPICAL SECTION AT MID-SPAN
Scale 3/8" = 1'-0"



SEC. B-B OF PRECAST UNIT
Scale 1" = 1'-0"

SEC. A-A OF PRECAST UNIT
Scale 1" = 1'-0"



HANDRAIL DETAILS
Scale 1" = 1'-0"

BRIDGE SOOT

3/8" dia. stirrups extended up into curb & 3/4" dia. cont. spacer replace 3/8" dia. stirrups & 1/2" dia. cont. spacer as shown in Sec. B-B above. Otherwise end sections have same steel as shown in section B-B

KING COUNTY ENGINEERING DEPARTMENT
D. L. EVANS, COUNTY ROAD ENGINEER

STANDARD 15'-9" PRECAST CONC. BRIDGE DECK

PLANS, ELEVATIONS
TYPICAL SECTIONS

SHEET NO. 9 OF 9 SHEETS

DESIGN NO.	DATE	110' AND PROJECT NO.	SHEET NO.
5-0850 (1)	9 OF 9		

Conf. 6431 84-944