

60% CD	02-20-18
90% CD	04-19-19
100% CD	07-11-19
CONSTRUCTION	
REVISION 1	08-2-19
REVISION 2	
REVISION 3	
REVISION 4	

COPYRIGHT © 2013 CROSS 2 DESIGN GROUP
 THESE DOCUMENTS, THE IDEAS AND DESIGNS INCORPORATED HEREIN AS AN INSTRUMENT OF SERVICE, ARE THE PROPERTY OF CROSS 2 DESIGN GROUP AND ARE NOT TO BE USED IN WHOLE OR IN PART WITHOUT WRITTEN AUTHORIZATION OF CROSS 2 DESIGN GROUP.

DESIGN	RBC
DRAWN	RBC
CHECK	MLG

E1.1	
PLOT DATE	Aug. 2, 19

PLAN NOTES

- 1 PROVIDE NEW HID MINIPROX 5365 125KHZ MULLION MOUNT PROXIMITY CARD READER, BEST ACCESS - 4 SERIES CENTERLINE STRIKE, POWER SUPPLY, CONTROLLER, CONTROL CABLE, AND ALL LICENSE FEES. CONNECT TO EXISTING SECURITY SYSTEM. PROVIDE ALL APPURTENANCES FOR COMPLETE OPERATIONAL SYSTEM. FIELD VERIFY LOCATION OF HEADEND EQUIPMENT.
- 2 REPLACE EXISTING LIGHT FIXTURE. EXTEND EXISTING LIGHTING CIRCUIT AS REQUIRED.
- 3 EXISTING HVAC UNIT TO REMAIN.
- 4 EXISTING RECEPTACLE TO REMAIN.
- 5 EXISTING DATA DROP OUTLET TO REMAIN.
- 6 REPLACE EXISTING LIGHT SWITCH WITH NEW LINE VOLTAGE OCCUPANCY LIGHT SWITCH. CONNECT TO LIGHT FIXTURES IN ROOM FOR COMPLETE OPERATION. UTILIZE EXISTING WIRING IF POSSIBLE.
- 7 PROVIDE CONDUIT, CONDUCTORS, DISCONNECT AND ALL APPURTENANCES FOR COMPLETE OPERATION OF VAV BOX. PANEL 2HN IN ELECTRICAL ROOM ADJACENT TO CONF RM. 2114. APPROXIMATELY 150 FT FROM ROOM. COORDINATE WITH MECHANICAL FOR EXACT LOCATION.

GENERAL NOTES

1. CONTRACTOR TO FIELD VERIFY EXISTING CIRCUITS AND ROUTING FOR NEW LOAD.
2. COORDINATE ALL INSTALLATIONS WITH OTHER TRADES AND EXISTING DEVICES PRIOR TO ROUGH-IN.
3. FLUORESCENT FIXTURES TO BE REPLACED WITH NEW LED FIXTURES. NO NEW ELECTRICAL LOAD ADDED TO EXISTING LIGHTING CIRCUIT.
4. PAINT, PATCH, AND SEAL ALL PENETRATIONS AS REQUIRED.
5. PROVIDE ALL REQUIRED APPURTENANCES, PROGRAMMING, J-BOXES, RACEWAY/CONDUIT, CABLING, MOUNTING HARDWARE AS REQUIRED FOR COMPLETE OPERATION.
6. PROVIDE COMPLETE WORK FOR REQUIREMENTS AS DESCRIBED ON LEGEND.
7. PROVIDE ALL MATERIAL AND LABOR RELATED TO THE INSTALLATION OF ELECTRICAL DEVICES PENETRATING INTO OR THROUGH FIRE RATED WALLS, FLOORS, OR CEILINGS SUCH THAT THE FIRE RATING OF THE WALL IS MAINTAINED.
8. DO NOT TAKE MEASUREMENTS FROM PLANS FOR DEVICE LOCATIONS. FIELD VERIFY EXACT DEVICE, EQUIPMENT LOCATIONS, AND MOUNTING HEIGHTS WITH OWNER'S REPRESENTATIVE FOR PROPER INSTALLATION.
9. BRANCH CIRCUIT HOME RUNS ARE NOT INDICATED WITH NUMBER OF CONDUCTORS/ WIRES. PROVIDE ALL BRANCH CIRCUIT CONDUCTORS/ WIRES AS REQUIRED FOR COMPLETE OPERATION OF ALL DEVICES AND EQUIPMENT INDICATED. PROVIDE INDIVIDUAL NEUTRALS FOR EACH CIRCUIT.
10. REFER TO EQUIPMENT SCHEDULES FOR WIRING REQUIREMENTS NOT INDICATED ON POWER PLANS.
11. INCLUDE COST OF PROVIDING ALL ELECTRICAL CONNECTIONS AS REQUIRED FOR FULL OPERATION OF ALL OWNER FURNISHED, CONTRACTOR INSTALLED EQUIPMENT. SEE ARCHITECTURAL DRAWINGS TO VERIFY LOCATIONS.
12. VERIFY ALL LIGHT FIXTURE TYPES, VOLTAGE, AND MOUNTING METHODS TO SUIT BUILDING STRUCTURE, CEILING SYSTEM, TRUSS, JOISTS, AND SUPPORTING SURFACES. ALL FIXTURE MOUNTING HEIGHTS SHALL BE APPROVED OR AS DIRECTED BY THE OWNER'S REPRESENTATIVE. VERIFY CORRECT CATALOG NUMBERS PRIOR TO ORDERING OF FIXTURES. REFER TO CONTRACT DRAWINGS FOR LOCATIONS OF EMERGENCY FIXTURES.
13. PROVIDE SEPARATE NEUTRALS FOR ALL BRANCH CIRCUITS.
14. WIRING SYSTEMS SHALL BE CONCEALED WHERE POSSIBLE, EXCEPT IN ELECTRICAL ROOM, MECHANICAL ROOM, AND UTILITY AREAS, OR AS OTHERWISE NOTED.
15. PROVIDE SURFACE METAL RACEWAY AS WIRING METHOD WHERE OUTLETS AND WIRING CANNOT BE CONCEALED.
16. EXTERIOR MOUNTED ELECTRICAL DEVICES (SUCH AS DISCONNECT SWITCH, STARTER, SPEAKER, FIRE ALARM HORN, ETC.) AND COVERS SHALL BE NEMA-3R WEATHERPROOF RATED.
17. PROVIDE TEMPORARY POWER FOR CONSTRUCTION. TEMPORARY POWER MAY BE IN THE FORM OF PORTABLE GENERATOR SET, CONNECTION TO UTILITIES COMPANY'S POWER POLE OR EXISTING FACILITY'S ELECTRICAL SYSTEM.
18. DO NOT INSTALL FLUSH WALL OUTLETS BACK TO BACK. A MINIMUM OF 24" SEPARATION IS REQUIRED BETWEEN ANY OUTLET INSTALLED ON FIRE RATED WALL.
19. CONDUIT OR OTHER ELECTRICAL COMPONENTS SHALL NOT BE INSTALLED IN STRUCTURAL CONCRETE UNLESS SPECIFICALLY INDICATED ON THE DRAWINGS OR APPROVED BY STRUCTURAL ENGINEER.

INTERIOR LIGHT FIXTURE SCHEDULE									
TYPE	DESCRIPTION	MANUFACTURER		LIGHT SOURCE				INPUT WATTS	NOTES
		NAME	CATALOG NUMBER	QTY.	TYPE	* / LUMENS	CCT (K)		
L1	2' X 4' RECESSED LED FIXTURE	FINE LITE HIGH PERFORMANCE RECESSED 2X4	HPR LED - A - DCO - S - 835- 277V	INC.	LED	3772	3500	27	COORDINATE WITH ARCHITECT FOR CEILING TYPE.

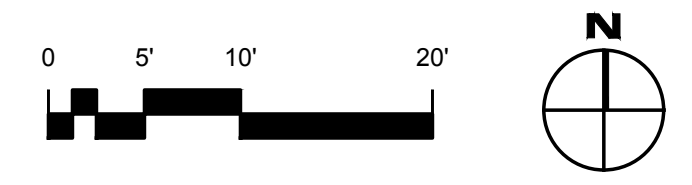
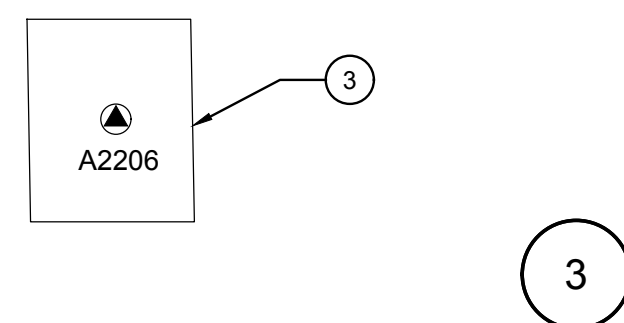
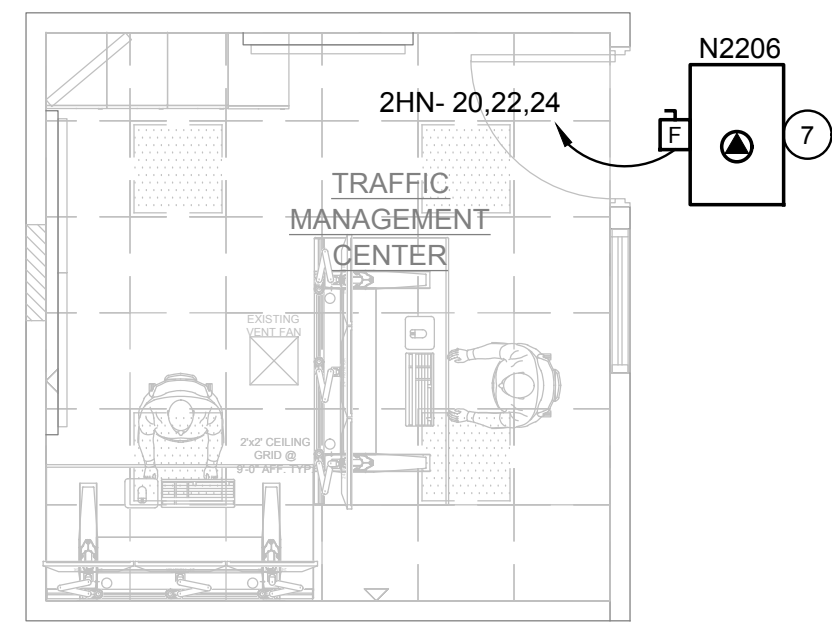
NOTES: * DL = DELIVERED LUMENS, IL = INITIAL LUMENS, UNV = UNIVERSAL VOLTAGE, EM = EMERGENCY
 ANY FIXTURE SHOWN ON PLANS ENDING IN "E" DESIGNATION WITH SYMBOL HATCHING DENOTES EMERGENCY FIXTURE. EMERGENCY FIXTURE ROUTED VIA EPS SOLUTION.
 COLOR FINISHES SHALL BE COORDINATED WITH OWNER/ARCHITECT PRIOR TO ORDERING OF FIXTURES.
 REFER TO PLANS FOR MOUNTING NOT LISTED. COORDINATE WITH CONTRACT DOCUMENTS.
 MUST BE BUY AMERICA 49 CFR PART 661 COMPLIANT

ELECTRICAL SCHEDULE FOR MECHANICAL EQUIPMENT									
MECHANICAL UNIT NO.	VOLTS/PHASE	LOAD (A/W/HP)	MCA (A)	DISCONNECT		CONDUIT	WIRE	CFM	NOTES
				FRAME (A)	FUSE (A)				
VAV TERMINAL BOX									
N2206	480/3	ELECTRIC HEAT: 480V, 3PH, 4KW MOTOR: 277V, 1PH, 1/3HP	-	30	15	3/4"	4#12, 1#12G	-	1

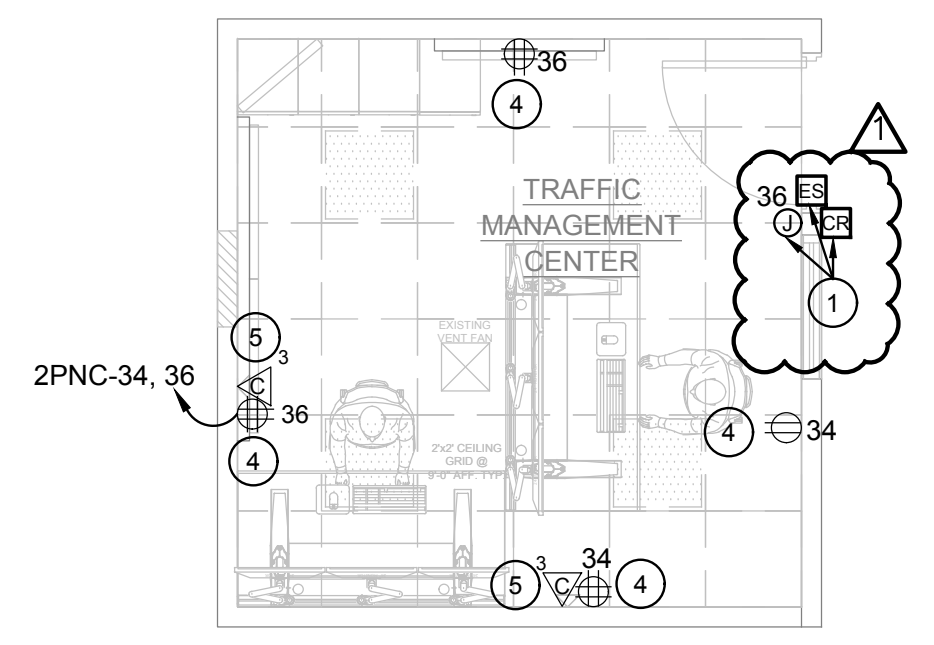
NOTES: 1) UNIT REQUIRES SINGLE POINT OF CONNECTION. SEE NOTES IN PANEL SCHEDULE 2HN FOR CIRCUITING REQUIREMENTS.

ELECTRICAL LEGEND	
SYMBOL	DESCRIPTION
	POWER PANEL
	EXISTING DEVICES
	DUPLEX RECEPTACLE
	EXISTING CONDUIT
	CONDUIT CONCEALED IN WALL OR CEILING SPACE ONLY
	BRANCH CIRCUIT HOME RUN
	SECURITY SYSTEM CARD READER
	TELECOMMUNICATIONS OUTLET, SUBNUMBER=QUANTITY OF DROPS
	LIGHT FIXTURE, SEE SCHEDULE FOR TYPE
	SINGLE POLE SWITCH
	LOW VOLTAGE SWITCH
	WALL MOUNT OCCUPANCY SENSOR SWITCH
	FUSED DISCONNECT SWITCH, SWITCH RATING (60AS) AND FUSE SIZE (50AF) AS SHOWN (3-POLE, UNO)
	TYPICAL LIGHTING FIXTURE DESIGNATION, SEE SCHEDULE FOR TYPE

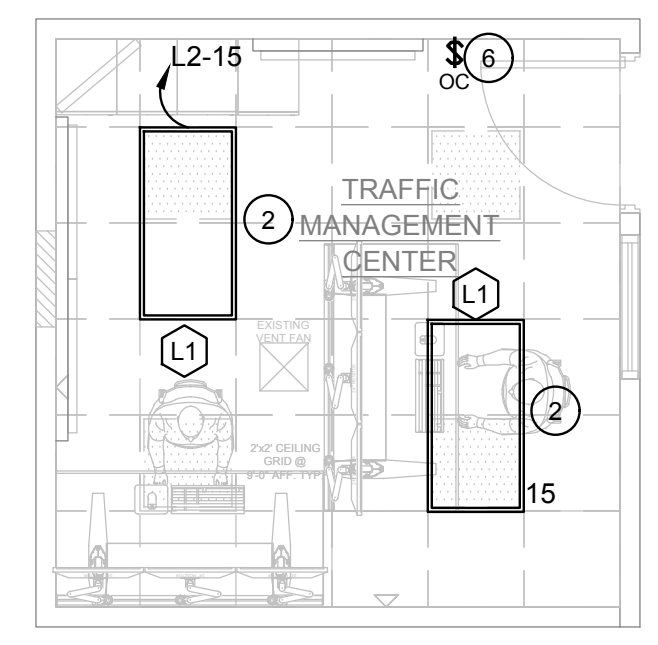
FEDERALWAY TRAFFIC CONTROL CENTER - ELECTRICAL PLAN	
SHEET NO.	SHEET TITLE
E1.1	ELECTRICAL FLOOR PLAN
E2.0	ELECTRICAL ONE LINE DIAGRAM
E2.1	ELECTRICAL PANEL SCHEDULES



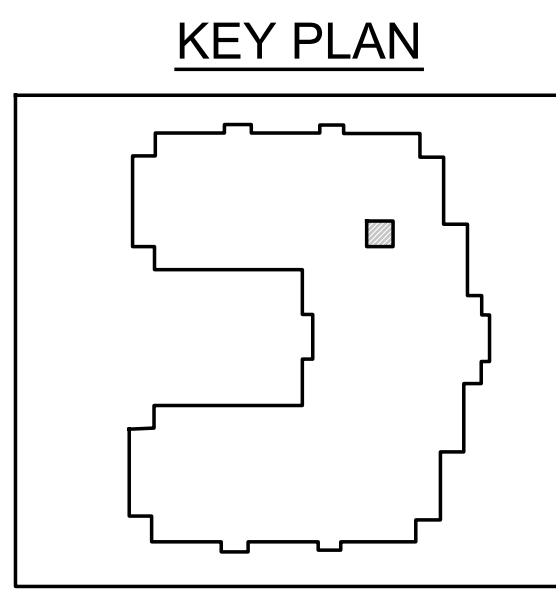
ELECTRICAL HVAC 2ND FLOOR PLAN
1/4" = 1'-0"



ELECTRICAL POWER AND SYSTEMS FLOOR PLAN
1/4" = 1'-0"



ELECTRICAL LIGHTING 2ND FLOOR PLAN
1/4" = 1'-0"



THIS DRAWING WAS PRODUCED FROM ORIGINAL AS-BUILT DRAWINGS AND FIELD OBSERVATIONS, AND MAY NOT REPRESENT AN ACCURATE AS-BUILT CONDITION. DISCREPANCIES MAY BE ENCOUNTERED, AND IT IS THE CONTRACTOR'S RESPONSIBILITY TO FIELD VERIFY ALL CONDITIONS.