

## About the Arts Commission

Established in 1991, the City of Federal Way Arts Commission is a nine member volunteer commission that advises and recommends to the Federal Way City Council activities related to all aspects of the arts — visual, performing, literary and cultural.

**Contact: City of Federal Way Arts Commission**

876 S. 333rd st.  
Federal Way, Washington 98003

253.835.6928  
[www.cityoffederalway.com/artscommission](http://www.cityoffederalway.com/artscommission)

Individuals may enter a total of two pieces of artwork for this exhibition. There is a \$5 entry fee per piece of art. Complete and attach the Entry Form to the back of each artwork. Please do not separate the "Artwork Copy" from the "Artists Receipt."

**CITY OF FEDERAL WAY ARTS COMMISSION**

**ARTWORK COPY ENTRY FORM**

NO. \_\_\_\_ of \_\_\_\_ piece(s)

Name: \_\_\_\_\_

Address: \_\_\_\_\_

City: \_\_\_\_\_

State Zip: \_\_\_\_\_

Email: \_\_\_\_\_

Title of Entry: \_\_\_\_\_

Medium: \_\_\_\_\_

Value of Piece: \_\_\_\_\_

**OFFICE USE ONLY**

Accepted  Not Accepted

**CITY OF FEDERAL WAY ARTS COMMISSION**

**ARTIST RECEIPT ENTRY FORM**

Artist Name: \_\_\_\_\_

Medium: \_\_\_\_\_

Title of Entry: \_\_\_\_\_

**CITY OF FEDERAL WAY ARTS COMMISSION**

**ARTWORK COPY ENTRY FORM**

NO. \_\_\_\_ of \_\_\_\_ piece(s)

Name: \_\_\_\_\_

Address: \_\_\_\_\_

City: \_\_\_\_\_

State Zip: \_\_\_\_\_

Email: \_\_\_\_\_

Title of Entry: \_\_\_\_\_

Medium: \_\_\_\_\_

Value of Piece: \_\_\_\_\_

**OFFICE USE ONLY**

Accepted  Not Accepted

**CITY OF FEDERAL WAY ARTS COMMISSION**

**ARTIST RECEIPT ENTRY FORM**

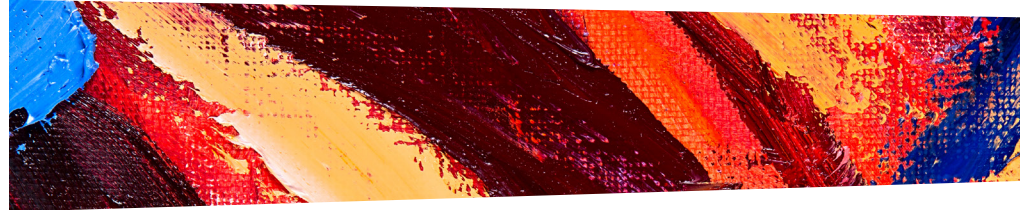
Artist Name: \_\_\_\_\_

Medium: \_\_\_\_\_

Title of Entry: \_\_\_\_\_



# ARTS Alive



## CALL FOR ARTISTS

**THURSDAY, SEPTEMBER 10 2024**



CITY OF  
**Federal Way**  
Arts Commission



## About The Show

The Arts Alive Juried Art Exhibition is a program designed to give regional artists an opportunity to display their works in a public setting. Artists working with a wide range of media are encouraged to participate. This exhibition is professionally judged.

## Exhibition Calendar

**Thursday, September 10th** — Entries accepted at the PAEC from 3:00pm–5:00pm

**Friday, September 11th** — Arts Alive Exhibition on display in the PAEC, open for public viewing during office hours. Go to [fwpaec.org](http://fwpaec.org) for hours.

**Tuesday, October 15th** — Award Reception honoring artists at City Council.

**Thursday, January 9th** — Pick up artwork at the PAEC between 4:00pm–5:00pm.

## Exhibition Awards

### » Juror's Choice

The Juror's Choice award recipient will receive a \$200 cash award and a one-person exhibition at the PAEC.

### » Commission's Choice

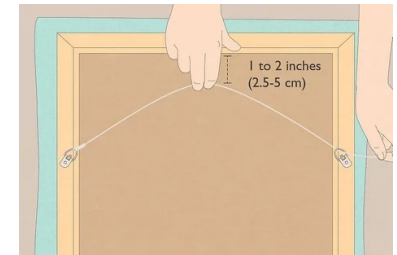
The Commission's Choice winner will receive a \$150 cash award.

### » People's Choice

The People's Choice winner will receive a \$100 cash award.

## Exhibition Information & Criteria

1. Each artist may submit two entries. All media will be considered with the exception of video and wearable art. There is a \$5 entry fee per piece of art. Checks are payable to the City of Federal Way.
2. All must be original work, not completed under an instructor's guidance.
3. **PLEASE REVIEW THE DIAGRAMS BELOW.** Paintings and two-dimensional work must be suitably wired for hanging. (D-ring recommended) as we use a hook and cable system. **No sawtooth hangers. Please check that your work does not tip out significantly from the wall when hung.** All flat artwork may not exceed 36" by 30", including frame. The acceptance of artwork is at the discretion of the City of Federal Way Arts Commission. No three-dimensional artwork will be accepted at this time.



4. All paint and varnish must be dry.
5. Entry blanks must be filled out in full and attached to the back of the artwork.
6. Work selected for the competition must remain in the exhibition until it closes.
7. Artists are responsible for transportation of artwork to and from the Performing Arts & Events Center.
8. Every precaution will be taken to see that no damage or theft occurs to the entries. Each artist will be required to sign a Loaned Art Agreement with the City of Federal Way before the artwork is accepted. Artist's submission of any piece implies acceptance and terms of the agreement.

## Performing Arts & Events Center

Conveniently located across from the Federal Way Transit Center and a short drive's distance from SeaTac Airport, our premier arts, and events venue offers easy accessibility and spacious facilities to suit a diverse range of celebrations and social events. The Federal Way Performing Arts & Event Center represents a new caliber of event space in South King County. Sweeping views of Mt. Rainier and a diverse community are just a couple of the inspirations.

31510 Pete von Reichbauer Way S Federal Way, WA 98003.

Hours: are Monday–Friday 10 AM – 2 PM.